

Product Performance Report

CARDIAC RHYTHM MANAGEMENT
SECOND EDITION 2025

Contents

Table of Contents	2
1 MicroPort CRM commitment to Quality	6
2 Definitions and methods	7
2.1 General definitions	7
2.2 Pulse Generator Malfunctions	8
2.3 Lead reporting data	8
2.3.1 Acute and chronic lead complications reporting	8
2.3.2 Mechanical Lead malfunctions (Returned Leads)	9
2.4 Survival graphs	10
3 Cardiac Resynchronization Therapy (CRT)	13
3.1 Cardiac Resynchronization Therapy Defibrillators (CRT-D)	13
3.1.1 GALI	13
3.1.2 Intensia CRT-D	13
3.1.3 Ovatio CRT 6750	14
3.1.4 Paradym CRT-D 8750	14
3.1.5 Paradym SonR CRT-D 8770 - SonR TriV 8970	15
3.1.6 Paradym RF CRT-D 9750	15
3.1.7 Paradym RF SonR CRT-D 9770	16
3.1.8 Paradym 2 CRT-D 8752 - SonR CRT-D 8772	16
3.1.9 Platinum CRT-D	17
3.1.10 Cardiac Resynchronization Therapy Defibrillators (CRT-D) synopsis	18
3.2 Cardiac Resynchronization Therapy Pacemakers (CRT-P)	19
3.2.1 Reply CRT-P	19
3.2.2 Cardiac Resynchronization Therapy Pacemakers (CRT-P) synopsis	20
3.3 Cardiac Resynchronization Therapy leads	21
3.3.1 Celerity 2D - 3D - Pilot	21
3.3.2 Navigo	21
3.3.3 Situs OTW BW28D - OTW BW28D MV	22
3.3.4 SonRtip	23

3.3.5	Cardiac Resynchronization Therapy leads synopsis	24
4	Tachycardia therapy	25
4.1	Implantable Cardioverter Defibrillators (ICDs)	25
4.1.1	EDIS	25
4.1.2	Intensia DR 154 - VR 124	25
4.1.3	Ovatio DR 6550	26
4.1.4	Ovatio VR 6250	26
4.1.5	Paradym DR 8550	27
4.1.6	Paradym VR 8250	27
4.1.7	Paradym 2 DR 8552 - VR 8252	28
4.1.8	Paradym RF DR 9550	28
4.1.9	Paradym RF VR 9250	29
4.1.10	Platinum DR 1510/1540 - VR 1210/1240	29
4.1.11	TALENTIA DR - VR	30
4.1.12	ULYS	30
4.1.13	Implantable Cardioverter Defibrillators (ICDs) synopsis	31
4.2	Defibrillation leads	33
4.2.1	Isoline	33
4.2.2	Invicta	34
4.2.3	Vigila 1CR - 1CT - 2CR - 2CT	34
4.2.4	Volta 1CR - 1CT - 2CR - 2CT	34
4.2.5	Defibrillation leads synopsis	35
5	Bradycardia therapy	36
5.1	Pacemakers	36
5.1.1	ALIZEA	36
5.1.2	BOREA	36
5.1.3	ENO	37
5.1.4	Esprit	37
5.1.5	Kora 100	38
5.1.6	Kora 250	38
5.1.7	NewLiving	39
5.1.8	OTO	39

5.1.9	Reply D - VDR - Facil DR	40
5.1.10	Reply SR	40
5.1.11	Reply DR	41
5.1.12	Reply 200	41
5.1.13	TEO	42
5.1.14	Pacemakers synopsis	43
5.2	Pacing leads	45
5.2.1	Beflex	45
5.2.2	Petite	46
5.2.3	PY2	47
5.2.4	Screwvine	48
5.2.5	Tilda JT - R - T	48
5.2.6	Vega	49
5.2.7	XFine JX24D - JX25D	50
5.2.8	XFine TX25D - TX26D	51
5.2.9	Pacing leads synopsis	52
6	Field Safety Notices and product advisories	53
6.1	Cardioverter defibrillators	53
6.1.1	Paradym DR, Paradym CRT-D and Paradym CRT-D SonR	53
6.1.2	Paradym ICDs and PhD feature	54
6.1.3	Paradym CRT-D Patient Booklets in US and Canada	55
6.1.4	Ovatio, Paradym, Paradym RF, Paradym 2 and Intensia – Undetectable battery depletion in the event of recurrent shock capacitor charging	56
6.1.5	Platinum – 30Hz pacing and inductive telemetry	60
6.1.6	Platinum – Overconsumption following ElectroStatic Discharge or MRI scan	61
6.1.7	Platinum – Risk of intermittent contact in the DF4 connectors	63
6.1.8	Platinum – Loss of pacing and sensing following hardware failure, leading to absence of automatic detection of an arrhythmia requiring defibrillation shock therapy	64
6.1.9	Platinum – Release of a new software version to maintain therapies in implanted Platinum devices in case of occurrence of the hardware failure described in the Field Safety Notice issued in July 2018	68
6.2	Pacemakers	70
6.2.1	Programmer software version associated with Reply SR	70

6.2.2	Additional information on lead connections to Reply pacemakers	71
6.2.3	European programmer software version 2.24 and Reply / Esprit pacemakers	72
6.2.4	Overestimation of the residual longevity displayed by the programmer - Reply / Esprit / Facil pacemakers	73
6.2.5	Improved residual longevity displayed by the programmer – Reply pacemakers	75
6.2.6	ENO, TEO, OTO and KORA 250: Risk of abnormally short device lifetime	79
6.3	Leads	81
6.3.1	Isoline 2CR6 defibrillation leads - incorrect Use Before Date	81
6.3.2	Isoline defibrillation leads, models 2CR5, 2CR6 and 2CT6 - internal insulation breach	81
6.3.3	SonRtip endocardial pacing leads - Lead handling	84
6.3.4	XFine passive pacing leads - Risk of Minute Ventilation artefact oversensing	85
7	Retired Products	88

1 MicroPort CRM commitment to Quality

At MicroPort CRM, we are committed to constantly delivering innovative medical devices and services that meet customer expectations and are safe, effective and compliant with quality standards and regulations.

Translating innovation into clinically meaningful technology, our CRM systems are imagined, designed and built to improve health and save lives.

Across the globe, MicroPort CRM strives to ensure the highest levels of performance and quality throughout the entire product life cycle, and to provide timely and reliable information on device performance to physicians and patients.

This Second Edition of 2025 of MicroPort CRM's Product Performance Report embodies our commitment to update the product performance information regularly and communicate it to physicians and patients. Our performance report is published online semi-annually at www.crm.microport.com. This new edition includes performance data collected up to June 30, 2025 and incorporates the latest information about the company's most recent leads and pulse generators (pacemakers, ICDs (Implantable Cardioverter Defibrillators), CRT devices (Cardiac Resynchronization Therapy)), as well as the most recent updates about product advisories.

As a company, we believe that every patient is important and should be treated equally, and we aim for full transparency with our physicians and patients. Because our products are globally marketed, with the majority of patients outside the United States, the MicroPort CRM division provides worldwide data in its Product Performance Report to ensure that patients, physicians and regulators are better and sooner informed.

We continually seek your input to help us enhance our product performance, and we encourage you to provide your comments and suggestions to your local representative. We also urge you to inform your local representative immediately about any indication of potential problem with our devices. Your contributions play a key role in communicating accurate and vital product performance information.

We thank you for your support.



Valerie CENTIS

Vice President of Regulatory and Quality Affairs

2 Definitions and methods

2.1 General definitions

This Second Edition of 2025 of MicroPort CRM's Product Performance Report was prepared in accordance with ISO 5841-2¹, an international standard for reporting the clinical performance of populations of pulse generators or leads. The third edition of this ISO standard was published in 2014; as part of the revision process, the recommendations from the May 2009 AdvaMed² Industry Guidance for Uniform Reporting of Clinical Performance of Cardiac Rhythm Management Pulse Generators and Leads³ have been incorporated.

Cumulative survival probability is calculated using the standard actuarial method with confidence intervals using Greenwood's method. **Cumulative survival probability** is the estimated probability of a unit's surviving from the time of implant to the end of a given interval without **device malfunction**. This estimation includes only events confirmed by the manufacturer's analysis, for which records include an implant date and an event or explant date. Because not all devices are returned to MicroPort CRM for analysis, limitations of passive follow-up are encountered. Data on survival from malfunction (excluding normal battery depletion) are based on returned product analysis. MicroPort CRM does not utilize any prospective, active device follow-up to assess device survival. As such, the survival data likely underestimate malfunction rates.

Device malfunction occurs when a device is **out of specification** after implant or otherwise fails to perform as intended; **normal battery depletions** are not considered to be out of specification.

Note

Performance specifications include all claims made in the labeling for the device. The intended performance of a device refers to the intended use for which the device is labeled or marketed.

A **confirmed malfunction** is the malfunction of an implanted device confirmed by returned product analysis, not including induced malfunctions.

Out of specification means having one or more product characteristics outside the limits established by the manufacturer for clinical use.

According to the international standard ISO 5841-2, and in accordance with the Heart Rhythm Society Task Force on Device Performance Policies and Guidelines⁴, **normal battery depletion** is the condition when:

- a device is returned with no associated complaint and the device has reached its elective replacement indicator(s) with implant time that meets or exceeds the nominal (50th percentile) predicted longevity at default (labeled) settings, or
- a device is returned and the device has reached its elective replacement indicator(s) with implant time exceeding 75% of the expected longevity using the longevity calculation tool available at the time of product introduction, calculated using the device's actual use conditions and settings.

When an implantable pulse generator is returned – and if the return is associated with a complaint – the determination of normal battery depletion is based on returned device analysis using the second criterion of the above Heart Rhythm Society Task Force definition. When an implantable pulse generator is not returned, the physician determines whether the explant is attributed to normal battery depletion.

¹ International Organization for Standardization. International Standard ISO 5841-2:2014(E), Implants for surgery – Cardiac pacemakers – Part 2: Reporting of clinical performance of populations of pulse generators or leads. 2014; Third edition.

² Advanced Medical Technology Association

³ AdvaMed final guidance document dated 21 May 2009 is available at <https://www.advamed.org/resource-center/industry-guidance-uniform-reporting-clinical-performance-cardiac-rhythm-management>

⁴ Carlson MD, Wilkoff BL, Maisel WH, Ellenbogen KA, Saxon LA, Prystowsky EN, et al. Recommendations from the Heart Rhythm Society Task Force on Device Performance Policies and Guidelines. Heart Rhythm 2006; 3(10):1250-73

2.2 Pulse Generator Malfunctions

For pulse generators, **malfunctions** are further separated into malfunctions with compromised therapy or malfunctions without compromised therapy:

- **Malfunction with compromised therapy** is the condition where a device is shown through laboratory analysis to have malfunctioned in a manner that compromised pacing or defibrillation therapy (including complete loss or partial degradation) while implanted and in service. Therapy is considered to have been compromised if no therapy is available or critical patient-protective pacing or defibrillation therapy is not available. Examples include (but are not limited to): sudden loss of battery voltage; accelerated current drain such that low battery was not detected before loss of therapy; sudden malfunction during defibrillation therapy resulting in aborted therapy delivery; or intermittent malfunction in which therapy is compromised while in the malfunction state.
- **Malfunction without compromised therapy** is the condition where a device is shown through laboratory analysis to have malfunctioned in a manner that did not compromise pacing or defibrillation therapy while implanted and in service. Malfunctions in which critical patient-protective pacing and defibrillation therapies are not impacted are included here. Examples include (but are not limited to): error affecting diagnostic functions, data storage; malfunction of a component that causes the battery to lose power quickly enough to result in premature battery depletion, but slowly enough that the condition is detected through normal follow-up before therapy is lost; or telemetry failure.

2.3 Lead reporting data

Product performance reporting data on lead models marketed after 2005 comply with the ISO 5841-2. Application of this methodology shall be extended to all future lead models upon addition to this report.

2.3.1 Acute and chronic lead complications reporting

In accordance with the ISO 5841-2, non-returned leads associated with a complaint are classified as acute lead complications (leads implanted for 30 days or less) or chronic lead complications (leads implanted for more than 30 days) when at least one of the clinical observations categories has been reported (see hierarchical list below), and the lead was

- 1) modified either electrically or surgically to remedy the situation, OR
- 2) left in use based on medical judgment despite a known clinical performance issue

Categories of lead clinical observations (in descending hierarchical order):

- **Cardiac Perforation:** Penetration of the lead tip through the myocardium, clinically suspected and confirmed by chest x-ray, fluoroscopy, echocardiogram, or visual observation, which results in clinical symptoms, typically degradation of pacing/ICD lead electrical performance (high thresholds), chest pain, or tamponade.
- **Conductor Fracture:** A mechanical break within a lead conductor (includes connectors, coils, cables and/or electrodes) observed visually, electrically, or radiographically.
- **Lead Dislodgement:** Radiographic, electrical or electrocardiographic evidence of electrode displacement from the original implant site or electrode displacement that adversely affects pacing and/or lead performance.
- **Failure to Capture:** Intermittent or complete failure to achieve cardiac stimulation (atrial or ventricular) at programmed output delivered outside of the cardiac refractory period. Sudden

and significant increase in the pacing threshold value (elevated thresholds compared to previous measured value) at which 2:1 safety margin can no longer be achieved.

- **Oversensing:** Misinterpretation of cardiac or non-cardiac events as cardiac depolarization, *e.g.* T-waves, skeletal muscle potentials, and extra cardiac electromagnetic interference (EMI).
- **Failure to Sense (undersensing):** Intermittent or complete loss of sensing or failure to detect intended intrinsic cardiac signals (atrial or ventricular) during non-refractory periods at programmed sensitivity settings.
- **Insulation Breach:** A disruption or break in lead insulation observed visually, electrically, or radiographically.
- **Abnormal Pacing Impedance:** Pacing impedance is considered abnormal if a measurement is $< 200 \Omega$ or $> 3000 \Omega$ (based on lead model and measurement range of the device).
- **Abnormal Defibrillation Impedance:** Defibrillation impedance is considered abnormal if a measurement is $< 20 \Omega$ or $> 200 \Omega$ (based on lead model and measurement range of the device). Including high or low shock impedance when attempting to deliver a shock.
- **Extracardiac Stimulation:** Clinical observation of inadvertent nerve/muscle stimulation other than cardiac muscle.
- **Other:** Specific proprietary attributes of a lead such as sensors which affect a lead's ability to perform as designed or remain in service.

Acute and chronic complications shall also include leads removed from service and returned for analysis, where analysis was inconclusive because only portions of the lead were available, or the returned lead was damaged by the explantation process, or where returned product analysis could not determine an out of specification condition.

2.3.2 Mechanical Lead malfunctions (Returned Leads)

Conclusive returned device investigation results of the lead models marketed after 2005 are classified into one of the following four categories of confirmed malfunctions:

- **Conductor Fracture:** Conductor break with complete or intermittent loss of continuity that could interrupt current flow (*e.g.* fractured conductors). This type of malfunction includes any conductor fracture such as those associated with clavicle flex-fatigue or crush damage.
- **Insulation Breach:** Any breach of inner or outer lead insulation. Examples include: 1) proximal abrasions associated with lead-on-lead or lead-on-AIMD contact in the pocket, 2) mid-lead insulation damage caused by clavicle flex-fatigue or crush, suture or suture sleeve, insulation wear in the region of vein insertion, and 3) distal region wear due to lead-on-lead (intracardiac), lead-on-heart valve or lead-on-other anatomy contact.
- **Crimps, Welds, and Bonds:** Any interruption in the conductor or lead body associated with a point of connection.
- **Other:** Includes specific proprietary lead mechanical attributes, such as lead incorporated sensors, connectors (*e.g.* IS-1, DF-1, IS-4, DF-4), or seal rings.

Note

The term "extrinsic" has been removed from the lead confirmed malfunctions in the 2014 version of the ISO 5841-2 standard, but the category of lead complication previously associated with this term is now accounted for in the lead complications (Acute or Chronic).

2.4 Survival graphs

Each survival graph shows “cumulative survival” on its Y-axis. This refers to the probability that the device will remain in the patient’s body without malfunction during the interval from the time the device is implanted up until the point in time shown on the X-axis.

Figure 1 provides an example of the presentation format used in the survival graphs:

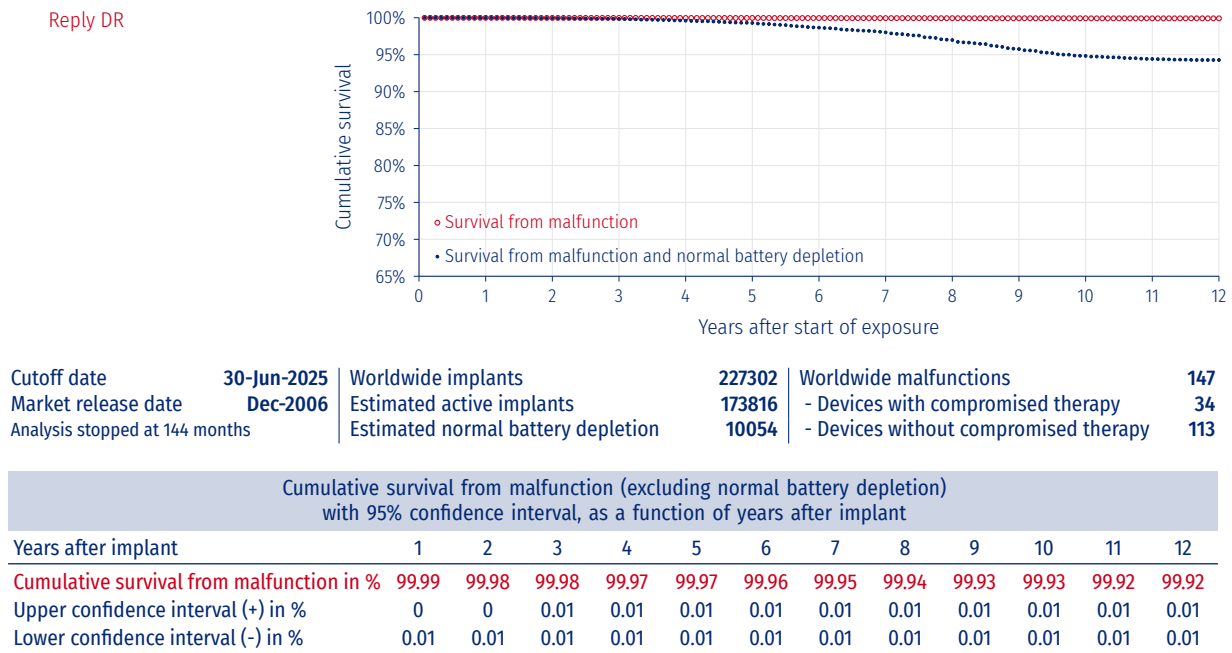


Figure 1

Below, we define each of the data elements in Figure 1 above:

- Reply DR** Model designations for devices covered by each cumulative survival graph appear above the corresponding graph.
- Cutoff date** The graph and table contain all applicable data in the manufacturer’s sales and analysis records as of the cutoff date shown at the lower left side of the corresponding graph.
- Analysis stopped at M months or stopped at M months due to < N exposed devices** Cumulative survival probability is presented for device models with 500 or more estimated active implants and for any devices covered by a Field Safety Notice regardless of the number of estimated active implants. The survival analysis is extended for as long as their exposure duration (up to a maximum of 12 years for Implantable Pulse Generators (IPGs), and 20 years for leads), or until there are less than 50 devices remaining in the analysis.
- Market release date** Date of the first market approval for the device model shown in the graph (earlier of these dates if several models are presented).
- Worldwide implants** Number of devices of the models shown in the graph that have been implanted worldwide.

Estimated active implants	Number of devices estimated in service worldwide at the cutoff date. As the manufacturer collects worldwide data passively, <i>i.e.</i> uses returned products to assess product performance, under-reporting could bias the analysis. To correct this potential bias, the analysis uses device-tracking data collected in the United States for same or similar types of devices, to estimate the fraction of exposed devices withdrawn each month for: <ul style="list-style-type: none">- reasons not related to the functioning of the device- loss to follow-up- normal battery depletion- patient death
Estimated normal battery depletion	Number of devices estimated out of service worldwide due to normal battery depletion at the cutoff date. See definition of “normal battery depletion” in Section 2.1 on page 7. To correct potential bias due to under-reporting of normal battery depletion worldwide, when the same or similar models are marketed in the United States, the analysis uses US device-tracking data to estimate the fraction of exposed devices withdrawn each month for normal battery depletion. In order to account for potential bias due to under-reporting of normal battery depletion, a device that has not been returned but whose explant was attributed to normal battery depletion – by the physician – is therefore added to the normal battery depletion statistics. “Estimated normal battery depletion” is shown only for device models marketed in the United States; this field contains “Not available” when US device-tracking data is missing.
Worldwide malfunctions	Number of devices confirmed out of specification worldwide after implant, except due to normal battery depletion.
Years after start of exposure	Number of years the device remains in the body after the device is implanted. When the date of implant is unknown, the analysis uses an estimate based on available evidence – between the date of sale and the expiration date – as a surrogate for date of implant. Similarly, when the explant date is not identifiable, the first known reference is used (<i>e.g.</i> date of a letter from the physician to the subsidiary, date the manufacturer became aware of the event...). The survival analysis calculates time to the nearest day; however, for convenience, the graphs and tables report time in years.
Cumulative survival curves	Each survival graph contains the survival curve for freedom from malfunction, in red. When the device is marketed in the United States, a second survival curve for normal battery depletion and malfunction is shown on the same graph (the lower curve), in blue. A table provides annual values corresponding to the upper curve, with confidence limits.
Devices with and without compromised therapy	The number of malfunctions with and without compromised therapy is documented in a table below the survival curves data.

Note that the exposure time for each implant begins on the date of distribution as the implant date is often not known. Some survival curves may appear to have a maximum years of exposure greater than the time since the market release date. This can be caused by products used in clinical trials prior to commercial release.

For the newest models, due to progressive sales ramp-up, reaching the criterion for inclusion in this report (*i.e.* 500 or more estimated active implants) can take a long time for some models. Combining

same or similar models together allows including survival data in the Product Performance Report much earlier than it would be possible reporting them separately.

Because we use device-tracking data collected in the US for same or similar types of devices to estimate the data related to normal battery depletion, and due to lower sales volume in the US, reaching a significant number of US reports for normal battery depletion (threshold is set to 10) can also take a long time for some models. Therefore same or similar devices might be combined together, and they will be reported separately when there is enough US reports for normal battery depletion for each device model.

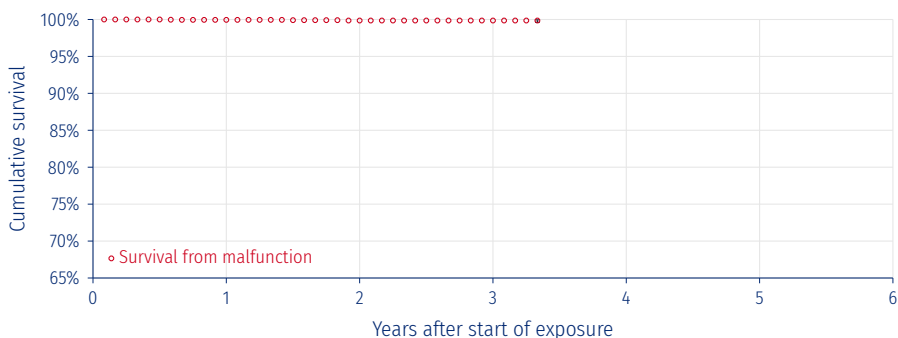
Field Safety Notices associated with the products are also indicated; each Field Safety Notice is described in Section 6 of this report, pp. 53-87. Cumulative survival graphs are presented separately for non-Field Safety Notice and Field Safety Notice device populations (when applicable): survival graphs for non-Field Safety Notice device populations are presented in the actual device model section (for device models with 500 or more estimated active implants), and survival graphs for Field Safety Notice device populations are presented in Section 6 of the report, thus providing the healthcare community with clinically relevant, patient-specific device performance.

3 Cardiac Resynchronization Therapy (CRT)

3.1 Cardiac Resynchronization Therapy Defibrillators (CRT-D)

3.1.1 GALI

GALI CRT-D 2711
GALI CRT-D 2741
GALI 4LV CRT-D 2744
GALI SonR CRT-D 2811
GALI SonR CRT-D 2841
GALI 4LV SonR CRT-D 2844

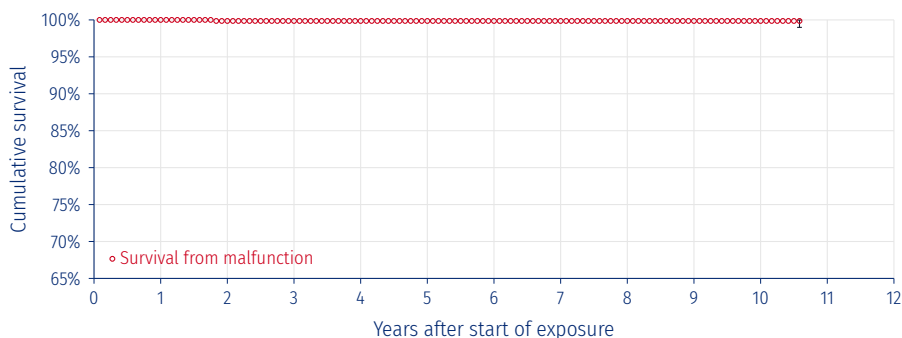


Cutoff date	30-Jun-2025	Worldwide implants	4344	Worldwide malfunctions	4
Market release date	Jul-2021	Estimated active implants	3940	- Devices with compromised therapy	3
Analysis stopped at 40 months due to < 50 exposed devices		Estimated normal battery depletion	N/A	- Devices without compromised therapy	1

Years after implant	1	2	3	4	5	6
Cumulative survival from malfunction in %	99.95	99.86	99.86			
Upper confidence interval (+) in %	0.04	0.09	0.09			
Lower confidence interval (-) in %	0.15	0.24	0.24			

3.1.2 Intensia CRT-D

Intensia CRT-D 174
Intensia SonR CRT-D 184



Cutoff date	30-Jun-2025	Worldwide implants	771	Worldwide malfunctions	1
Market release date	Nov-2013	Estimated active implants	529	- Devices with compromised therapy	1
Analysis stopped at 127 months due to < 50 exposed devices		Estimated normal battery depletion	N/A	- Devices without compromised therapy	0

Years after implant	1	2	3	4	5	6	7	8	9	10	11	12
Cumulative survival from malfunction in %	100	99.86	99.86	99.86	99.86	99.86	99.86	99.86	99.86	99.86		
Upper confidence interval (+) in %	0	0.12	0.12	0.12	0.12	0.12	0.12	0.12	0.12	0.12		
Lower confidence interval (-) in %	0	0.87	0.87	0.87	0.87	0.87	0.87	0.87	0.87	0.87		

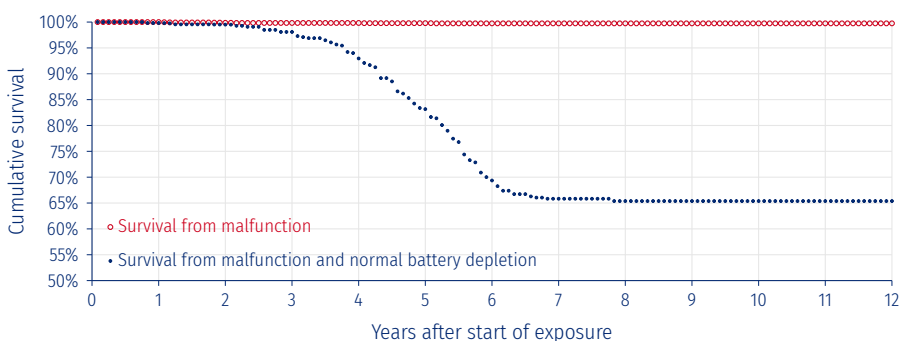
A Field Safety Notice was issued for Intensia devices. Please refer to Section 6.1.4, pp. 56-59.

3.1 Cardiac Resynchronization Therapy Defibrillators (CRT-D)

[« Go back to Table of Contents](#)

3.1.3 Ovatio CRT 6750

Ovatio CRT 6750



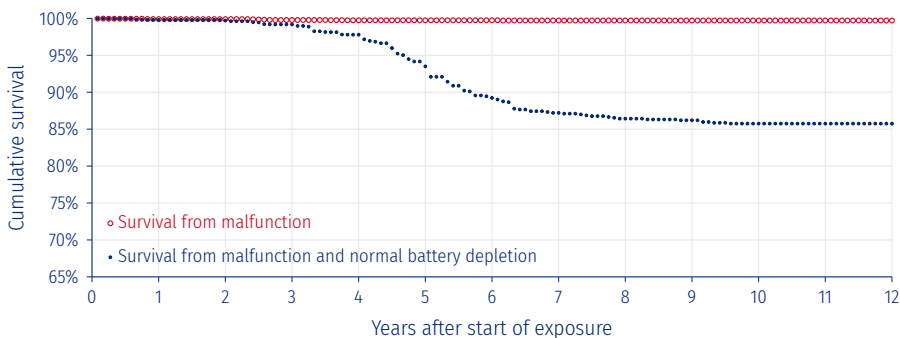
Cutoff date	30-Jun-2025	Worldwide implants	3944	Worldwide malfunctions	8
Market release date	Apr-2005	Estimated active implants	1841	- Devices with compromised therapy	6
Analysis stopped at 144 months		Estimated normal battery depletion	1047	- Devices without compromised therapy	2

Cumulative survival from malfunction (excluding normal battery depletion) with 95% confidence interval, as a function of years after implant												
Years after implant	1	2	3	4	5	6	7	8	9	10	11	12
Cumulative survival from malfunction in %	100	99.86	99.83	99.83	99.79	99.75	99.75	99.75	99.75	99.75	99.75	99.75
Upper confidence interval (+) in %	0	0.08	0.1	0.1	0.11	0.12	0.12	0.12	0.12	0.12	0.12	0.12
Lower confidence interval (-) in %	0	0.2	0.21	0.21	0.23	0.25	0.25	0.25	0.25	0.25	0.25	0.25

A Field Safety Notice was issued for Ovatio devices. Please refer to Section 6.1.4, pp. 56-59.

3.1.4 Paradym CRT-D 8750

Paradym CRT-D 8750



Cutoff date	30-Jun-2025	Worldwide implants	5966	Worldwide malfunctions	15
Market release date	Apr-2008	Estimated active implants	3915	- Devices with compromised therapy	3
Analysis stopped at 144 months		Estimated normal battery depletion	666	- Devices without compromised therapy	12

Cumulative survival from malfunction (excluding normal battery depletion) with 95% confidence interval, as a function of years after implant												
Years after implant	1	2	3	4	5	6	7	8	9	10	11	12
Cumulative survival from malfunction in %	99.9	99.9	99.78	99.74	99.74	99.74	99.71	99.71	99.71	99.71	99.71	99.71
Upper confidence interval (+) in %	0.06	0.06	0.1	0.11	0.11	0.11	0.11	0.11	0.11	0.11	0.11	0.11
Lower confidence interval (-) in %	0.13	0.13	0.17	0.18	0.18	0.18	0.19	0.19	0.19	0.19	0.19	0.19

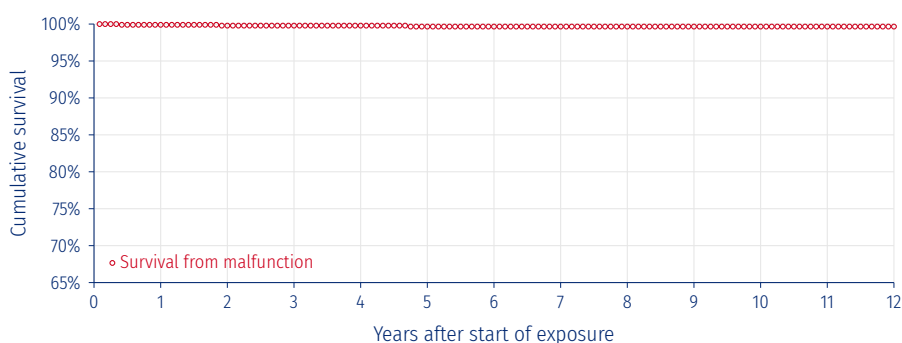
Field Safety Notices were issued for Paradym devices. Please refer to Sections 6.1.1 to 6.1.2, pp. 53-55 and Section 6.1.4, pp. 56-59.

3.1 Cardiac Resynchronization Therapy Defibrillators (CRT-D)

[« Go back to Table of Contents](#)

3.1.5 Paradym SonR CRT-D 8770 - SonR TriV 8970

Paradym SonR CRT-D 8770
Paradym SonR TriV 8970



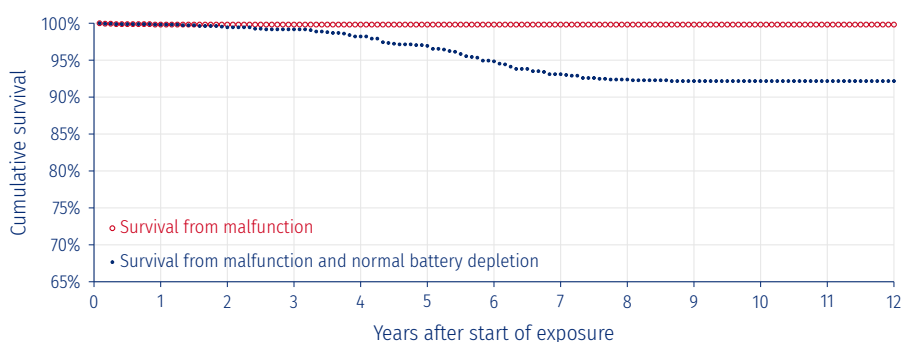
Cutoff date	30-Jun-2025	Worldwide implants	1049	Worldwide malfunctions	3
Market release date	Nov-2007	Estimated active implants	638	- Devices with compromised therapy	1
Analysis stopped at 144 months		Estimated normal battery depletion	N/A	- Devices without compromised therapy	2

Cumulative survival from malfunction (excluding normal battery depletion) with 95% confidence interval, as a function of years after implant												
Years after implant	1	2	3	4	5	6	7	8	9	10	11	12
Cumulative survival from malfunction in %	99.9	99.79	99.79	99.79	99.66	99.66	99.66	99.66	99.66	99.66	99.66	99.66
Upper confidence interval (+) in %	0.09	0.16	0.16	0.16	0.23	0.23	0.23	0.23	0.23	0.23	0.23	0.23
Lower confidence interval (-) in %	0.62	0.64	0.64	0.64	0.73	0.73	0.73	0.73	0.73	0.73	0.73	0.73

Field Safety Notices were issued for Paradym devices. Please refer to Sections 6.1.1 to 6.1.2, pp. 53-55 and Section 6.1.4, pp. 56-59.

3.1.6 Paradym RF CRT-D 9750

Paradym RF CRT-D 9750



Cutoff date	30-Jun-2025	Worldwide implants	1704	Worldwide malfunctions	3
Market release date	Sep-2010	Estimated active implants	1270	- Devices with compromised therapy	2
Analysis stopped at 144 months		Estimated normal battery depletion	108	- Devices without compromised therapy	1

Cumulative survival from malfunction (excluding normal battery depletion) with 95% confidence interval, as a function of years after implant												
Years after implant	1	2	3	4	5	6	7	8	9	10	11	12
Cumulative survival from malfunction in %	99.82	99.82	99.82	99.82	99.82	99.82	99.82	99.82	99.82	99.82	99.82	99.82
Upper confidence interval (+) in %	0.12	0.12	0.12	0.12	0.12	0.12	0.12	0.12	0.12	0.12	0.12	0.12
Lower confidence interval (-) in %	0.38	0.38	0.38	0.38	0.38	0.38	0.38	0.38	0.38	0.38	0.38	0.38

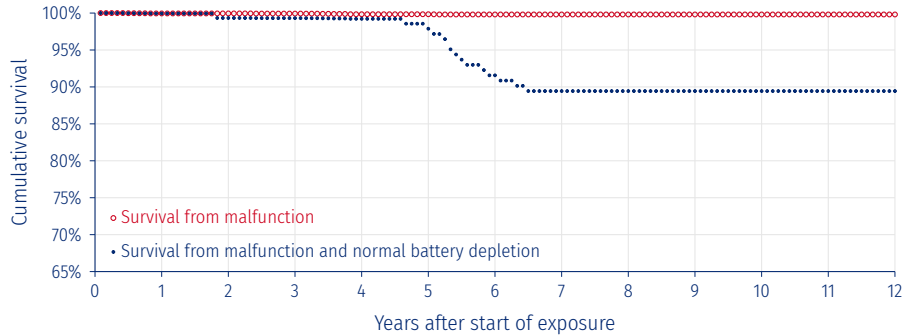
A Field Safety Notice was issued for Paradym RF devices. Please refer to Section 6.1.4, pp. 56-59.

3.1 Cardiac Resynchronization Therapy Defibrillators (CRT-D)

« Go back to [Table of Contents](#)

3.1.7 Paradym RF SonR CRT-D 9770

Paradym RF SonR CRT-D 9770



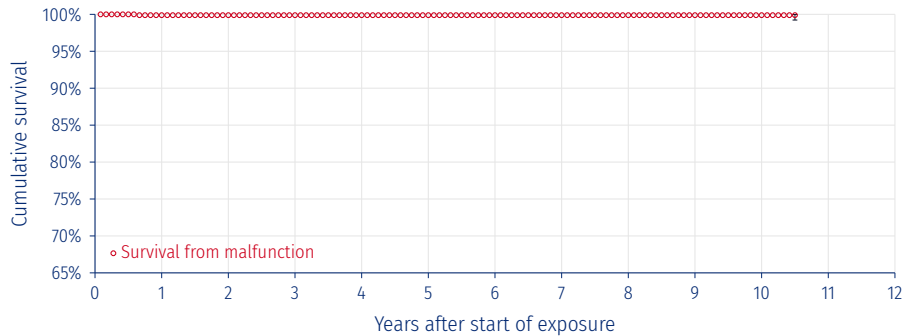
Cutoff date	30-Jun-2025	Worldwide implants	6347	Worldwide malfunctions	11
Market release date	Sep-2010	Estimated active implants	4632	- Devices with compromised therapy	3
Analysis stopped at 144 months		Estimated normal battery depletion	558	- Devices without compromised therapy	8

Cumulative survival from malfunction (excluding normal battery depletion) with 95% confidence interval, as a function of years after implant												
Years after implant	1	2	3	4	5	6	7	8	9	10	11	12
Cumulative survival from malfunction in %	99.95	99.95	99.93	99.84	99.84	99.81	99.81	99.81	99.81	99.81	99.81	99.81
Upper confidence interval (+) in %	0.03	0.03	0.04	0.07	0.07	0.09	0.09	0.09	0.09	0.09	0.09	0.09
Lower confidence interval (-) in %	0.1	0.1	0.11	0.14	0.14	0.16	0.16	0.16	0.16	0.16	0.16	0.16

A Field Safety Notice was issued for Paradym RF devices. Please refer to Section 6.1.4, pp. 56-59.

3.1.8 Paradym 2 CRT-D 8752 - SonR CRT-D 8772

Paradym 2 CRT-D 8752
Paradym 2 SonR CRT-D 8772



Cutoff date	30-Jun-2025	Worldwide implants	966	Worldwide malfunctions	1
Market release date	May-2012	Estimated active implants	660	- Devices with compromised therapy	1
Analysis stopped at 126 months due to < 50 exposed devices		Estimated normal battery depletion	N/A	- Devices without compromised therapy	0

Cumulative survival from malfunction (excluding normal battery depletion) with 95% confidence interval, as a function of years after implant												
Years after implant	1	2	3	4	5	6	7	8	9	10	11	12
Cumulative survival from malfunction in %	99.89	99.89	99.89	99.89	99.89	99.89	99.89	99.89	99.89	99.89	99.89	99.89
Upper confidence interval (+) in %	0.09	0.09	0.09	0.09	0.09	0.09	0.09	0.09	0.09	0.09	0.09	0.09
Lower confidence interval (-) in %	0.66	0.66	0.66	0.66	0.66	0.66	0.66	0.66	0.66	0.66	0.66	0.66

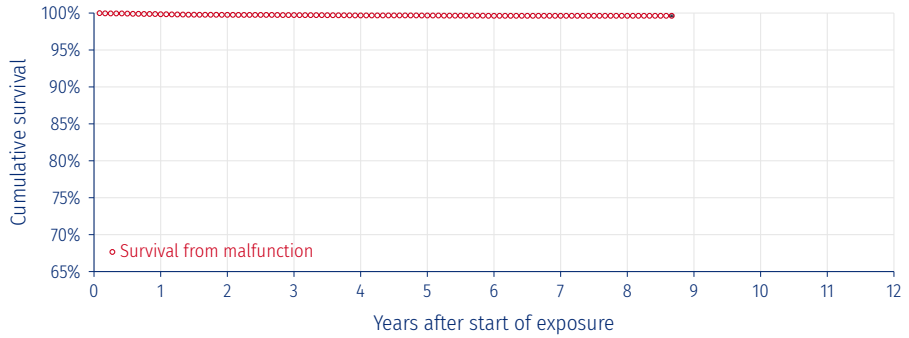
A Field Safety Notice was issued for Paradym 2 devices. Please refer to Section 6.1.4, pp. 56-59.

3.1 Cardiac Resynchronization Therapy Defibrillators (CRT-D)

[« Go back to Table of Contents](#)

3.1.9 Platinum CRT-D

Platinum CRT-D 1711
Platinum CRT-D 1741
Platinum SonR CRT-D 1811
Platinum SonR CRT-D 1841
Platinum 4LV CRT-D 1744
Platinum 4LV SonR CRT-D 1844



Cutoff date	30-Jun-2025	Worldwide implants	13607	Worldwide malfunctions	46
Market release date	Jun-2015	Estimated active implants	11324	- Devices with compromised therapy	22
Analysis stopped at 104 months due to < 50 exposed devices		Estimated normal battery depletion	N/A	- Devices without compromised therapy	24

Cumulative survival from malfunction (excluding normal battery depletion) with 95% confidence interval, as a function of years after implant												
Years after implant	1	2	3	4	5	6	7	8	9	10	11	12
Cumulative survival from malfunction in %	99.84	99.76	99.73	99.68	99.67	99.63	99.63	99.63				
Upper confidence interval (+) in %	0.05	0.07	0.08	0.08	0.09	0.1	0.1	0.1				
Lower confidence interval (-) in %	0.08	0.1	0.1	0.11	0.12	0.13	0.13	0.13				

Field Safety Notices were issued for Platinum devices. Please refer to Sections 6.1.5 to 6.1.9, pp. 60-69.

3.1 Cardiac Resynchronization Therapy Defibrillators (CRT-D)

[« Go back to Table of Contents](#)

3.1.10 Cardiac Resynchronization Therapy Defibrillators (CRT-D) synopsis

The table presented below summarizes device information:

Models	Family	Market release date	Worldwide implants	Estimated active implants	Estimated normal batt. depletion	Worldwide malfunctions	Devices with compromised therapy	Devices without compromised therapy
GALI 4LV CRT-D 2744	GALI	Jul-21	4344	3940	-	4	3	1
GALI 4LV SonR CRT-D 2844		Jul-21						
GALI CRT-D 2711		Jul-21						
GALI CRT-D 2741		Jul-21						
GALI SonR CRT-D 2811		Jul-21						
GALI SonR CRT-D 2841		Jul-21						
Intensia CRT-D 174	Intensia	Nov-13	771	529	-	1	1	0
Intensia SonR CRT-D 184		Nov-13						
Ovatio CRT 6750	Ovatio	Apr-05	3944	1841	1047	8	6	2
Paradym CRT-D 8750	Paradym	Apr-08	5966	3915	666	15	3	12
Paradym SonR CRT-D 8770		Nov-07						
Paradym SonR TriV 8970	Paradym RF	Jun-14	1704	1270	108	3	2	1
Paradym RF CRT-D 9750		Sep-10						
Paradym RF SonR CRT-D 9770	Paradym 2	Sep-10	6347	4632	558	11	3	8
Paradym 2 CRT-D 8752		May-12						
Paradym 2 SonR CRT-D 8772	Platinum	Mar-14	13607	11324	-	46	22	24
Platinum 4LV CRT-D 1744		Apr-17						
Platinum 4LV SonR CRT-D 1844	Platinum	Jan-16	13607	11324	-	46	22	24
Platinum CRT-D 1711		Oct-15						
Platinum CRT-D 1741		Nov-15						
Platinum SonR CRT-D 1811		Jun-15						
Platinum SonR CRT-D 1841		Jun-15						

The table presented below summarizes cumulative survival probability from malfunction:

Models	Family	Cumulative survival from malfunction (%) as a function of years after implant											
		1	2	3	4	5	6	7	8	9	10	11	12
GALI 4LV CRT-D 2744	GALI	99.95	99.86	99.86									
GALI 4LV SonR CRT-D 2844													
GALI CRT-D 2711													
GALI CRT-D 2741													
GALI SonR CRT-D 2811													
GALI SonR CRT-D 2841													
Intensia CRT-D 174	Intensia	100	99.86	99.86	99.86	99.86	99.86	99.86	99.86	99.86	99.86	99.86	
Intensia SonR CRT-D 184													
Ovatio CRT 6750	Ovatio	100	99.86	99.83	99.83	99.79	99.75	99.75	99.75	99.75	99.75	99.75	99.75
Paradym CRT-D 8750	Paradym	99.9	99.9	99.78	99.74	99.74	99.74	99.71	99.71	99.71	99.71	99.71	99.71
Paradym SonR CRT-D 8770		Nov-07	99.9	99.79	99.79	99.79	99.66	99.66	99.66	99.66	99.66	99.66	99.66
Paradym SonR TriV 8970	Paradym RF												
Paradym RF CRT-D 9750		Sep-10	99.82	99.82	99.82	99.82	99.82	99.82	99.82	99.82	99.82	99.82	99.82
Paradym RF SonR CRT-D 9770	Paradym 2	99.95	99.95	99.93	99.84	99.84	99.81	99.81	99.81	99.81	99.81	99.81	99.81
Paradym 2 CRT-D 8752		May-12	99.89	99.89	99.89	99.89	99.89	99.89	99.89	99.89	99.89	99.89	99.89
Paradym 2 SonR CRT-D 8772	Platinum												
Platinum 4LV CRT-D 1744		Apr-17	99.84	99.76	99.73	99.68	99.67	99.63	99.63	99.63			
Platinum 4LV SonR CRT-D 1844													
Platinum CRT-D 1711													
Platinum CRT-D 1741													
Platinum SonR CRT-D 1811													
Platinum SonR CRT-D 1841													

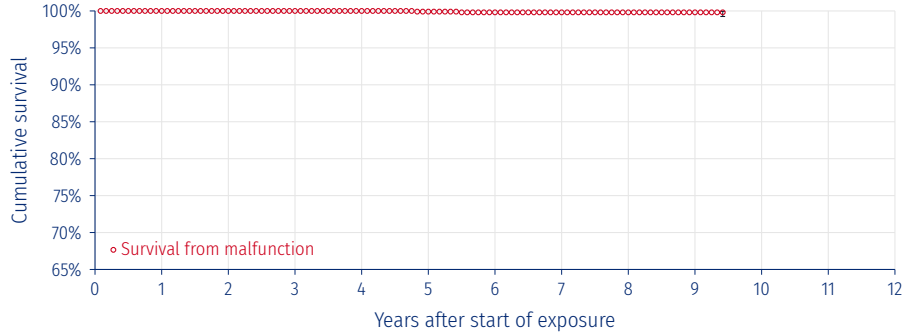
3.2 Cardiac Resynchronization Therapy Pacemakers (CRT-P)

« Go back to [Table of Contents](#)

3.2 Cardiac Resynchronization Therapy Pacemakers (CRT-P)

3.2.1 Reply CRT-P

Reply CRT-P



Cutoff date	30-Jun-2025	Worldwide implants	1887	Worldwide malfunctions	2
Market release date	Jul-2015	Estimated active implants	1795	- Devices with compromised therapy	0
Analysis stopped at 113 months due to < 50 exposed devices		Estimated normal battery depletion	N/A	- Devices without compromised therapy	2

Cumulative survival from malfunction (excluding normal battery depletion) with 95% confidence interval, as a function of years after implant												
Years after implant	1	2	3	4	5	6	7	8	9	10	11	12
Cumulative survival from malfunction in %	100	100	100	100	99.91	99.81	99.81	99.81	99.81			
Upper confidence interval (+) in %	0	0	0	0	0.07	0.14	0.14	0.14	0.14			
Lower confidence interval (-) in %	0	0	0	0	0.52	0.56	0.56	0.56	0.56			

3.2 Cardiac Resynchronization Therapy Pacemakers (CRT-P)

[« Go back to Table of Contents](#)

3.2.2 Cardiac Resynchronization Therapy Pacemakers (CRT-P) synopsis

The table presented below summarizes device information:

Models	Family	Market release date	Worldwide implants	Estimated active implants	Worldwide malfunctions	Devices with compromised therapy	Devices without compromised therapy
Reply CRT-P	Reply CRT-P	Jul-15	1887	1795	2	0	2

The table presented below summarizes cumulative survival probability from malfunction:

Models	Family	Cumulative survival from malfunction (%) as a function of years after implant											
		1	2	3	4	5	6	7	8	9	10	11	12
Reply CRT-P	Reply CRT-P	100	100	100	100	99.91	99.81	99.81	99.81	99.81	99.81		

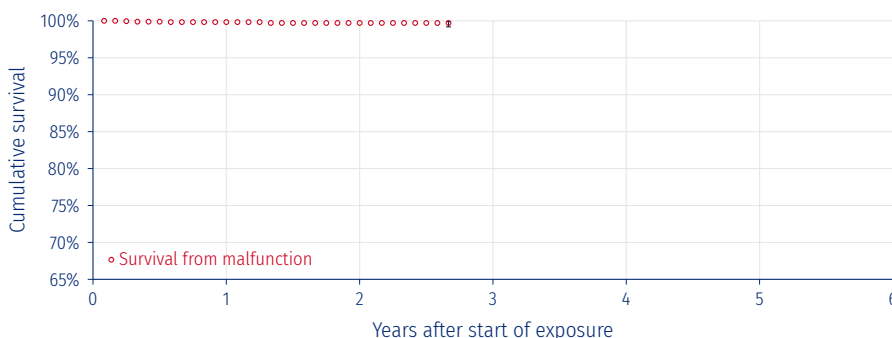
3.3 Cardiac Resynchronization Therapy leads

3.3.1 Celerity 2D - 3D - Pilot

The Celerity lead models are/will be reported in Biotronik's Product Performance Report⁵, provided that they reach the inclusion criteria (Refer to the Celerity and Corox sections).

3.3.2 Navigo

Navigo 2D 78
 Navigo 2D 88
 Navigo ARC 78
 Navigo ARC 88
 Navigo PILOT 78
 Navigo PILOT 88



Cutoff date	30-Jun-2025	Worldwide implants	2108	Worldwide malfunctions	4
Market release date	Mar-2022	Estimated active implants	1988	- Devices with compromised therapy	0
Analysis stopped at 32 months due to < 50 exposed devices				- Devices without compromised therapy	4

Cumulative survival from malfunction with 95% confidence interval, as a function of years after implant						
Years after implant	1	2	3	4	5	6
Cumulative survival from malfunction in %	99.83	99.71				
Upper confidence interval (+) in %	0.12	0.18				
Lower confidence interval (-) in %	0.36	0.52				

Lead malfunctions	Lead malfunctions		Lead complications	Acute lead complications	Chronic lead complications
	Without compromised therapy	With compromised therapy			
Conductor Fracture	0	0	Abnormal Defibrillation Impedance	0	0
Crimps, Welds, and Bonds	0	0	Abnormal Pacing Impedance	0	1
Insulation Breach	0	0	Cardiac Perforation	0	0
Other	0	0	Conductor Fracture	0	0
All lead malfunctions	0	0	Extracardiac Stimulation	0	0
			Failure to Capture	1	1
			Failure to Sense (undersensing)	0	0
			Insulation Breach	0	0
			Lead Dislodgement	3	4
			Other	0	0
			Oversensing	0	0
			All lead complications	4	6

Note: the above survival curve only accounts for Lead malfunctions and Chronic lead complications; it does not include Acute lead complications, in accordance with the international standard ISO 5841-2.

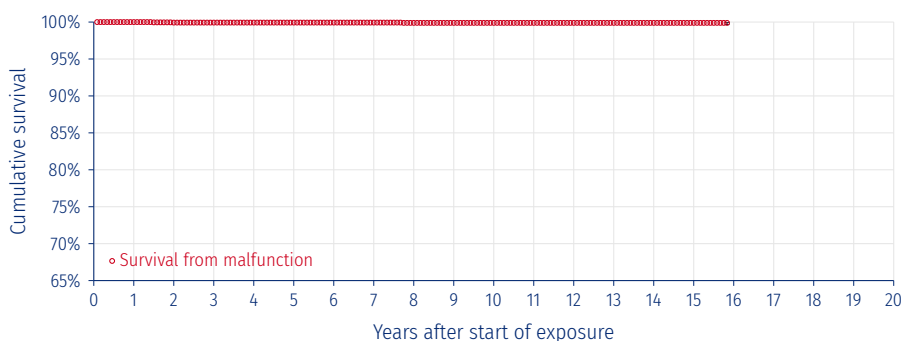
⁵ Biotronik's PPR document is available on Biotronik's website at: <https://www.biotronik.com/en-gb/healthcare-professionals/product-performance-report>

3.3 Cardiac Resynchronization Therapy leads

[« Go back to Table of Contents](#)

3.3.3 Situs OTW BW28D - OTW BW28D MV

Situs OTW BW28D
Situs OTW BW28D MV



Cutoff date	30-Jun-2025	Worldwide implants	2956	Worldwide malfunctions	3
Market release date	May-2008	Estimated active implants	2516	- Devices with compromised therapy	2
Analysis stopped at 190 months due to < 50 exposed devices				- Devices without compromised therapy	1

Cumulative survival from malfunction with 95% confidence interval, as a function of years after implant																				
Years after implant	1	2	3	4	5	6	7	8	9	10	11	12	13	14	15	16	17	18	19	20
Cumulative survival from malfunction in %	100	99.93	99.93	99.93	99.93	99.93	99.93	99.89	99.89	99.89	99.89	99.89	99.89	99.89	99.89	99.89				
Upper confidence interval (+) in %	0	0.05	0.05	0.05	0.05	0.05	0.05	0.08	0.08	0.08	0.08	0.08	0.08	0.08	0.08	0.08				
Lower confidence interval (-) in %	0	0.22	0.22	0.22	0.22	0.22	0.22	0.23	0.23	0.23	0.23	0.23	0.23	0.23	0.23	0.23				

Lead malfunctions	Lead malfunctions		Lead complications		
	Without compromised therapy	With compromised therapy		Acute lead complications	Chronic lead complications
Conductor Fracture	0	1	Abnormal Defibrillation Impedance	0	0
Crimps, Welds, and Bonds	0	0	Abnormal Pacing Impedance	0	0
Insulation Breach	0	0	Cardiac Perforation	0	0
Other	0	0	Conductor Fracture	0	0
All lead malfunctions	0	1	Extracardiac Stimulation	0	0
			Failure to Capture	0	1
			Failure to Sense (undersensing)	0	0
			Insulation Breach	0	0
			Lead Dislodgement	0	0
			Other	0	0
			Oversensing	0	0
			All lead complications	0	1

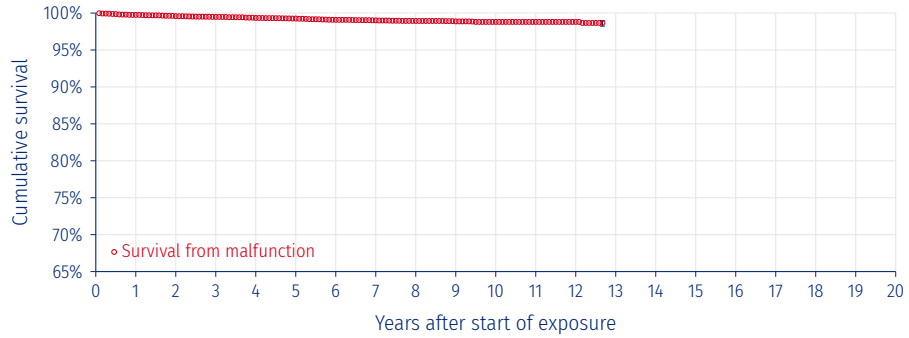
Note: the above survival curve only accounts for Lead malfunctions and Chronic lead complications; it does not include Acute lead complications, in accordance with the international standard ISO 5841-2.

3.3 Cardiac Resynchronization Therapy leads

[« Go back to Table of Contents](#)

3.3.4 SonRtip

SonRtip



Cutoff date	30-Jun-2025	Worldwide implants	10830	Worldwide malfunctions	101
Market release date	Dec-2011	Estimated active implants	9305	- Devices with compromised therapy	58
Analysis stopped at 152 months due to < 50 exposed devices				- Devices without compromised therapy	43

Cumulative survival from malfunction with 95% confidence interval, as a function of years after implant																				
Years after implant	1	2	3	4	5	6	7	8	9	10	11	12	13	14	15	16	17	18	19	20
Cumulative survival from malfunction in %	99.75	99.59	99.48	99.34	99.26	99.08	99.01	98.93	98.87	98.8	98.8	98.8								
Upper confidence interval (+) in %	0.08	0.11	0.12	0.14	0.16	0.18	0.19	0.2	0.21	0.22	0.22	0.22								
Lower confidence interval (-) in %	0.12	0.15	0.16	0.18	0.2	0.22	0.23	0.24	0.25	0.27	0.27	0.27								

Lead malfunctions	Lead complications		Acute lead complications	Chronic lead complications
	Without compromised therapy	With compromised therapy		
Conductor Fracture	0	7	0	0
Crimps, Welds, and Bonds	0	3	0	7
Insulation Breach	0	10	2	1
Other	0	0	0	1
Conductor Fracture	0	7	0	0
Crimps, Welds, and Bonds	0	3	3	13
Insulation Breach	0	10	0	1
Other	0	0	3	6
Conductor Fracture	0	7	0	0
Crimps, Welds, and Bonds	0	3	1	27
Insulation Breach	0	10	1	29
Other	0	0	1	29
All lead malfunctions	0	20	All lead complications	10
				85

Note: the above survival curve only accounts for Lead malfunctions and Chronic lead complications; it does not include Acute lead complications, in accordance with the international standard ISO 5841-2.

Note that the survival curve for this product includes data from leads that were involved in pre-market clinical studies.

A Field Safety Notice was issued for SonRtip leads. Please refer to Section 6.3.3, pp. 84-85.

3.3 Cardiac Resynchronization Therapy leads

[« Go back to Table of Contents](#)

3.3.5 Cardiac Resynchronization Therapy leads synopsis

The table presented below summarizes device information:

Models	Family	Market release date	Worldwide implants	Estimated active implants	Worldwide malfunctions	Devices with compromised therapy	Devices without compromised therapy	Devices returned and analyzed
Navigo 2D 78	NAVIGO	Mar-22	2108	1988	4	0	4	N/A*
Navigo 2D 88		Mar-22						
Navigo ARC 78		Mar-22						
Navigo ARC 88		Mar-22						
Navigo PILOT 78		Mar-22						
Navigo PILOT 88		Mar-22						
Situs OTW BW28D	Situs	May-08	2956	2516	3	2	1	N/A*
Situs OTW BW28D MV		May-08						
SonRtip	SonR	Dec-11	10830	9305	101	58	43	67

*Only available for our most recent models

The table presented below summarizes cumulative survival probability from malfunction:

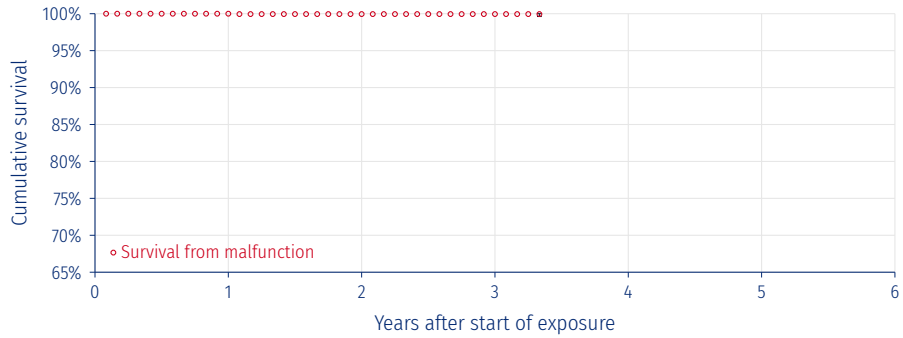
Models	Family	Cumulative survival from malfunction (%) as a function of years after implant																				
		1	2	3	4	5	6	7	8	9	10	11	12	13	14	15	16	17	18	19	20	
Navigo 2D 78	NAVIGO	99.83	99.71																			
Navigo 2D 88																						
Navigo ARC 78																						
Navigo ARC 88																						
Navigo PILOT 78																						
Navigo PILOT 88																						
Situs OTW BW28D	Situs	100	99.93	99.93	99.93	99.93	99.93	99.93	99.93	99.89	99.89	99.89	99.89	99.89	99.89	99.89	99.89	99.89	99.89	99.89	99.89	
Situs OTW BW28D MV																						
SonRtip	SonR	99.75	99.59	99.48	99.34	99.26	99.08	99.01	98.93	98.87	98.8	98.8	98.8	98.8	98.8	98.8	98.8	98.8	98.8	98.8	98.8	

4 Tachycardia therapy

4.1 Implantable Cardioverter Defibrillators (ICDs)

4.1.1 EDIS

EDIS DR 2410
EDIS DR 2440
EDIS VR 2110
EDIS VR 2140

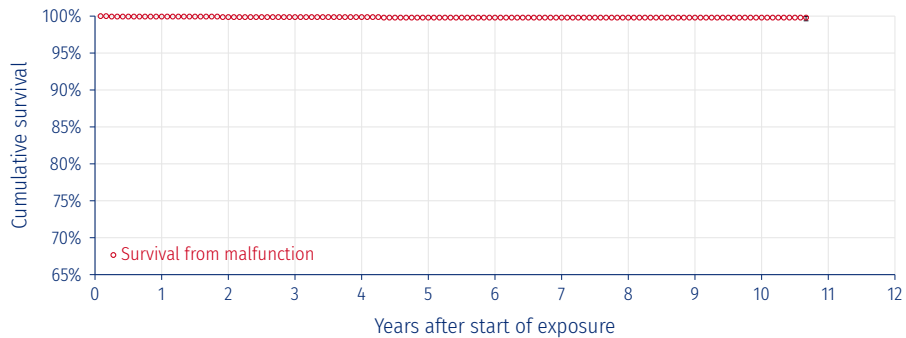


Cutoff date	30-Jun-2025	Worldwide implants	2203	Worldwide malfunctions	1
Market release date	Jul-2021	Estimated active implants	2051	- Devices with compromised therapy	0
Analysis stopped at 40 months due to < 50 exposed devices		Estimated normal battery depletion	N/A	- Devices without compromised therapy	1

Cumulative survival from malfunction (excluding normal battery depletion) with 95% confidence interval, as a function of years after implant						
Years after implant	1	2	3	4	5	6
Cumulative survival from malfunction in %	100	99.95	99.95			
Upper confidence interval (+) in %	0	0.05	0.05			
Lower confidence interval (-) in %	0	0.33	0.33			

4.1.2 Intensia DR 154 - VR 124

Intensia DR 154
Intensia VR 124



Cutoff date	30-Jun-2025	Worldwide implants	1609	Worldwide malfunctions	3
Market release date	Nov-2013	Estimated active implants	1209	- Devices with compromised therapy	1
Analysis stopped at 128 months due to < 50 exposed devices		Estimated normal battery depletion	N/A	- Devices without compromised therapy	2

Cumulative survival from malfunction (excluding normal battery depletion) with 95% confidence interval, as a function of years after implant												
Years after implant	1	2	3	4	5	6	7	8	9	10	11	12
Cumulative survival from malfunction in %	99.94	99.87	99.87	99.87	99.8	99.8	99.8	99.8	99.8	99.8	99.8	
Upper confidence interval (+) in %	0.05	0.1	0.1	0.1	0.14	0.14	0.14	0.14	0.14	0.14	0.14	
Lower confidence interval (-) in %	0.38	0.39	0.39	0.39	0.43	0.43	0.43	0.43	0.43	0.43	0.43	

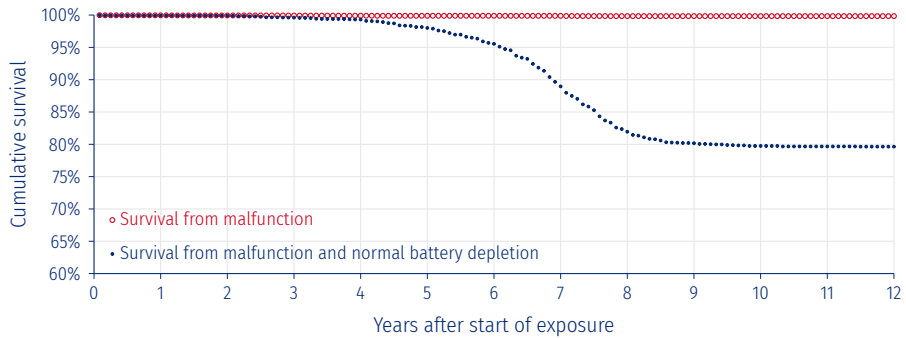
A Field Safety Notice was issued for Intensia devices. Please refer to Section 6.1.4, pp. 56-59.

4.1 Implantable Cardioverter Defibrillators (ICDs)

[« Go back to Table of Contents](#)

4.1.3 Ovatio DR 6550

Ovatio DR 6550



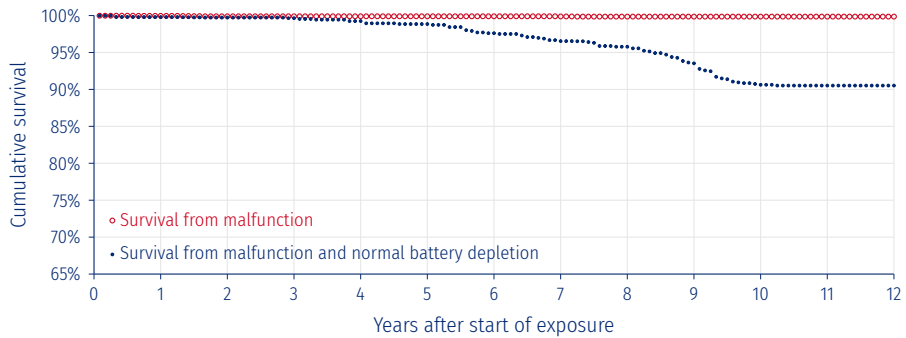
Cutoff date	30-Jun-2025	Worldwide implants	11461	Worldwide malfunctions	16
Market release date	May-2005	Estimated active implants	7440	- Devices with compromised therapy	14
Analysis stopped at 144 months		Estimated normal battery depletion	1922	- Devices without compromised therapy	2

Cumulative survival from malfunction (excluding normal battery depletion) with 95% confidence interval, as a function of years after implant												
Years after implant	1	2	3	4	5	6	7	8	9	10	11	12
Cumulative survival from malfunction in %	99.96	99.94	99.93	99.9	99.89	99.89	99.88	99.84	99.84	99.84	99.84	99.84
Upper confidence interval (+) in %	0.03	0.03	0.04	0.05	0.05	0.05	0.05	0.06	0.06	0.06	0.06	0.06
Lower confidence interval (-) in %	0.06	0.07	0.07	0.08	0.09	0.09	0.09	0.1	0.1	0.1	0.1	0.1

A Field Safety Notice was issued for Ovatio devices. Please refer to Section 6.1.4, pp. 56-59.

4.1.4 Ovatio VR 6250

Ovatio VR 6250



Cutoff date	30-Jun-2025	Worldwide implants	5494	Worldwide malfunctions	7
Market release date	May-2005	Estimated active implants	3746	- Devices with compromised therapy	5
Analysis stopped at 144 months		Estimated normal battery depletion	405	- Devices without compromised therapy	2

Cumulative survival from malfunction (excluding normal battery depletion) with 95% confidence interval, as a function of years after implant												
Years after implant	1	2	3	4	5	6	7	8	9	10	11	12
Cumulative survival from malfunction in %	99.96	99.9	99.9	99.9	99.9	99.9	99.88	99.86	99.86	99.86	99.86	99.86
Upper confidence interval (+) in %	0.03	0.06	0.06	0.06	0.06	0.06	0.07	0.08	0.08	0.08	0.08	0.08
Lower confidence interval (-) in %	0.11	0.14	0.14	0.14	0.14	0.14	0.15	0.16	0.16	0.16	0.16	0.16

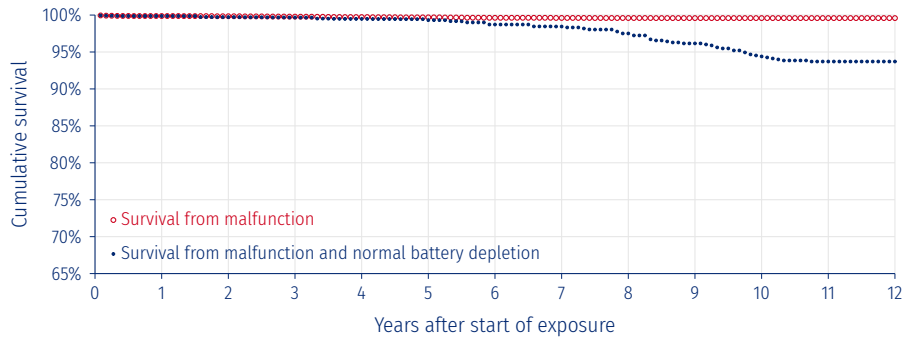
A Field Safety Notice was issued for Ovatio devices. Please refer to Section 6.1.4, pp. 56-59.

4.1 Implantable Cardioverter Defibrillators (ICDs)

« Go back to [Table of Contents](#)

4.1.5 Paradym DR 8550

Paradym DR 8550



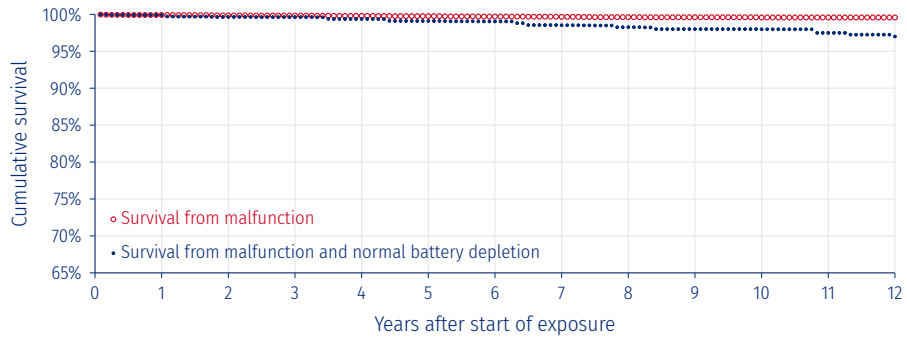
Cutoff date	30-Jun-2025	Worldwide implants	9850	Worldwide malfunctions	37
Market release date	Nov-2007	Estimated active implants	7600	- Devices with compromised therapy	16
Analysis stopped at 144 months		Estimated normal battery depletion	489	- Devices without compromised therapy	21

Cumulative survival from malfunction (excluding normal battery depletion) with 95% confidence interval, as a function of years after implant												
Years after implant	1	2	3	4	5	6	7	8	9	10	11	12
Cumulative survival from malfunction in %	99.87	99.84	99.79	99.73	99.69	99.63	99.61	99.6	99.59	99.59	99.59	99.59
Upper confidence interval (+) in %	0.06	0.06	0.08	0.09	0.1	0.11	0.11	0.11	0.11	0.11	0.11	0.11
Lower confidence interval (-) in %	0.1	0.1	0.12	0.13	0.14	0.15	0.15	0.15	0.16	0.16	0.16	0.16

Field Safety Notices were issued for Paradym devices. Please refer to Sections 6.1.1 to 6.1.4, pp. 53-59.

4.1.6 Paradym VR 8250

Paradym VR 8250



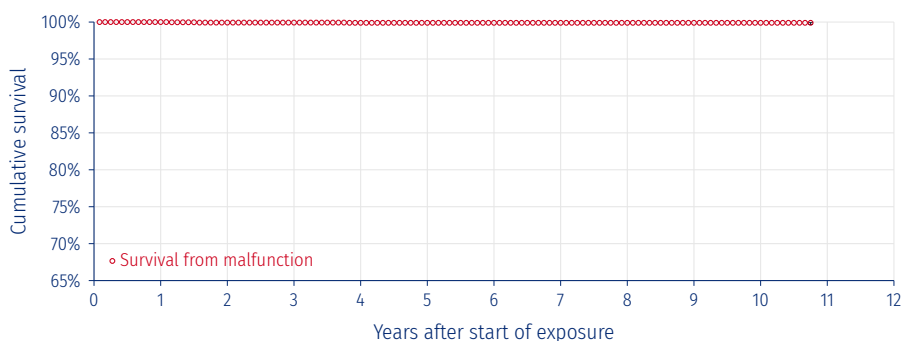
Cutoff date	30-Jun-2025	Worldwide implants	5878	Worldwide malfunctions	22
Market release date	Jun-2008	Estimated active implants	4636	- Devices with compromised therapy	8
Analysis stopped at 144 months		Estimated normal battery depletion	121	- Devices without compromised therapy	14

Cumulative survival from malfunction (excluding normal battery depletion) with 95% confidence interval, as a function of years after implant												
Years after implant	1	2	3	4	5	6	7	8	9	10	11	12
Cumulative survival from malfunction in %	99.91	99.86	99.84	99.8	99.76	99.7	99.66	99.62	99.6	99.57	99.57	99.57
Upper confidence interval (+) in %	0.05	0.07	0.08	0.09	0.1	0.12	0.13	0.14	0.14	0.15	0.15	0.15
Lower confidence interval (-) in %	0.12	0.14	0.15	0.16	0.17	0.19	0.2	0.21	0.22	0.22	0.22	0.22

Field Safety Notices were issued for Paradym devices. Please refer to Sections 6.1.1 to 6.1.4, pp. 53-59.

4.1.7 Paradym 2 DR 8552 - VR 8252

Paradym 2 DR 8552
Paradym 2 VR 8252



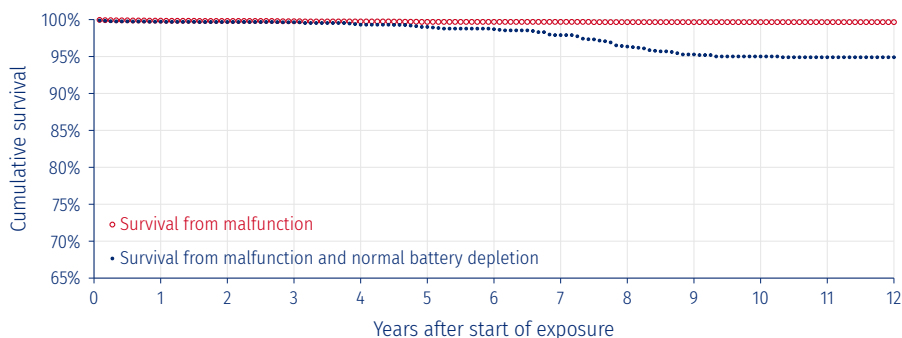
Cutoff date	30-Jun-2025	Worldwide implants	3184	Worldwide malfunctions	3
Market release date	Jun-2013	Estimated active implants	2278	- Devices with compromised therapy	2
Analysis stopped at 129 months due to < 50 exposed devices		Estimated normal battery depletion	N/A	- Devices without compromised therapy	1

Cumulative survival from malfunction (excluding normal battery depletion) with 95% confidence interval, as a function of years after implant												
Years after implant	1	2	3	4	5	6	7	8	9	10	11	12
Cumulative survival from malfunction in %	100	99.93	99.93	99.9	99.9	99.9	99.9	99.9	99.9	99.9	99.9	99.9
Upper confidence interval (+) in %	0	0.05	0.05	0.07	0.07	0.07	0.07	0.07	0.07	0.07	0.07	0.07
Lower confidence interval (-) in %	0	0.2	0.2	0.22	0.22	0.22	0.22	0.22	0.22	0.22	0.22	0.22

A Field Safety Notice was issued for Paradym 2 devices. Please refer to Section 6.1.4, pp. 56-59.

4.1.8 Paradym RF DR 9550

Paradym RF DR 9550



Cutoff date	30-Jun-2025	Worldwide implants	5090	Worldwide malfunctions	16
Market release date	Sep-2010	Estimated active implants	4152	- Devices with compromised therapy	5
Analysis stopped at 144 months		Estimated normal battery depletion	207	- Devices without compromised therapy	11

Cumulative survival from malfunction (excluding normal battery depletion) with 95% confidence interval, as a function of years after implant												
Years after implant	1	2	3	4	5	6	7	8	9	10	11	12
Cumulative survival from malfunction in %	99.86	99.82	99.78	99.75	99.69	99.69	99.69	99.66	99.66	99.66	99.66	99.66
Upper confidence interval (+) in %	0.07	0.09	0.1	0.11	0.12	0.12	0.12	0.13	0.13	0.13	0.13	0.13
Lower confidence interval (-) in %	0.15	0.17	0.18	0.19	0.21	0.21	0.21	0.21	0.21	0.21	0.21	0.21

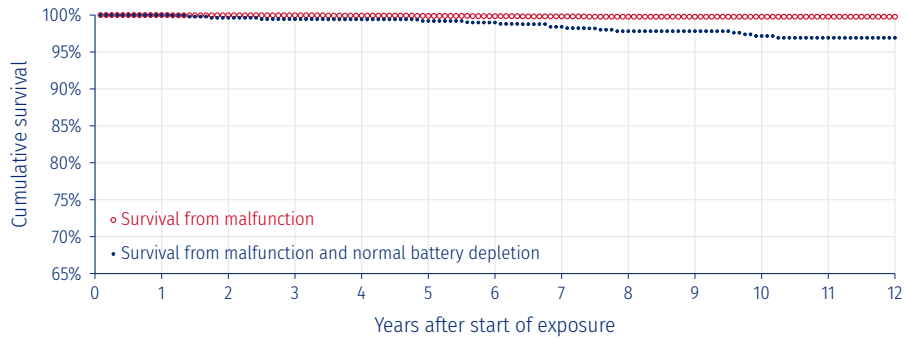
A Field Safety Notice was issued for Paradym RF devices. Please refer to Section 6.1.4, pp. 56-59.

4.1 Implantable Cardioverter Defibrillators (ICDs)

« Go back to [Table of Contents](#)

4.1.9 Paradym RF VR 9250

Paradym RF VR 9250



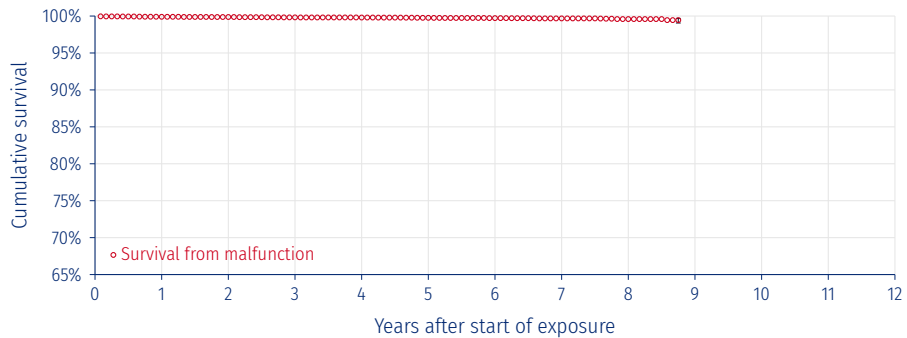
Cutoff date	30-Jun-2025	Worldwide implants	3126	Worldwide malfunctions	6
Market release date	Sep-2010	Estimated active implants	2636	- Devices with compromised therapy	3
Analysis stopped at 144 months		Estimated normal battery depletion	75	- Devices without compromised therapy	3

Cumulative survival from malfunction (excluding normal battery depletion) with 95% confidence interval, as a function of years after implant												
Years after implant	1	2	3	4	5	6	7	8	9	10	11	12
Cumulative survival from malfunction in %	100	99.97	99.97	99.93	99.89	99.86	99.82	99.78	99.78	99.78	99.78	99.78
Upper confidence interval (+) in %	0	0.03	0.03	0.05	0.07	0.09	0.1	0.12	0.12	0.12	0.12	0.12
Lower confidence interval (-) in %	0	0.2	0.2	0.21	0.22	0.24	0.25	0.26	0.26	0.26	0.26	0.26

A Field Safety Notice was issued for Paradym RF devices. Please refer to Section 6.1.4, pp. 56-59.

4.1.10 Platinum DR 1510/1540 - VR 1210/1240

Platinum DR 1510
Platinum DR 1540
Platinum VR 1210
Platinum VR 1240



Cutoff date	30-Jun-2025	Worldwide implants	21576	Worldwide malfunctions	61
Market release date	May-2015	Estimated active implants	17232	- Devices with compromised therapy	31
Analysis stopped at 105 months due to < 50 exposed devices		Estimated normal battery depletion	N/A	- Devices without compromised therapy	30

Cumulative survival from malfunction (excluding normal battery depletion) with 95% confidence interval, as a function of years after implant									
Years after implant	1	2	3	4	5	6	7	8	9
Cumulative survival from malfunction in %	99.9	99.87	99.82	99.8	99.76	99.72	99.68	99.59	
Upper confidence interval (+) in %	0.03	0.04	0.05	0.05	0.06	0.07	0.08	0.11	
Lower confidence interval (-) in %	0.05	0.06	0.07	0.07	0.08	0.09	0.1	0.15	

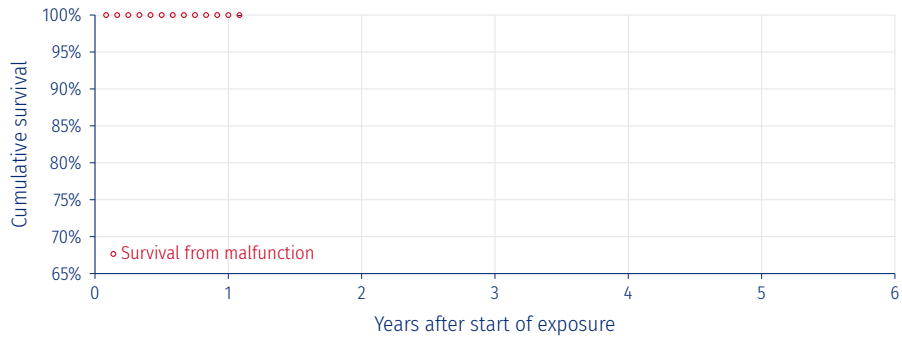
Field Safety Notices were issued for Platinum devices. Please refer to Sections 6.1.5 to 6.1.9, pp. 60-69.

4.1 Implantable Cardioverter Defibrillators (ICDs)

« Go back to [Table of Contents](#)

4.1.11 TALENTIA DR - VR

TALENTIA DR 3510
TALENTIA DR 3540
TALENTIA VR 3210
TALENTIA VR 3240

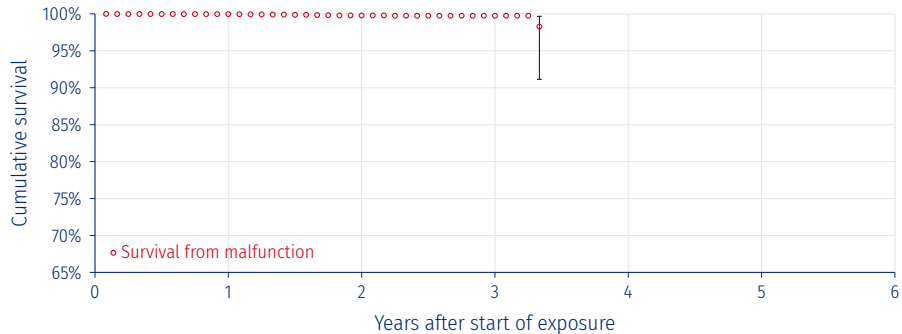


Cutoff date	30-Jun-2025	Worldwide implants	2435	Worldwide malfunctions	0
Market release date	Apr-2024	Estimated active implants	2361	- Devices with compromised therapy	0
Analysis stopped at 13 months due to < 50 exposed devices		Estimated normal battery depletion	N/A	- Devices without compromised therapy	0

Cumulative survival from malfunction (excluding normal battery depletion) with 95% confidence interval, as a function of years after implant						
Years after implant	1	2	3	4	5	6
Cumulative survival from malfunction in %	100	100	100	100	100	68
Upper confidence interval (+) in %	0	0	0	0	0	0
Lower confidence interval (-) in %	0	0	0	0	0	0

4.1.12 ULYS

ULYS VR 2210
ULYS VR 2240
ULYS DR 2510
ULYS DR 2540



Cutoff date	30-Jun-2025	Worldwide implants	6429	Worldwide malfunctions	11
Market release date	Jul-2021	Estimated active implants	5903	- Devices with compromised therapy	3
Analysis stopped at 40 months due to < 50 exposed devices		Estimated normal battery depletion	N/A	- Devices without compromised therapy	8

Cumulative survival from malfunction (excluding normal battery depletion) with 95% confidence interval, as a function of years after implant						
Years after implant	1	2	3	4	5	6
Cumulative survival from malfunction in %	99.97	99.79	99.75	98	98	98
Upper confidence interval (+) in %	0.02	0.1	0.12	0.12	0.12	0.12
Lower confidence interval (-) in %	0.1	0.2	0.23	0.23	0.23	0.23

4.1 Implantable Cardioverter Defibrillators (ICDs)

[« Go back to Table of Contents](#)

4.1.13 Implantable Cardioverter Defibrillators (ICDs) synopsis

The table presented below summarizes device information:

Models	Family	Market release date	Worldwide implants	Estimated active implants	Estimated normal batt. depletion	Worldwide malfunctions	Devices with compromised therapy	Devices without compromised therapy
EDIS DR 2410	EDIS	Jul-21	2203	2051	-	1	0	1
EDIS DR 2440		Jul-21						
EDIS VR 2110		Jul-21						
EDIS VR 2140		Jul-21						
Intensia DR 154	Intensia	Nov-13	1609	1209	-	3	1	2
Intensia VR 124		Nov-13						
Ovatio DR 6550	Ovatio	May-05	11461	7440	1922	16	14	2
Ovatio VR 6250	Ovatio	May-05	5494	3746	405	7	5	2
Paradym DR 8550	Paradym	Nov-07	9850	7600	489	37	16	21
Paradym VR 8250	Paradym	Jun-08	5878	4636	121	22	8	14
Paradym 2 DR 8552	Paradym 2	Jun-13	3184	2278	-	3	2	1
Paradym 2 VR 8252		Jun-13						
Paradym RF DR 9550	Paradym RF	Sep-10	5090	4152	207	16	5	11
Paradym RF VR 9250		Sep-10						
Platinum DR 1510	Platinum	May-15	21576	17232	-	61	31	30
Platinum DR 1540		May-15						
Platinum VR 1210		May-15						
Platinum VR 1240		May-15						
TALENTIA DR 3510	TALENTIA	Apr-24	2435	2361	-	0	0	0
TALENTIA DR 3540		Apr-24						
TALENTIA VR 3210		Apr-24						
TALENTIA VR 3240		Apr-24						
ULYS DR 2510	ULYS	Jul-21	6429	5903	-	11	3	8
ULYS DR 2540		Jul-21						
ULYS VR 2210		Jul-21						
ULYS VR 2240		Jul-21						

4.1 Implantable Cardioverter Defibrillators (ICDs)

[« Go back to Table of Contents](#)

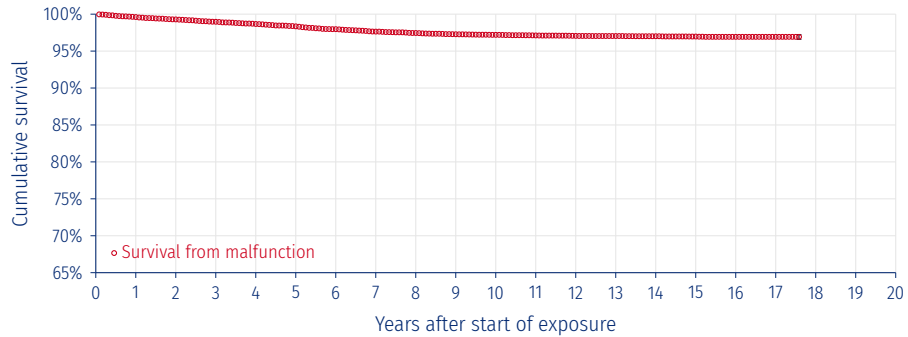
The table presented below summarizes cumulative survival probability from malfunction:

Models	Family	Cumulative survival from malfunction (%) as a function of years after implant											
		1	2	3	4	5	6	7	8	9	10	11	12
EDIS DR 2410	EDIS	100	99.95	99.95									
EDIS DR 2440													
EDIS VR 2110													
EDIS VR 2140													
Intensia DR 154		Intensia	99.94	99.87	99.87	99.87	99.8	99.8	99.8	99.8	99.8	99.8	
Intensia VR 124													
Ovatio DR 6550	Ovatio	99.96	99.94	99.93	99.9	99.89	99.89	99.88	99.84	99.84	99.84	99.84	99.84
Ovatio VR 6250	Ovatio	99.96	99.9	99.9	99.9	99.9	99.9	99.88	99.86	99.86	99.86	99.86	99.86
Paradym DR 8550	Paradym	99.87	99.84	99.79	99.73	99.69	99.63	99.61	99.6	99.59	99.59	99.59	99.59
Paradym VR 8250	Paradym	99.91	99.86	99.84	99.8	99.76	99.7	99.66	99.62	99.6	99.57	99.57	99.57
Paradym 2 DR 8552	Paradym 2	100	99.93	99.93	99.9	99.9	99.9	99.9	99.9	99.9	99.9		
Paradym 2 VR 8252													
Paradym RF DR 9550	Paradym RF	99.86	99.82	99.78	99.75	99.69	99.69	99.69	99.66	99.66	99.66	99.66	99.66
Paradym RF VR 9250	Paradym RF	100	99.97	99.97	99.93	99.89	99.86	99.82	99.78	99.78	99.78	99.78	99.78
Platinum DR 1510	Platinum	99.9	99.87	99.82	99.8	99.76	99.72	99.68	99.59				
Platinum DR 1540													
Platinum VR 1210													
Platinum VR 1240													
TALENTIA DR 3510		TALENTIA	100										
TALENTIA DR 3540													
TALENTIA VR 3210													
TALENTIA VR 3240													
ULYS DR 2510	ULYS		99.97	99.79	99.75								
ULYS DR 2540													
ULYS VR 2210													
ULYS VR 2240													

4.2 Defibrillation leads

4.2.1 Isoline

Isoline 2CR5
Isoline 2CR6
Isoline 2CT6



Cutoff date	30-Jun-2025	Worldwide implants	13446	Worldwide malfunctions	351
Market release date	Dec-2005	Estimated active implants	10322	- Devices with compromised therapy	277
Analysis stopped at 211 months due to < 50 exposed devices				- Devices without compromised therapy	74

Cumulative survival from malfunction with 95% confidence interval, as a function of years after implant																				
Years after implant	1	2	3	4	5	6	7	8	9	10	11	12	13	14	15	16	17	18	19	20
Cumulative survival from malfunction in %	99.61	99.29	98.97	98.67	98.35	97.97	97.64	97.45	97.28	97.2	97.12	97.06	97.04	97.01	96.97	96.93	96.93			
Upper confidence interval (+) in %	0.09	0.13	0.16	0.19	0.21	0.24	0.26	0.27	0.28	0.29	0.29	0.29	0.29	0.3	0.3	0.3	0.3			
Lower confidence interval (-) in %	0.12	0.16	0.2	0.22	0.24	0.27	0.29	0.3	0.31	0.32	0.32	0.32	0.33	0.33	0.33	0.33	0.33			

Lead malfunctions	Lead malfunctions		Lead complications		Acute lead complications	Chronic lead complications
	Without compromised therapy	With compromised therapy	Without compromised therapy	With compromised therapy		
Conductor Fracture	0	10	Abnormal Defibrillation Impedance		1	24
Crimps, Welds, and Bonds	0	1	Abnormal Pacing Impedance		0	12
Insulation Breach	1	74	Cardiac Perforation		0	1
Other	0	0	Conductor Fracture		0	5
			Extracardiac Stimulation		0	0
			Failure to Capture		2	15
			Failure to Sense (undersensing)		1	2
			Insulation Breach		0	3
			Lead Dislodgement		7	5
			Other		0	0
			Oversensing		5	200
All lead malfunctions	1	85	All lead complications		16	267

Note: the above survival curve only accounts for Lead malfunctions and Chronic lead complications; it does not include Acute lead complications, in accordance with the international standard ISO 5841-2.

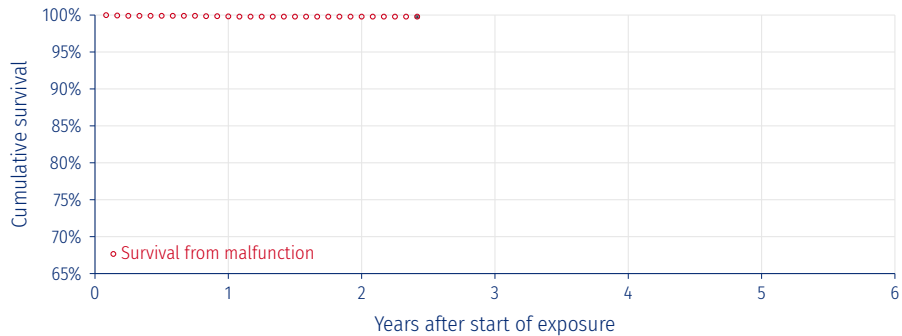
Field Safety Notices were issued for Isoline leads. Please refer to Sections 6.3.1 to 6.3.2, pp. 81-84.

4.2 Defibrillation leads

« Go back to [Table of Contents](#)

4.2.2 Invicta

INVICTA 1CR58
INVICTA 1CR68
INVICTA 2CR58
INVICTA 2CR68



Cutoff date	30-Jun-2025	Worldwide implants	7739	Worldwide malfunctions	13
Market release date	Jul-2022	Estimated active implants	7149	- Devices with compromised therapy	4
Analysis stopped at 29 months due to < 50 exposed devices				- Devices without compromised therapy	9

Cumulative survival from malfunction with 95% confidence interval, as a function of years after implant						
Years after implant	1	2	3	4	5	6
Cumulative survival from malfunction in %	99.82	99.79				
Upper confidence interval (+) in %	0.08	0.09				
Lower confidence interval (-) in %	0.16	0.18				

Lead malfunctions	Lead malfunctions		Lead complications	Acute lead complications	Chronic lead complications
	Without compromised therapy	With compromised therapy			
Conductor Fracture	0	1	Conductor Fracture	0	0
Crimps, Welds, and Bonds	1	1	Extracardiac Stimulation	0	0
Insulation Breach	0	0	Failure to Capture	8	4
Other	0	1	Failure to Sense (undersensing)	1	1
All lead malfunctions	1	3	Insulation Breach	0	0
			Lead Dislodgement	42	1
			Other	2	0
			Oversensing	5	4
			All lead complications	66	11

Note: the above survival curve only accounts for Lead malfunctions and Chronic lead complications; it does not include Acute lead complications, in accordance with the international standard ISO 5841-2.

4.2.3 Vigila 1CR - 1CT - 2CR - 2CT

The Vigila lead models are reported in Biotronik's Product Performance Report⁶, provided that they reach the inclusion criteria (Refer to the Vigila and Linx sections).

4.2.4 Volta 1CR - 1CT - 2CR - 2CT

The Volta lead models are/will be reported in Biotronik's Product Performance Report⁶, provided that they reach the inclusion criteria (Refer to the Volta and Linx smart sections).

⁶ Biotronik's PPR document is available on Biotronik's website at: <https://www.biotronik.com/en-gb/healthcare-professionals/product-performance-report>

4.2 Defibrillation leads

[« Go back to Table of Contents](#)

4.2.5 Defibrillation leads synopsis

The table presented below summarizes device information:

Models	Family	Market release date	Worldwide implants	Estimated active implants	Worldwide malfunctions	Devices with compromised therapy	Devices without compromised therapy	Devices returned and analyzed
Isoline 2CR5	Isoline	Dec-05	13446	10322	351	277	74	276
Isoline 2CR6		Dec-05						
Isoline 2CT6		Dec-05						
INVICTA 1CR58	Invicta	Jul-22	7739	7149	13	4	9	N/A*
INVICTA 1CR68		Jul-22						
INVICTA 2CR58		Jul-22						
INVICTA 2CR68		Jul-22						

*Only available for our most recent models

The table presented below summarizes cumulative survival probability from malfunction:

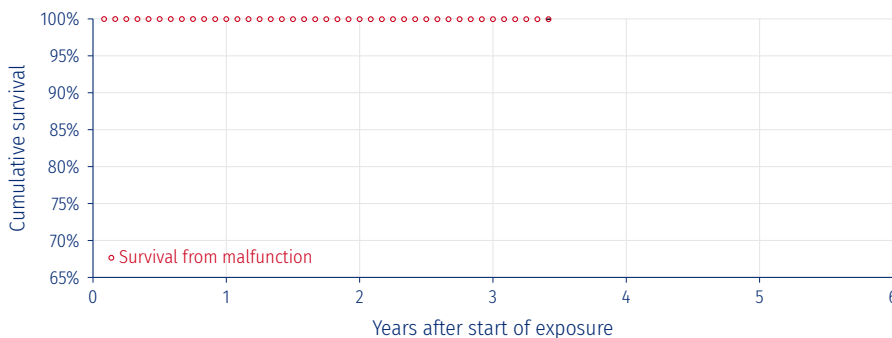
Models	Family	Cumulative survival from malfunction (%) as a function of years after implant																					
		1	2	3	4	5	6	7	8	9	10	11	12	13	14	15	16	17	18	19	20		
Isoline 2CR5	Isoline	99.61	99.29	98.97	98.67	98.35	97.97	97.64	97.45	97.28	97.2	97.12	97.06	97.04	97.01	96.97	96.93	96.93					
Isoline 2CR6																							
Isoline 2CT6																							
INVICTA 1CR58	Invicta	99.82	99.79																				
INVICTA 1CR68																							
INVICTA 2CR58																							
INVICTA 2CR68																							

5 Bradycardia therapy

5.1 Pacemakers

5.1.1 ALIZEA

ALIZEA DR 1600
ALIZEA SR 1300



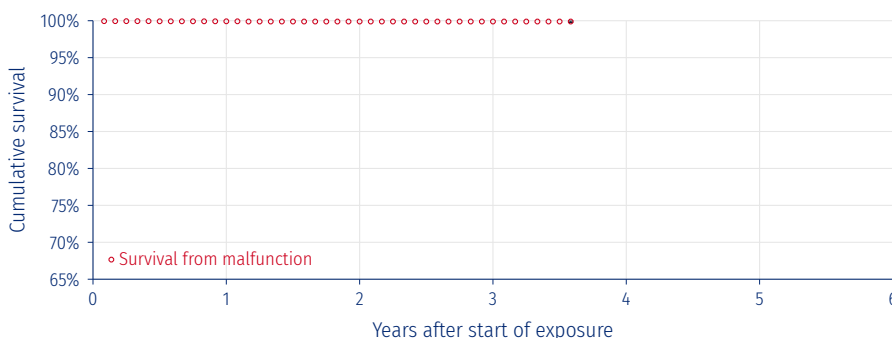
Cutoff date	30-Jun-2025	Worldwide implants	38820	Worldwide malfunctions	13
Market release date	Jan-2021	Estimated active implants	36498	- Devices with compromised therapy	0
Analysis stopped at 41 months due to < 50 exposed devices		Estimated normal battery depletion	N/A	- Devices without compromised therapy	15

Cumulative survival from malfunction (excluding normal battery depletion) with 95% confidence interval, as a function of years after implant

Years after implant	1	2	3	4	5	6
Cumulative survival from malfunction in %	99.97	99.96	99.96			
Upper confidence interval (+) in %	0.01	0.02	0.02			
Lower confidence interval (-) in %	0.03	0.03	0.03			

5.1.2 BOREA

BOREA DR 1500
BOREA SR 1200



Cutoff date	30-Jun-2025	Worldwide implants	6598	Worldwide malfunctions	6
Market release date	Jan-2021	Estimated active implants	6165	- Devices with compromised therapy	0
Analysis stopped at 43 months due to < 50 exposed devices		Estimated normal battery depletion	N/A	- Devices without compromised therapy	6

Cumulative survival from malfunction (excluding normal battery depletion) with 95% confidence interval, as a function of years after implant

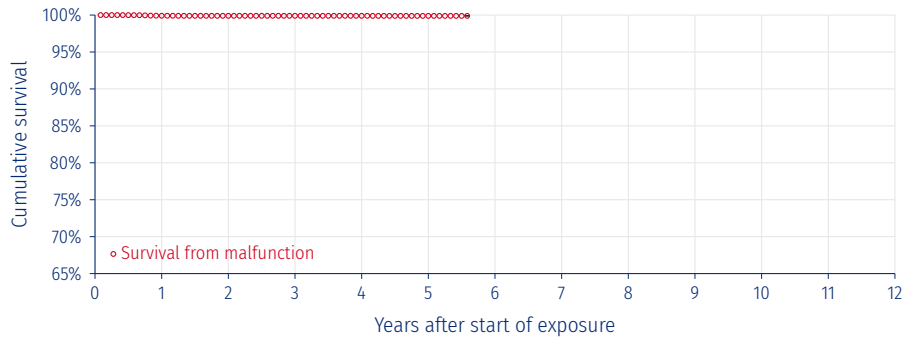
Years after implant	1	2	3	4	5	6
Cumulative survival from malfunction in %	99.92	99.89	99.89			
Upper confidence interval (+) in %	0.05	0.06	0.06			
Lower confidence interval (-) in %	0.11	0.14	0.14			

5.1 Pacemakers

[« Go back to Table of Contents](#)

5.1.3 ENO

ENO DR
ENO SR

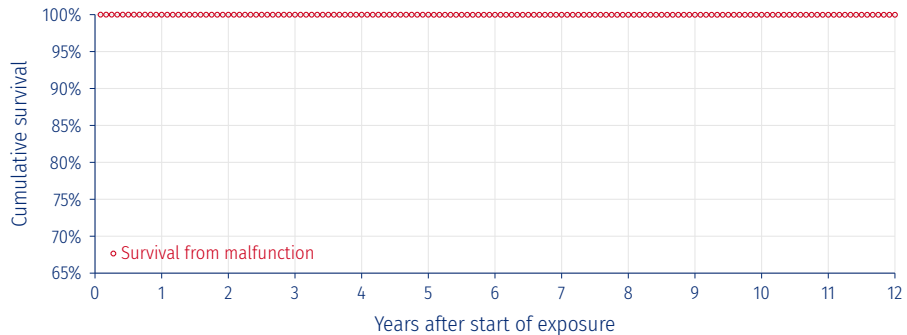


Cutoff date	30-Jun-2025	Worldwide implants	112671	Worldwide malfunctions	100
Market release date	Dec-2018	Estimated active implants	100844	- Devices with compromised therapy	8
Analysis stopped at 67 months due to < 50 exposed devices		Estimated normal battery depletion	N/A	- Devices without compromised therapy	93

Cumulative survival from malfunction (excluding normal battery depletion) with 95% confidence interval, as a function of years after implant												
Years after implant	1	2	3	4	5	6	7	8	9	10	11	12
Cumulative survival from malfunction in %	99.91	99.9	99.9	99.9	99.89							
Upper confidence interval (+) in %	0.02	0.02	0.02	0.02	0.02							
Lower confidence interval (-) in %	0.02	0.02	0.02	0.02	0.02							

5.1.4 Esprit

Esprit D
Esprit DR
Esprit S
Esprit SR



Cutoff date	30-Jun-2025	Worldwide implants	158775	Worldwide malfunctions	24
Market release date	Jan-2009	Estimated active implants	125186	- Devices with compromised therapy	9
Analysis stopped at 144 months		Estimated normal battery depletion	N/A	- Devices without compromised therapy	15

Cumulative survival from malfunction (excluding normal battery depletion) with 95% confidence interval, as a function of years after implant												
Years after implant	1	2	3	4	5	6	7	8	9	10	11	12
Cumulative survival from malfunction in %	99.99	99.99	99.99	99.99	99.99	99.98	99.98	99.98	99.98	99.98	99.98	99.98
Upper confidence interval (+) in %	0	0	0	0	0.01	0.01	0.01	0.01	0.01	0.01	0.01	0.01
Lower confidence interval (-) in %	0.01	0.01	0.01	0.01	0.01	0.01	0.01	0.01	0.01	0.01	0.01	0.01

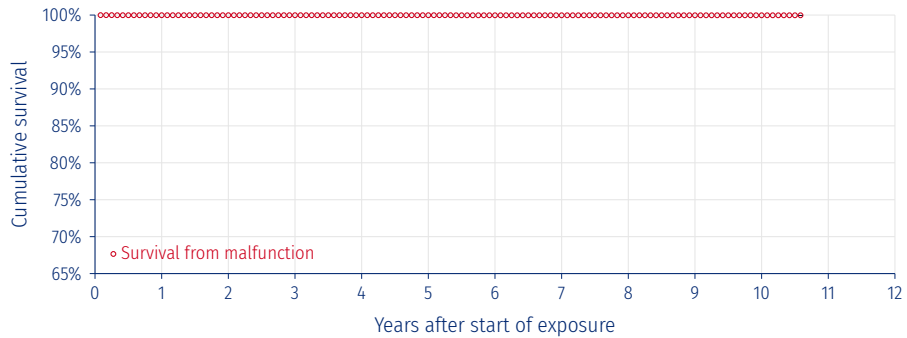
Field Safety Notices were issued for Esprit devices. Please refer to Sections 6.2.3 to 6.2.5, pp. 72-79.

5.1 Pacemakers

« Go back to [Table of Contents](#)

5.1.5 Kora 100

Kora 100 DR
Kora 100 SR



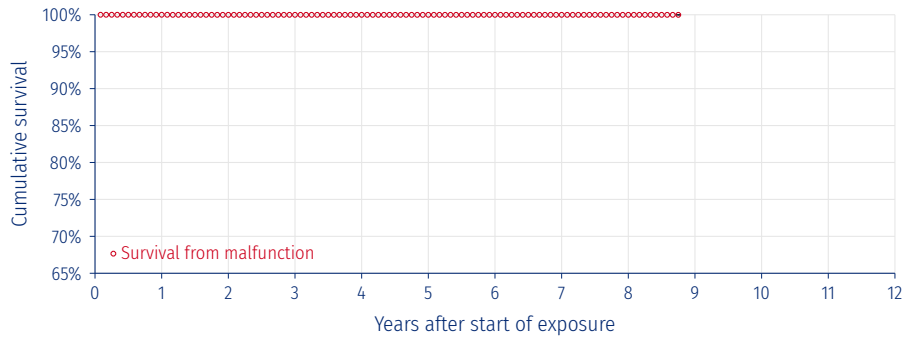
Cutoff date	30-Jun-2025	Worldwide implants	53308	Worldwide malfunctions	13
Market release date	Nov-2013	Estimated active implants	43726	- Devices with compromised therapy	7
Analysis stopped at 127 months due to < 50 exposed devices		Estimated normal battery depletion	N/A	- Devices without compromised therapy	6

Cumulative survival from malfunction (excluding normal battery depletion) with 95% confidence interval, as a function of years after implant												
Years after implant	1	2	3	4	5	6	7	8	9	10	11	12
Cumulative survival from malfunction in %	99.98	99.98	99.98	99.98	99.98	99.97	99.97	99.97	99.97	99.97		
Upper confidence interval (+) in %	0.01	0.01	0.01	0.01	0.01	0.01	0.01	0.01	0.01	0.01		
Lower confidence interval (-) in %	0.02	0.02	0.02	0.02	0.02	0.02	0.02	0.02	0.02	0.02		

A Field Safety Notice was issued for Kora devices. Please refer to Section 6.2.5, pp. 75-79.

5.1.6 Kora 250

Kora 250 DR
Kora 250 SR



Cutoff date	30-Jun-2025	Worldwide implants	159396	Worldwide malfunctions	17
Market release date	Feb-2015	Estimated active implants	133470	- Devices with compromised therapy	7
Analysis stopped at 105 months due to < 50 exposed devices		Estimated normal battery depletion	N/A	- Devices without compromised therapy	10

Cumulative survival from malfunction (excluding normal battery depletion) with 95% confidence interval, as a function of years after implant												
Years after implant	1	2	3	4	5	6	7	8	9	10	11	12
Cumulative survival from malfunction in %	100	99.99	99.99	99.99	99.99	99.99	99.99	99.99	99.99			
Upper confidence interval (+) in %	0	0	0	0	0	0	0	0	0			
Lower confidence interval (-) in %	0	0.01	0.01	0.01	0.01	0.01	0.01	0.01	0.01			

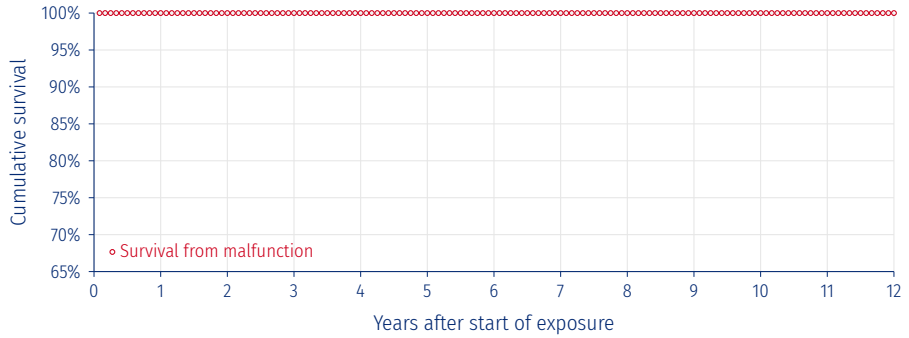
A Field Safety Notice was issued for Kora devices. Please refer to Section 6.2.5, pp. 75-79.

5.1 Pacemakers

[« Go back to Table of Contents](#)

5.1.7 NewLiving

NewLiving CHF
NewLiving DR
NewLiving SR

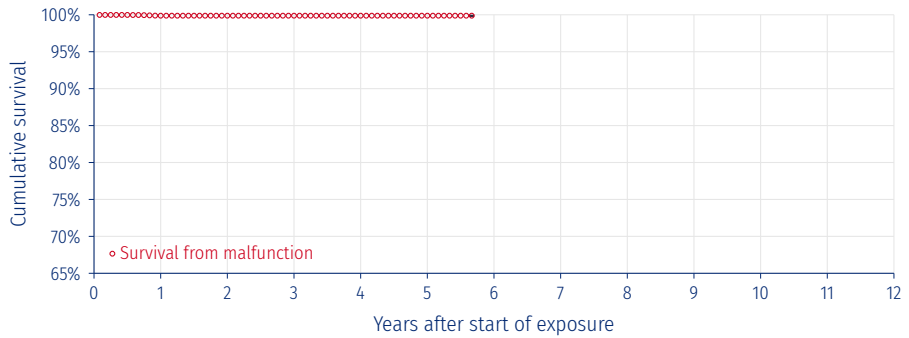


Cutoff date	30-Jun-2025	Worldwide implants	726	Worldwide malfunctions	0
Market release date	Dec-2004	Estimated active implants	577	- Devices with compromised therapy	0
Analysis stopped at 144 months		Estimated normal battery depletion	N/A	- Devices without compromised therapy	0

Cumulative survival from malfunction (excluding normal battery depletion) with 95% confidence interval, as a function of years after implant												
Years after implant	1	2	3	4	5	6	7	8	9	10	11	12
Cumulative survival from malfunction in %	100	100	100	100	100	100	100	100	100	100	100	100
Upper confidence interval (+) in %	0	0	0	0	0	0	0	0	0	0	0	0
Lower confidence interval (-) in %	0	0	0	0	0	0	0	0	0	0	0	0

5.1.8 OTO

OTO DR
OTO SR

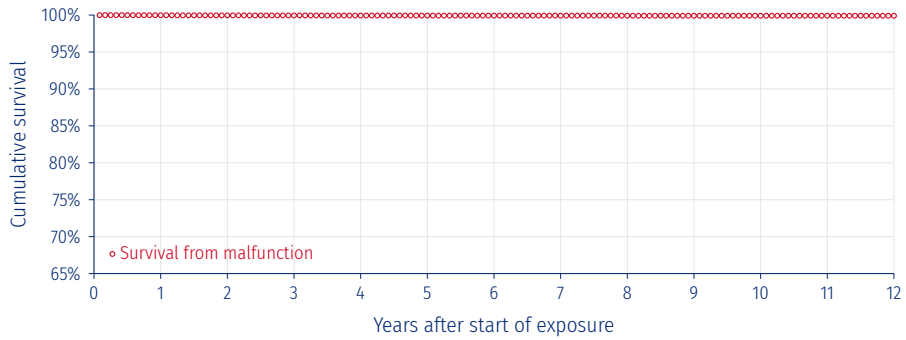


Cutoff date	30-Jun-2025	Worldwide implants	11739	Worldwide malfunctions	12
Market release date	Dec-2018	Estimated active implants	10647	- Devices with compromised therapy	0
Analysis stopped at 69 months due to < 50 exposed devices		Estimated normal battery depletion	N/A	- Devices without compromised therapy	12

Cumulative survival from malfunction (excluding normal battery depletion) with 95% confidence interval, as a function of years after implant												
Years after implant	1	2	3	4	5	6	7	8	9	10	11	12
Cumulative survival from malfunction in %	99.88	99.88	99.88	99.88	99.88							
Upper confidence interval (+) in %	0.05	0.05	0.05	0.05	0.05							
Lower confidence interval (-) in %	0.09	0.09	0.09	0.09	0.09							

5.1.9 Reply D - VDR - Facil DR

Reply D
Reply VDR
Facil DR



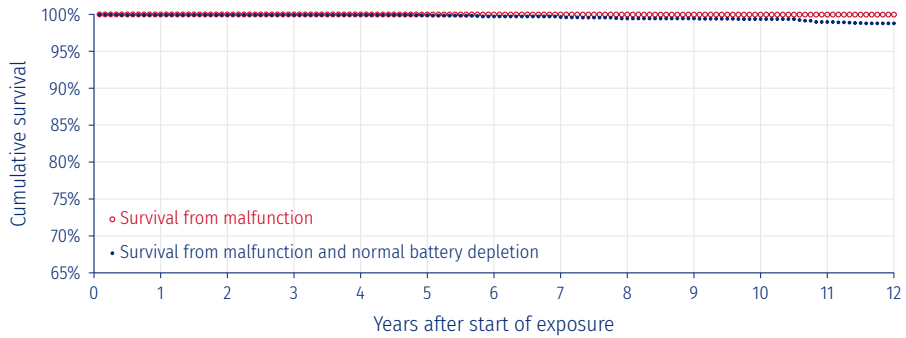
Cutoff date	30-Jun-2025	Worldwide implants	35358	Worldwide malfunctions	28
Market release date	Apr-2007	Estimated active implants	28166	- Devices with compromised therapy	6
Analysis stopped at 144 months		Estimated normal battery depletion	N/A	- Devices without compromised therapy	22

Cumulative survival from malfunction (excluding normal battery depletion) with 95% confidence interval, as a function of years after implant												
Years after implant	1	2	3	4	5	6	7	8	9	10	11	12
Cumulative survival from malfunction in %	99.98	99.96	99.95	99.94	99.93	99.93	99.93	99.91	99.91	99.91	99.91	99.91
Upper confidence interval (+) in %	0.01	0.02	0.02	0.02	0.02	0.02	0.02	0.03	0.03	0.03	0.03	0.03
Lower confidence interval (-) in %	0.02	0.03	0.03	0.03	0.03	0.04	0.04	0.04	0.04	0.04	0.04	0.04

Field Safety Notices were issued for Reply devices. Please refer to Sections 6.2.1 to 6.2.5, pp. 70-79.

5.1.10 Reply SR

Reply SR



Cutoff date	30-Jun-2025	Worldwide implants	65022	Worldwide malfunctions	15
Market release date	Apr-2007	Estimated active implants	49825	- Devices with compromised therapy	2
Analysis stopped at 144 months		Estimated normal battery depletion	564	- Devices without compromised therapy	13

Cumulative survival from malfunction (excluding normal battery depletion) with 95% confidence interval, as a function of years after implant												
Years after implant	1	2	3	4	5	6	7	8	9	10	11	12
Cumulative survival from malfunction in %	99.99	99.99	99.99	99.99	99.98	99.98	99.98	99.98	99.97	99.97	99.97	99.97
Upper confidence interval (+) in %	0.01	0.01	0.01	0.01	0.01	0.01	0.01	0.01	0.01	0.01	0.01	0.01
Lower confidence interval (-) in %	0.01	0.01	0.01	0.01	0.01	0.02	0.02	0.02	0.02	0.02	0.02	0.02

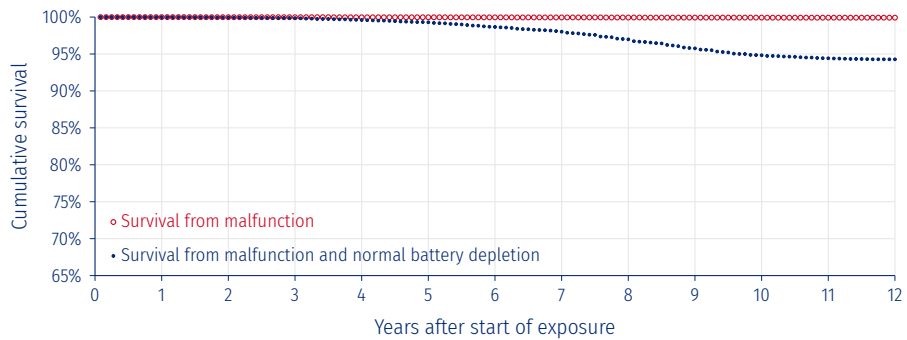
Field Safety Notices were issued for Reply devices. Please refer to Sections 6.2.1 to 6.2.5, pp. 70-79.

5.1 Pacemakers

[« Go back to Table of Contents](#)

5.1.11 Reply DR

Reply DR



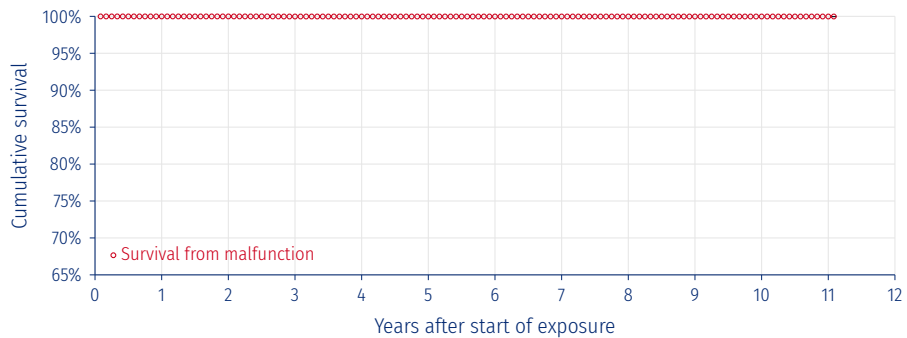
Cutoff date	30-Jun-2025	Worldwide implants	227302	Worldwide malfunctions	147
Market release date	Dec-2006	Estimated active implants	173816	- Devices with compromised therapy	34
Analysis stopped at 144 months		Estimated normal battery depletion	10054	- Devices without compromised therapy	113

Cumulative survival from malfunction (excluding normal battery depletion) with 95% confidence interval, as a function of years after implant												
Years after implant	1	2	3	4	5	6	7	8	9	10	11	12
Cumulative survival from malfunction in %	99.99	99.98	99.98	99.97	99.97	99.96	99.95	99.94	99.93	99.93	99.92	99.92
Upper confidence interval (+) in %	0	0	0.01	0.01	0.01	0.01	0.01	0.01	0.01	0.01	0.01	0.01
Lower confidence interval (-) in %	0.01	0.01	0.01	0.01	0.01	0.01	0.01	0.01	0.01	0.01	0.01	0.01

Field Safety Notices were issued for Reply devices. Please refer to Sections 6.2.1 to 6.2.5, pp. 70-79.

5.1.12 Reply 200

Reply 200 DR
Reply 200 SR



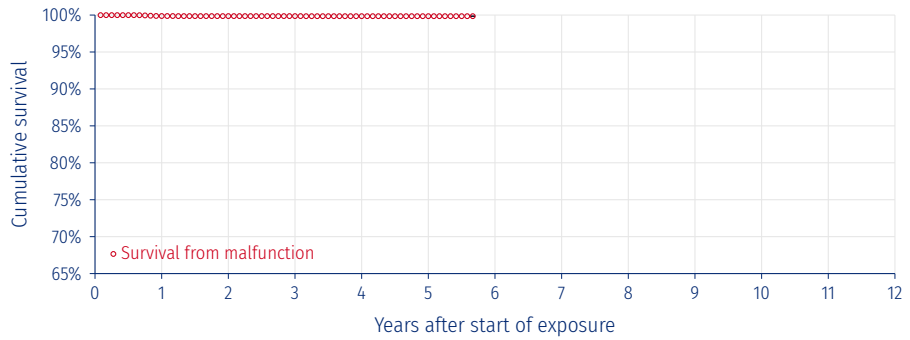
Cutoff date	30-Jun-2025	Worldwide implants	63867	Worldwide malfunctions	13
Market release date	Feb-2012	Estimated active implants	51894	- Devices with compromised therapy	7
Analysis stopped at 133 months due to < 50 exposed devices		Estimated normal battery depletion	N/A	- Devices without compromised therapy	6

Cumulative survival from malfunction (excluding normal battery depletion) with 95% confidence interval, as a function of years after implant												
Years after implant	1	2	3	4	5	6	7	8	9	10	11	12
Cumulative survival from malfunction in %	99.99	99.99	99.98	99.98	99.98	99.98	99.98	99.98	99.98	99.98	99.98	99.98
Upper confidence interval (+) in %	0.01	0.01	0.01	0.01	0.01	0.01	0.01	0.01	0.01	0.01	0.01	0.01
Lower confidence interval (-) in %	0.01	0.01	0.01	0.01	0.01	0.01	0.01	0.01	0.02	0.02	0.02	0.02

A Field Safety Notice was issued for Reply 200 devices. Please refer to Section 6.2.5, pp. 75-79.

5.1.13 TEO

TEO DR
TEO SR



Cutoff date	30-Jun-2025	Worldwide implants	47887	Worldwide malfunctions	58
Market release date	Dec-2018	Estimated active implants	43194	- Devices with compromised therapy	3
Analysis stopped at 68 months due to < 50 exposed devices		Estimated normal battery depletion	N/A	- Devices without compromised therapy	55

Cumulative survival from malfunction (excluding normal battery depletion) with 95% confidence interval, as a function of years after implant												
Years after implant	1	2	3	4	5	6	7	8	9	10	11	12
Cumulative survival from malfunction in %	99.87	99.86	99.86	99.85	99.85							
Upper confidence interval (+) in %	0.03	0.03	0.03	0.03	0.03							
Lower confidence interval (-) in %	0.04	0.04	0.04	0.04	0.04							

5.1.14 Pacemakers synopsis

The table presented below summarizes device information:

Models	Family	Market release date	Worldwide implants	Estimated active implants	Estimated normal batt. depletion	Worldwide malfunctions	Devices with compromised therapy	Devices without compromised therapy
ALIZEA DR 1600	ALIZEA	Jan-21	38820	36498	-	13	0	15
ALIZEA SR 1300		Jan-21						
BOREA DR 1500	BOREA	Jan-21	6598	6165	-	6	0	6
BOREA SR 1200		Jan-21						
ENO DR	ENO	Dec-18	112671	100844	-	100	8	93
ENO SR		Dec-18						
Esprit D	Esprit	Jan-09	158775	125186	-	24	9	15
Esprit DR		Jan-09						
Esprit S		Jan-09						
Esprit SR		Jan-09						
Kora 100 DR	Kora 100	Nov-13	53308	43726	-	13	7	6
Kora 100 SR		Nov-13						
Kora 250 DR	Kora 250	Feb-15	159396	133470	-	17	7	10
Kora 250 SR		Feb-15						
NewLiving CHF	NewLiving	Feb-05	726	577	-	0	0	0
NewLiving DR		Dec-04						
NewLiving SR		Aug-05						
OTO DR	OTO	Dec-18	11739	10647	-	12	0	12
OTO SR		Dec-18						
Facil DR	Reply	Apr-07	35358	28166	-	28	6	22
Reply D		Apr-07						
Reply VDR		Apr-07						
Reply SR	Reply	Apr-07	65022	49825	564	15	2	13
Reply DR	Reply	Dec-06	227302	173816	10054	147	34	113
Reply 200 DR	Reply 200	Feb-12	63867	51894	-	13	7	6
Reply 200 SR		Feb-12						
TEO DR	TEO	Dec-18	47887	43194	-	58	3	55
TEO SR		Dec-18						

PRODUCT PERFORMANCE REPORT
SECOND EDITION 2025

5.1 Pacemakers

[« Go back to Table of Contents](#)

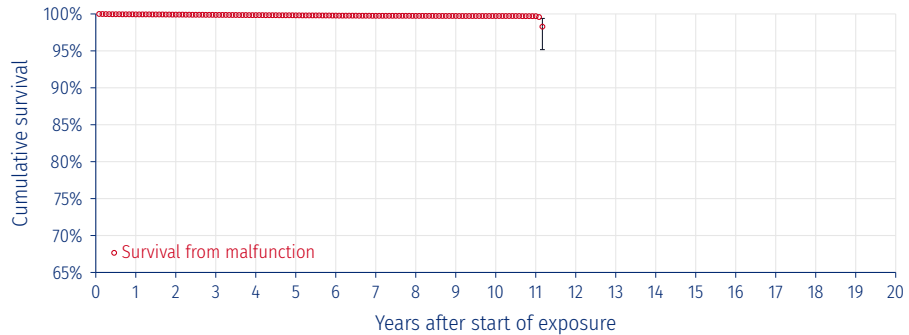
The table presented below summarizes cumulative survival probability from malfunction:

Models	Family	Cumulative survival from malfunction (%) as a function of years after implant											
		1	2	3	4	5	6	7	8	9	10	11	12
ALIZEA DR 1600	ALIZEA	99.97	99.96	99.96									
ALIZEA SR 1300													
BOREA DR 1500	BOREA	99.92	99.89	99.89									
BOREA SR 1200													
ENO DR	ENO	99.91	99.9	99.9	99.9	99.89							
ENO SR													
Esprit D	Esprit	99.99	99.99	99.99	99.99	99.99	99.98	99.98	99.98	99.98	99.98	99.98	99.98
Esprit DR													
Esprit S													
Esprit SR													
Kora 100 DR	Kora 100	99.98	99.98	99.98	99.98	99.98	99.97	99.97	99.97	99.97	99.97		
Kora 100 SR													
Kora 250 DR	Kora 250	100	99.99	99.99	99.99	99.99	99.99	99.99	99.99				
Kora 250 SR													
NewLiving CHF	NewLiving	100	100	100	100	100	100	100	100	100	100	100	100
NewLiving DR													
NewLiving SR													
OTO DR	OTO	99.88	99.88	99.88	99.88	99.88							
OTO SR													
Facil DR	Reply	99.98	99.96	99.95	99.94	99.93	99.93	99.93	99.91	99.91	99.91	99.91	99.91
Reply D													
Reply VDR													
Reply SR													
Reply DR	Reply	99.99	99.98	99.98	99.97	99.97	99.96	99.95	99.94	99.93	99.93	99.92	99.92
Reply 200 DR													
Reply 200 SR	Reply 200	99.99	99.99	99.98	99.98	99.98	99.98	99.98	99.98	99.98	99.98	99.98	
Reply 200 SR													
TEO DR	TEO	99.87	99.86	99.86	99.85	99.85							
TEO SR													

5.2 Pacing leads

5.2.1 Beflex

Beflex RF45D
Beflex RF46D



Cutoff date	30-Jun-2025	Worldwide implants	192732	Worldwide malfunctions	382
Market release date	Dec-2009	Estimated active implants	164494	- Devices with compromised therapy	237
Analysis stopped at 134 months due to < 50 exposed devices				- Devices without compromised therapy	145

Cumulative survival from malfunction with 95% confidence interval, as a function of years after implant																				
Years after implant	1	2	3	4	5	6	7	8	9	10	11	12	13	14	15	16	17	18	19	20
Cumulative survival from malfunction in %	99.94	99.91	99.87	99.84	99.81	99.78	99.75	99.74	99.73	99.72	99.7									
Upper confidence interval (+) in %	0.01	0.01	0.02	0.02	0.02	0.02	0.02	0.03	0.03	0.03	0.04									
Lower confidence interval (-) in %	0.01	0.02	0.02	0.02	0.02	0.03	0.03	0.03	0.03	0.03	0.05									

Lead malfunctions	Lead malfunctions		Lead complications		Acute lead complications	Chronic lead complications
	Without compromised therapy	With compromised therapy	Without compromised therapy	With compromised therapy		
Conductor Fracture	0	0	Conductor Fracture	0	0	0
Crimps, Welds, and Bonds	0	3	Abnormal Defibrillation Impedance	3	16	16
Insulation Breach	6	89	Abnormal Pacing Impedance	74	11	11
Other	3	0	Cardiac Perforation	0	4	4
All lead malfunctions	9	92	Conductor Fracture	0	2	2
			Extracardiac Stimulation	117	102	102
			Failure to Capture	4	4	4
			Failure to Sense (undersensing)	0	10	10
			Insulation Breach	127	23	23
			Lead Dislodgement	1	2	2
			Other	6	124	124
			Oversensing			
			All lead complications	332	298	298

Note: the above survival curve only accounts for Lead malfunctions and Chronic lead complications; it does not include Acute lead complications, in accordance with the international standard ISO 5841-2.

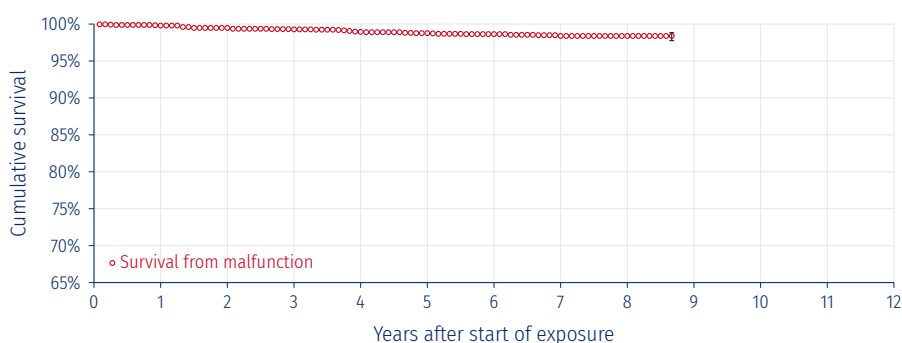
Note that the survival curve for this product includes data from leads that were involved in pre-market clinical studies.

5.2 Pacing leads

[« Go back to Table of Contents](#)

5.2.2 Petite

Petite 44 ERJB
Petite 52 ERB
Petite 52 ERJB
Petite 52 RJB
Petite 58 ERB
Petite 58 RB



Cutoff date	30-Jun-2025	Worldwide implants	2572	Worldwide malfunctions	38
Market release date	Feb-2016	Estimated active implants	2141	- Devices with compromised therapy	28
Analysis stopped at 104 months due to < 50 exposed devices				- Devices without compromised therapy	10

Cumulative survival from malfunction with 95% confidence interval, as a function of years after implant												
Years after implant	1	2	3	4	5	6	7	8	9	10	11	12
Cumulative survival from malfunction in %	99.8	99.48	99.28	98.94	98.77	98.64	98.39	98.39				
Upper confidence interval (+) in %	0.11	0.22	0.27	0.34	0.37	0.39	0.45	0.45				
Lower confidence interval (-) in %	0.27	0.37	0.42	0.49	0.52	0.55	0.63	0.63				

Lead malfunctions	Lead malfunctions		Lead complications		
	Without compromised therapy	With compromised therapy		Acute lead complications	Chronic lead complications
Conductor Fracture	0	2	Conductor Fracture	0	2
Crimps, Welds, and Bonds	0	0	Extracardiac Stimulation	0	0
Insulation Breach	0	1	Failure to Capture	4	6
Other	0	0	Failure to Sense (undersensing)	0	1
All lead malfunctions	0	3	Insulation Breach	0	2
			Lead Dislodgement	24	3
			Other	0	0
			Oversensing	0	18
			All lead complications	29	39

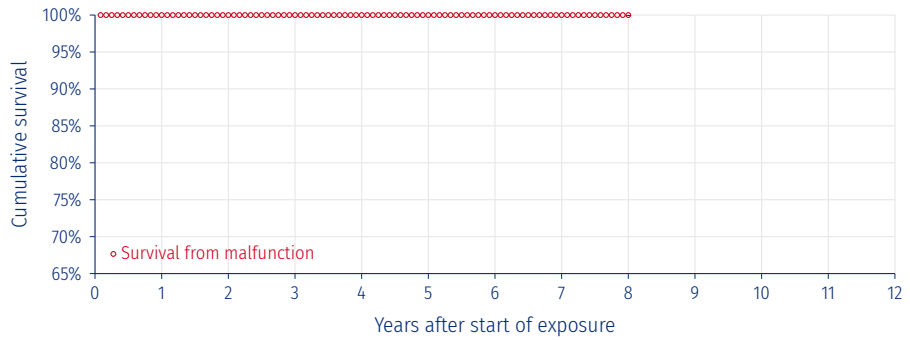
Note: the above survival curve only accounts for Lead malfunctions and Chronic lead complications; it does not include Acute lead complications, in accordance with the international standard ISO 5841-2.

5.2 Pacing leads

[« Go back to Table of Contents](#)

5.2.3 PY2

PY2 52 ENV
PY2 52 ER
PY2 52 RU
PY2 58 ENV
PY2 58 ER
PY2 58 RU



Cutoff date	30-Jun-2025	Worldwide implants	2742	Worldwide malfunctions	0
Market release date	Feb-2016	Estimated active implants	2485	- Devices with compromised therapy	0
Analysis stopped at 97 months due to < 50 exposed devices				- Devices without compromised therapy	0

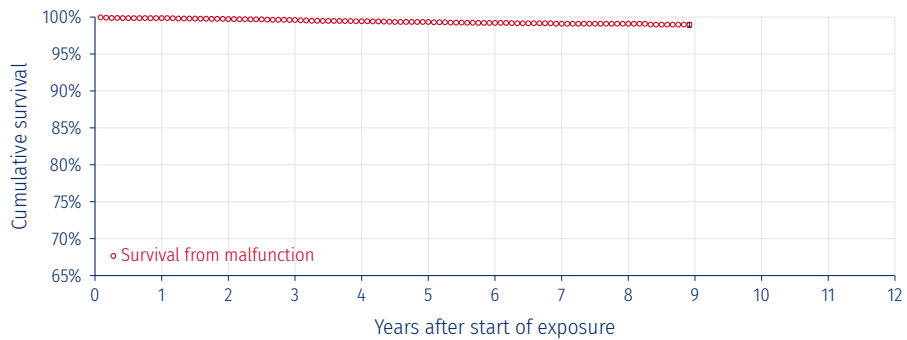
Cumulative survival from malfunction with 95% confidence interval, as a function of years after implant												
Years after implant	1	2	3	4	5	6	7	8	9	10	11	12
Cumulative survival from malfunction in %	100	100	100	100	100	100	100	100	100	100	100	100
Upper confidence interval (+) in %	0	0	0	0	0	0	0	0	0	0	0	0
Lower confidence interval (-) in %	0	0	0	0	0	0	0	0	0	0	0	0

5.2 Pacing leads

« Go back to [Table of Contents](#)

5.2.4 Screwvine

Screwvine 44
Screwvine 52
Screwvine 58



Cutoff date	30-Jun-2025	Worldwide implants	4974	Worldwide malfunctions	43
Market release date	Jun-2016	Estimated active implants	4271	- Devices with compromised therapy	33
Analysis stopped at 108 months due to < 50 exposed devices				- Devices without compromised therapy	10

Cumulative survival from malfunction with 95% confidence interval, as a function of years after implant												
Years after implant	1	2	3	4	5	6	7	8	9	10	11	12
Cumulative survival from malfunction in %	99.86	99.73	99.61	99.43	99.34	99.21	99.1	99.1				
Upper confidence interval (+) in %	0.07	0.11	0.14	0.18	0.19	0.22	0.24	0.24				
Lower confidence interval (-) in %	0.15	0.19	0.22	0.26	0.28	0.3	0.32	0.32				

Lead malfunctions	Lead malfunctions		Lead complications	Acute lead complications	Chronic lead complications
	Without compromised therapy	With compromised therapy			
Conductor Fracture	0	0	Abnormal Defibrillation Impedance	0	0
Crimps, Welds, and Bonds	0	0	Abnormal Pacing Impedance	1	7
Insulation Breach	1	3	Cardiac Perforation	0	0
Other	0	0	Conductor Fracture	0	1
All lead malfunctions	1	3	Extracardiac Stimulation	0	0
			Failure to Capture	2	11
			Failure to Sense (undersensing)	0	0
			Insulation Breach	0	0
			Lead Dislodgement	3	1
			Other	0	0
			Oversensing	0	23
			All lead complications	6	43

Note: the above survival curve only accounts for Lead malfunctions and Chronic lead complications; it does not include Acute lead complications, in accordance with the international standard ISO 5841-2.

5.2.5 Tilda JT - R - T

The Tilda lead models are reported in Biotronik’s Product Performance Report⁷, provided that they reach the inclusion criteria (Refer to the Tilda and Selox/Setrox sections).

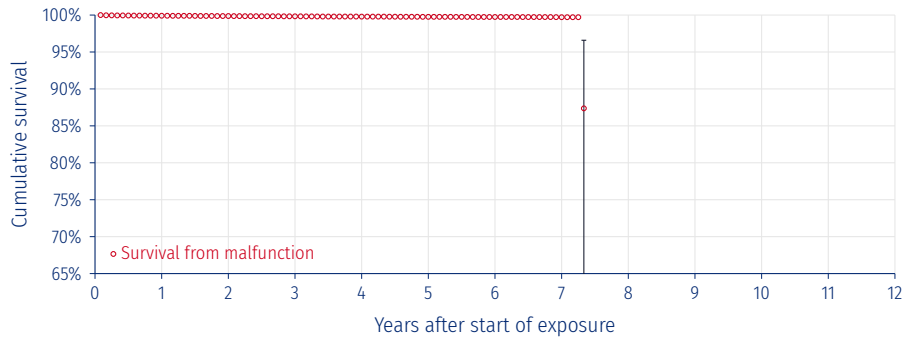
⁷ Biotronik’s PPR document is available on Biotronik’s website at: <https://www.biotronik.com/en-gb/healthcare-professionals/product-performance-report>

5.2 Pacing leads

[« Go back to Table of Contents](#)

5.2.6 Vega

Vega R45
Vega R52
Vega R58



Cutoff date	30-Jun-2025	Worldwide implants	189511	Worldwide malfunctions	337
Market release date	Apr-2017	Estimated active implants	174294	- Devices with compromised therapy	165
Analysis stopped at 88 months due to < 50 exposed devices				- Devices without compromised therapy	172

Cumulative survival from malfunction with 95% confidence interval, as a function of years after implant												
Years after implant	1	2	3	4	5	6	7	8	9	10	11	12
Cumulative survival from malfunction in %	99.91	99.87	99.83	99.79	99.76	99.74	99.71					
Upper confidence interval (+) in %	0.01	0.02	0.02	0.02	0.03	0.03	0.04					
Lower confidence interval (-) in %	0.01	0.02	0.02	0.03	0.03	0.03	0.05					

Lead malfunctions	Lead malfunctions		Lead complications		Acute lead complications	Chronic lead complications
	Without compromised therapy	With compromised therapy				
Conductor Fracture	0	0			0	0
Crimps, Welds, and Bonds	1	3			11	22
Insulation Breach	8	50			102	20
Other	0	0			0	3
					0	0
					1	0
					142	99
					2	5
					0	12
					174	41
					1	0
					15	116
All lead malfunctions	9	53	All lead complications		448	318

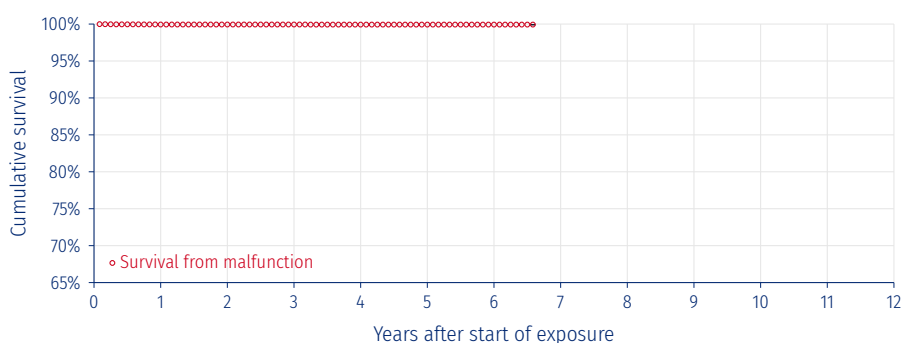
Note: the above survival curve only accounts for Lead malfunctions and Chronic lead complications; it does not include Acute lead complications, in accordance with the international standard ISO 5841-2.

5.2 Pacing leads

[« Go back to Table of Contents](#)

5.2.7 XFine JX24D - JX25D

XFine JX24D
XFine JX25D



Cutoff date	30-Jun-2025	Worldwide implants	19880	Worldwide malfunctions	12
Market release date	Apr-2018	Estimated active implants	18537	- Devices with compromised therapy	2
Analysis stopped at 79 months due to < 50 exposed devices				- Devices without compromised therapy	10

Cumulative survival from malfunction with 95% confidence interval, as a function of years after implant												
Years after implant	1	2	3	4	5	6	7	8	9	10	11	12
Cumulative survival from malfunction in %	99.94	99.94	99.94	99.93	99.93	99.93						
Upper confidence interval (+) in %	0.03	0.03	0.03	0.03	0.03	0.03						
Lower confidence interval (-) in %	0.05	0.05	0.05	0.05	0.05	0.05						

Lead malfunctions	Lead malfunctions		Lead complications			Acute lead complications	Chronic lead complications						
	Without compromised therapy	With compromised therapy	Abnormal Defibrillation Impedance	Abnormal Pacing Impedance	Cardiac Perforation	Conductor Fracture	Extracardiac Stimulation	Failure to Capture	Failure to Sense (undersensing)	Insulation Breach	Lead Dislodgement	Other	Oversensing
Conductor Fracture	0	1	0	0	0	0	0	7	0	0	34	2	0
Crimps, Welds, and Bonds	0	0	0	0	0	0	0	0	0	0	0	0	0
Insulation Breach	0	0	0	0	0	0	0	0	0	0	0	0	0
Other	0	0	0	0	0	0	0	0	0	0	0	0	0
All lead malfunctions	0	1	0	0	0	0	0	7	0	0	34	2	0
			All lead complications			43	14						

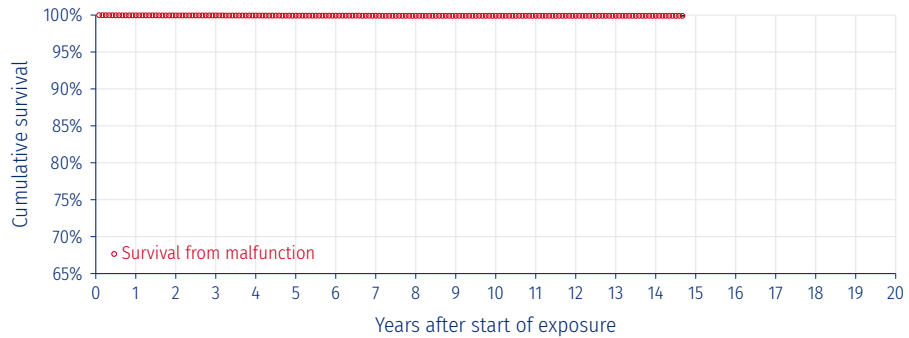
Note: the above survival curve only accounts for Lead malfunctions and Chronic lead complications; it does not include Acute lead complications, in accordance with the international standard ISO 5841-2.

5.2 Pacing leads

[« Go back to Table of Contents](#)

5.2.8 XFine TX25D - TX26D

XFine TX25D
XFine TX26D



Cutoff date	30-Jun-2025	Worldwide implants	73245	Worldwide malfunctions	58
Market release date	Apr-2008	Estimated active implants	61182	- Devices with compromised therapy	38
Analysis stopped at 177 months due to < 50 exposed devices				- Devices without compromised therapy	20

Cumulative survival from malfunction with 95% confidence interval, as a function of years after implant																				
Years after implant	1	2	3	4	5	6	7	8	9	10	11	12	13	14	15	16	17	18	19	20
Cumulative survival from malfunction in %	99.96	99.95	99.95	99.94	99.92	99.92	99.91	99.9	99.9	99.9	99.9	99.9	99.9	99.9	99.9					
Upper confidence interval (+) in %	0.01	0.01	0.01	0.02	0.02	0.02	0.02	0.02	0.02	0.02	0.02	0.02	0.02	0.02	0.02					
Lower confidence interval (-) in %	0.02	0.02	0.02	0.02	0.03	0.03	0.03	0.03	0.03	0.03	0.03	0.03	0.03	0.03	0.03					

Lead malfunctions	Lead malfunctions		Lead complications			Acute lead complications	Chronic lead complications						
	Without compromised therapy	With compromised therapy	Abnormal Defibrillation Impedance	Abnormal Pacing Impedance	Cardiac Perforation	Conductor Fracture	Extracardiac Stimulation	Failure to Capture	Failure to Sense (undersensing)	Insulation Breach	Lead Dislodgement	Other	Oversensing
Conductor Fracture	1	3	0	0	0	0	0	12	1	0	1	2	2
Crimps, Welds, and Bonds	0	2	0	7	0	0	0	1	0	0	3	0	0
Insulation Breach	1	4	0	1	0	0	0	26	0	0	0	0	0
Other	1	0	0	0	0	0	0	0	0	0	0	0	9
All lead malfunctions	3	9	All lead complications	29	53								

Note: the above survival curve only accounts for Lead malfunctions and Chronic lead complications; it does not include Acute lead complications, in accordance with the international standard ISO 5841-2.

5.2.9 Pacing leads synopsis

The table presented below summarizes device information:

Models	Family	Market release date	Worldwide implants	Estimated active implants	Worldwide malfunctions	Devices with compromised therapy	Devices without compromised therapy	Devices returned and analyzed
Beflex RF45D	Beflex	Dec-09	192732	164494	382	237	145	476
Beflex RF46D		Dec-09						
Petite 44 ERJB	Petite	May-16	2572	2141	38	28	10	7
Petite 52 ERB		Jun-16						
Petite 52 ERJB		Mar-16						
Petite 52 RJB		Feb-16						
Petite 58 ERB		Jun-16						
Petite 58 RB		Feb-16						
PY2 52 ENV		PY2						
PY2 52 ER	Apr-16							
PY2 52 RU	Feb-16							
PY2 58 ENV	Apr-16							
PY2 58 ER	Apr-16							
PY2 58 RU	May-16							
Screwvine 44	Screwvine	Jun-16	4974	4271	43	33	10	8
Screwvine 52		Jun-16						
Screwvine 58		Jun-16						
Vega R45	Vega	Apr-17	189511	174294	337	165	172	427
Vega R52		Apr-17						
Vega R58		Apr-17						
XFine JX24D	XFine	Apr-18	19880	18537	12	2	10	11
XFine JX25D		Apr-18						
XFine TX25D	XFine	Apr-08	73245	61182	58	38	20	41
XFine TX26D		Apr-08						

*Only available for our most recent models

The table presented below summarizes cumulative survival probability from malfunction:

Models	Family	Cumulative survival from malfunction (%) as a function of years after implant																				
		1	2	3	4	5	6	7	8	9	10	11	12	13	14	15	16	17	18	19	20	
Beflex RF45D	Beflex	99.94	99.91	99.87	99.84	99.81	99.78	99.75	99.74	99.73	99.72	99.7										
Beflex RF46D																						
Petite 44 ERJB	Petite	99.8	99.48	99.28	98.94	98.77	98.64	98.39	98.39													
Petite 52 ERB																						
Petite 52 ERJB																						
Petite 52 RJB																						
Petite 58 ERB																						
Petite 58 RB																						
PY2 52 ENV		PY2	100	100	100	100	100	100	100	100												
PY2 52 ER																						
PY2 52 RU																						
PY2 58 ENV																						
PY2 58 ER																						
PY2 58 RU																						
Screwvine 44	Screwvine	99.86	99.73	99.61	99.43	99.34	99.21	99.1	99.1													
Screwvine 52																						
Screwvine 58																						
Vega R45	Vega	99.91	99.87	99.83	99.79	99.76	99.74	99.71														
Vega R52																						
Vega R58																						
XFine JX24D	XFine	99.94	99.94	99.94	99.93	99.93	99.93															
XFine JX25D																						
XFine TX25D	XFine	99.96	99.95	99.95	99.94	99.92	99.92	99.91	99.9	99.9	99.9	99.9	99.9	99.9	99.9							
XFine TX26D																						

6 Field Safety Notices and product advisories

6.1 Cardioverter defibrillators

6.1.1 Paradym DR, Paradym CRT-D and Paradym CRT-D SonR

Original date of Field Safety Notice: June 2010

Field Safety Notice description

A Field Safety Notice was issued for a rare software anomaly in Paradym DR 8550, CRT 8750 and CRT SonR 8770 device models. The issue is not related to any device component malfunction. A software update will be available to correct the issue.

The notification stated that this software anomaly could occur only under a rare and specific sequence of events:

- First, the criteria to charge the shock capacitors (due to a ventricular arrhythmia) and the criteria to mode switch (due to an atrial arrhythmia) are met exactly at the same time;
- Second, the device delivers a shock (*e.g.* due to a sustained ventricular arrhythmia).

In the unlikely event that both of these conditions occur, the indicated devices will lose the ability to sense/pace and to deliver further therapy.

A software update has eliminated this risk. The new software was automatically downloaded during next interrogation with programmer software version Smartview 2.22 in Europe / Smartview 2.22UG1 in the US.

Patient recommendations

Revised programmer software (Smartview 2.22 in Europe / Smartview 2.22UG1 in the U.S.)⁸ for Orchestra programmer has been distributed to correct this rare software anomaly.

⁸ Correction released in June 2010 in Europe, Japan and the US

6.1.2 Paradym ICDs and PhD feature

Original date of Field Safety Notice: April 2011

Field Safety Notice description

A Field Safety Notice was issued in relation to potential pacing inhibition with Paradym ICDs, when the PhD feature is programmed ON and when the device is connected to high-polarization defibrillation leads. The notification is not related to any ICD device component malfunction.

PhD is a follow-up monitoring feature based on Minute Ventilation (MV) information, which is measured through the ventricular defibrillation lead. Measurements are displayed by the programmer under the "PhD-Clinical Status" screen. This feature is automatically activated when the shock therapy is programmed ON. The notification stated that ventricular oversensing associated with the PhD feature could result in bradycardia episodes or syncope; no permanent injury or death has occurred as a result of the identified anomaly.

Ventricular oversensing was related to Minute Ventilation (MV) pulse current injection, as observed on the intra-cardiac EGMs; when oversensing was sustained, pacing was inhibited.

There was no risk of inappropriate ATP or shock therapy; as soon as a Ventricular Fibrillation (VF) or Fast Ventricular Tachycardia (Fast VT) is detected, the PhD feature is temporarily switched OFF to confirm presence or absence of an arrhythmia, until slow rhythm is recovered:

- If the VF / Fast VT is confirmed, ATP or shock therapy is delivered based on the programmed device settings.
- If not, no therapy is delivered.

When the PhD feature was reprogrammed OFF, the oversensing phenomenon did not recur.

During laboratory testing, Sorin CRM reproduced the issue and observed ventricular oversensing due to the PhD feature when the Paradym ICD was connected to defibrillation leads from several manufacturers, including Sorin CRM previous generation defibrillation leads. When oversensing was reproduced with a specific lead model, high-polarization was measured for that lead. When PhD was programmed OFF, no such oversensing occurred.

Potentially affected units

In the U.S. and Canada, PhD is available in Paradym CRT-D 8770 only; therefore the notification does not affect the other Paradym models in those countries.

Outside the U.S. and Canada, Paradym VR 8250, DR 8550, CRT-D 8750 and 8770 are affected by this notice.

The PhD feature was not available in previous Sorin CRM ICDs, which are therefore not affected by this notice.

Patient management recommendations

Since it is not possible to provide a determination whether a specific lead is a high-polarization lead the following recommendations were provided:

- **For patients with affected devices:** **1)** Patient and device programming records should be reviewed for each patient with an affected device to determine if the patient is pacemaker-dependent and the PhD feature is programmed ON or OFF; **2)** If the PhD feature is programmed ON and the patient is pacemaker-dependent, Sorin CRM recommends that a prompt follow-up be scheduled to switch OFF the PhD feature in order to eliminate the risk of pacing inhibition.

- **For future implants:** Sorin CRM recommends that PhD feature be programmed OFF for pacemaker-dependent patients in order to eliminate the risk of pacing inhibition.

A software update to automatically switch OFF PhD upon device interrogation was developed (Smartview 2.28) and made available by the end of July 2011⁹. This software update also removed the PhD feature from all new Paradym devices. For Paradym models included in the Clepsydra clinical study, this software upgrade was made available at the end of the study. This has eliminated the risk of pacing inhibition due to oversensing associated with the PhD feature.

6.1.3 Paradym CRT-D Patient Booklets in US and Canada

Original date of the advisory: April 2011

Advisory description

This product advisory was issued in relation to the inclusion of an incorrect Patient Booklet¹⁰ into the commercial packaging of a limited number of Paradym DR & Paradym VR ICD models distributed in the US and in Canada. The Patient Booklet of Paradym CRT-D model (ICD with resynchronization therapy) was packaged with Paradym DR and VR ICD models manufactured by Sorin CRM for the US and Canada. 491 devices were shipped to the US and 37 devices to Canada with the incorrect Patient Booklet.

It is important to note that only the Patient Booklet's version was incorrect: the device packaging included the proper Physician's Implant Manual and device identification labels.

The issue is not related to any safety consideration and did not involve any risk to patients.

Corrections implemented

The company determined that there is no risk of adverse event associated with this labeling error: contents of the Paradym CRT-D Patient Booklet mostly differ from the contents of Paradym DR and VR ICDs Patient Booklet by additional informative data included in the CRT-D Patient Booklet about heart failure disease and associated therapies, which do not apply to patients implanted with an ICD. Importantly there is no difference regarding the information about patient recommendations (hospital discharge, follow-up visits, unit replacement, warnings and precautions, etc.) and user assistance information¹¹.

For affected units that were not yet implanted (*i.e.* units either still in the Sorin CRM warehouse, or in trunk locations of Sorin CRM field representatives, or in hospital inventory), Sorin CRM instructed its field representatives to attach the correct Patient Booklet as an addendum to the device's external packaging, along with a cover letter explaining the discrepancy.

⁹ SmartView 2.28 released in July 2011 in Europe
SmartView 2.28J released in July 2011 in Japan
SmartView 2.34UG1 released in March 2013 in US
SmartView 2.40UG2 released in March 2014 in Canada

¹⁰ The Patient Booklet is provided to the patient after implant of the defibrillation system (ICD and lead(s)). This booklet contains various informative materials such as:

- Information about the heart's functioning, its diseases and associated therapies
- Instructions to the patient : recommendations, warnings, precautions, hazards, contacts, ...
- Information on the implanted system (description, serial numbers, ...)

¹¹ User assistance information: On the last page of the Patient Booklet, the physician or the hospital staff can fill a blank form to provide the patient with information on his/her device, such as device serial number, physician references, medications, etc.

6.1.4 Ovatio, Paradym, Paradym RF, Paradym 2 and Intensia – Undetectable battery depletion in the event of recurrent shock capacitor charging

Original date of Field Safety Notice: April 2017

Field Safety Notice description

In the event of a right ventricular lead issue (e.g. broken or disconnected lead), recurrent shock capacitor charging due to ventricular oversensing may result in depletion of the ICD or CRT-D battery. Because the battery status is not updated for a 24-hour period following a charge, battery depletion may remain undetectable during the 24 hours following the last charge. Recurrent charging will stop either after deactivation of the shock therapies, or when the oversensing stops, such as in the case of a lead revision.

Annex 1 provides a list of warnings and observations that can potentially be displayed in case of a lead issue or battery depletion.

If an updated battery status is not obtained prior to the lead revision, the need for an ICD or CRT-D replacement cannot be assessed. If the battery is found to be depleted after the lead revision, adequate therapy may not be available and the patient may have to undergo another surgical procedure to replace the ICD or CRT-D.

Patient recommendations

If you have decided to revise the right ventricular lead due to oversensing issues, the following steps should be taken:

- Prior to lead revision:
 - o Deactivate the shock therapies to avoid further charging¹²,
 - o Wait 24 hours^{??}, and
 - o Re-interrogate the ICD or CRT-D to check the updated battery status. If RRT is reached, initiate a device replacement.

Or

- If it is not possible to wait 24 hours prior to replacing the lead, the lead revision may be performed as scheduled and the device may be replaced prophylactically during the same procedure since the battery status is unknown.

¹² These operations should be performed by medical personnel in an appropriate care unit, with resuscitation equipment present, and after having weighed the benefit/risks for the patient.

Annex 1

List of potential warnings

Table 1:

Ovatio ²⁵	Paradym family ²⁶	Paradym RF family ²⁷	RMS ²⁸	Warnings/Observations potentially displayed by the programmer or received through the Remote Monitoring System
X	X			[2] Charge time > 40 s: x. Defibrillation system potentially ineffective.
X	X	X		[3] Low shock impedance. Defibrillation system potentially ineffective.
X				Load resistance of last shock < 0 ohm
X	X	X	X	[4] Last shock impedance > 150 ohms. Defibrillation system potentially ineffective.
X	X			[6] Ventricular lead impedance < 200 ohms: x Defibrillation system potentially ineffective.
		X	X	[6] Ventricular lead impedance < x ohms: x, x/x/x. Defibrillation system potentially ineffective.
X	X			[7] Right ventricular lead impedance < 200 ohms: x Defibrillation system potentially ineffective.
		X	X	[7] RV lead impedance < x ohms: x, x/x/x. Defibrillation system potentially ineffective.
X	X			[8] Left ventricular lead impedance < 200 ohms: x
		X	X	[8] LV lead impedance < x ohms: x, x/x/x.
X	X			[10] Ventricular lead impedance > 3000 ohms: Defibrillation system potentially ineffective.
		X	X	[10] Ventricular lead impedance > x ohms: x, x/x/x. Defibrillation system potentially ineffective.
X	X			[11] Right ventricular lead impedance > 3000 ohms: Defibrillation system potentially ineffective.
		X	X	[11] RV lead impedance > x ohms: x, x/x/x. Defibrillation system potentially ineffective.
X	X			[12] Left ventricular lead impedance > 3000 ohms
		X	X	[12] LV lead impedance > x ohms: x, x/x/x.
		X	X	[14] RV shock electrode continuity > 3000 Ohms x/x/x. Defibrillation system potentially ineffective.
	X			[15] Ventricular shock electrode continuity > 3000 Ohms: defibrillation system ineffective.
X				[16] Ventricular shock electrode continuity ABNORMAL : defibrillation system potentially ineffective.
X	X	X	X	[17] Battery depletion detected (end of life indicator): replace the device. Magnet rate (min ⁻¹): x
X				[18] ERI (Elective Replacement Indicator) detected: plan to replace device. Magnet rate (min ⁻¹): x
	X	X	X	[18] R.R.T. (Recommended Replacement Time) detected: plan to replace device.
X	X	X		[19] Abnormal battery voltage values from x/x/x to x/x/x. Defibrillation system potentially ineffective.
X	X	X		[20] Abnormal battery voltage measured since x/x/x. Defibrillation system potentially ineffective.
X				[28] Last battery voltage measurement abnormal.
	X	X		[29] Last battery voltage measurement abnormal.
X	X			[34] Last charge time (s): x. Defibrillation system ineffective.
X	X			[35] Max energy charge time > 40 s: x Defibrillation system potentially ineffective.

Continued on next page

6.1 Cardioverter defibrillators

[« Go back to Table of Contents](#)

Table 1: (Continued)

X	X			[37] Last saved ventricular lead impedance < 200 ohms: x (x x x), defibrillation system potentially ineffective.
X	X			[38] Last saved right ventricular lead impedance < 200 ohms: x (x x x), defibrillation system potentially ineffective.
X	X			[39] Last saved left ventricular lead impedance < 200 ohms: x (x x x)
X	X			[41] Last saved ventricular lead impedance > 3000 ohms (x x x), defibrillation system potentially ineffective.
X	X			[42] Last saved right ventricular lead impedance > 3000 ohms (x x x), defibrillation system potentially ineffective.
X	X			[43] Last saved left ventricular lead impedance > 3000 ohms (x x x)
	X			[45] Low shock impedance detected on x x x: defibrillation system ineffective.
	X			[46] High shock impedance detected on x x x: defibrillation system ineffective.
	X			[47] Excessive electrical consumption detected on x x x. Risk that system is ineffective.
	X			[48] Max shock energy ineffective on x x x
	X			[50] Suspected abnormal ventricular lead impedance on x x x (x): defibrillation system potentially ineffective.
	X			[51] Suspected abnormal right ventricular lead impedance on x x x (x): defibrillation system potentially ineffective.
	X			[52] Suspected abnormal left ventricular lead impedance on x x x (x).
	X			[53] Abnormal RV coil impedance on x x x: defibrillation system ineffective.
	X			[54] Abnormal SVC coil impedance on x x x: defibrillation system ineffective.
	X			[55] Insufficient electrical performance detected on x x x: defibrillation system ineffective.
	X			[56] Charge time > 25 s on x x x: defibrillation system potentially ineffective.
	X			[57] R.R.T. (Recommended Replacement Time) detected on x x x: plan to replace device.
		X		[58] Last shock energy delivered (J) : x. Defibrillation system potentially ineffective.
X	X			Delivered energy of last shock (J) : x
		X	X	[62] Excessive charge time detected. Defibrillation system potentially ineffective.
		X		[63] xV lead impedance < x ohms: x, x/x/x. (Applicable to TriV only)
		X		[64] xV lead impedance > x ohms: x, x/x/x. (Applicable to TriV only)
	X			[73] The last battery voltage measurement was performed more than 3 days ago. An updated measurement will be displayed 24hrs after the latest capacitor charge.
		X	X	[A1] Low shock impedance on x/x/x. Defibrillation system potentially ineffective.
		X	X	[A2] High shock impedance on x/x/x. Defibrillation system potentially ineffective.
		X	X	[A4] Max shock energy ineffective on x/x/x.
		X	X	[A9] Ventricular lead impedance < x ohms: x, x/x/x, x. Defibrillation system potentially ineffective.
		X	X	[A11] Ventricular lead impedance > x ohms: x, x/x/x, x. Defibrillation system potentially ineffective.
		X	X	[A13] RV lead impedance < x ohms: x, x/x/x, x. Defibrillation system potentially ineffective.
		X	X	[A15] RV lead impedance > x ohms: x, x/x/x, x. Defibrillation system potentially ineffective.
		X	X	[A17] LV lead impedance < x ohms: x, x/x/x, x.
		X	X	[A19] LV lead impedance > x ohms: x, x/x/x, x.
		X	X	[A21] RV shock electrode continuity > 3000 Ohms on x/x/x. Defibrillation system potentially ineffective.

Continued on next page

Table 1: (Continued)

		X	X	[A24] Excessive Charge Time, x/x/x. Defibrillation system potentially ineffective.
		X	X	[A25] R.R.T. (Recommended Replacement Time) detected x/x/x: plan device replacement.
		X	X	[A27] Percentage of V pacing in CRT less than [programmed threshold]%; [dd/mon/yyyy].
		X	X	[A28] AT/AF Daily Burden higher than [programmed threshold]: [value measured], [dd/mon/yyyy].
		X	X	[A31] Shocks delivered, x/x/x.
		X	X	[A32] Ineffective shocks delivered, x/x/x.
		X	X	[A33] V oversensing suspected.
		X		[A35] xV lead impedance < x ohms: x, x/x/x, x. (Applicable to TriV only)
		X		[A37] xV lead impedance > x ohms: x, x/x/x, x. (Applicable to TriV only)

²⁵ Ovatio VR 6250, Ovatio DR 6550, Ovatio CRT 6750

²⁶ PARADYM VR 8250, PARADYM DR 8550, PARADYM CRT-D 8750, PARADYM SonR 8770

²⁷ PARADYM SonR TriV 8970, PARADYM 2 VR 8252, PARADYM 2 DR 8552, PARADYM 2 CRT-D 8752, PARADYM 2 SonR CRT-D 8772, PARADYM RF VR 9250, PARADYM RF DR 9550, PARADYM RF CRT-D 9750, PARADYM RF SonR 9770, INTENSIA VR 124, INTENSIA DR 154, INTENSIA CRT-D 174, INTENSIA SonR CRT-D 184

²⁸ Remote Monitoring System

6.1.5 Platinum – 30Hz pacing and inductive telemetry

Original date of Field Safety Notice: July 2016

1. Information about ventricular fibrillation induction test using 30Hz pacing burst with RF telemetry

Field Safety Notice description

As of June 30, 2016, the company received four (4) reports (*i.e.* 0.087%) of programmer screen freeze during 30Hz pacing while the test was launched using RF telemetry. The space bar of the programmer keyboard, as well as the buttons on the programmer screen remained unresponsive (buttons grayed out) during the delivery of the 30Hz burst, making it impossible to stop the test before the end of the programmed burst duration²⁹. If ventricular fibrillation is effectively induced, and the user wants to prematurely interrupt the 30Hz pacing, there can be a delay in the delivery of the shock therapy which may prolong the syncope.

Patient recommendations

After consulting with our CRM independent Product Performance Monitoring Board, the company recommends the following:

- As soon as the next programmer software version is available³⁰, it should be used to perform any new implantation of PLATINIUM devices or any new VF induction.
- Until the time the new programmer software version is available:
 - o When performing induction tests, shocks on T-wave can be used as an alternative to 30Hz pacing.
 - o When performing 30Hz induction test using RF telemetry, the company recommends the following:
 - Program short 30Hz burst durations, and re-iterate the 30Hz pacing burst if ventricular fibrillation is not induced on the first attempt.
 - Even if the programmer screen freezes, the 30Hz pacing burst can still be interrupted through a Rescue Shock or a Nominal command.
 - Launching a Rescue Shock will trigger an immediate charge of the device capacitors followed by the delivery of a 42 Joules shock.
 - Selecting the Nominal settings will force the device to use the Nominal values, including arrhythmia detection and arrhythmia therapy parameters.

2. Information about inductive telemetry

Field Safety Notice description

As of June 30, 2016, the company received six (6) reports (*i.e.* 0.13%) of loss of inductive telemetry function during patient follow-up, whereas inductive telemetry was fully functional at device implantation. As a consequence, it was not possible to interrogate the device and the follow-up could not be completed.

Patient recommendations

After consulting with our CRM independent Product Performance Monitoring Board, the company recommends the following: For future PLATINIUM implants:

²⁹ The burst duration is programmable between 1 second and 30 seconds.

³⁰ Smartview 2.54 released in September 2016 in Europe
Smartview 2.54J released in September 2016 in Japan
SmartView 2.54UG1 released in April 2017 in Canada

- The “RF for Remote Monitoring” setting is turned ON automatically when shocks are programmed ON. The company recommends that you leave this feature programmed ON, even if your patient is not enrolled in Remote Monitoring.

For patients already implanted with PLATINIUM devices:

- During the next follow-up³¹, verify that the “RF for Remote Monitoring” setting is programmed ON. If not, reprogram it ON.
- If you do not succeed in interrogating the device using inductive telemetry, please contact your company representative. In most cases, recovery of the inductive telemetry function will be possible through a dedicated procedure.

6.1.6 Platinum – Overconsumption following ElectroStatic Discharge or MRI scan

Original date of Field Safety Notice: July 2017

Field Safety Notice description

There are two issues discussed in this letter:

1. An electronic component used in a specific hardware version of Platinum devices has been found to be sensitive to electrostatic discharge (ESD) potentially generated during the implant surgery. The discharge can trigger overconsumption of current, leading to reduced device longevity (5% longevity loss per month). The overconsumption is detectable upon interrogation of the device during follow-up visit and it can be stopped by resetting the device. Although the overconsumption is stopped after this reset, the residual longevity displayed by the programmer may temporarily be underestimated.
2. Although Platinum devices are not currently approved as MRI conditional and are therefore contraindicated for MRI, the company is aware that some patients implanted with a Platinum device have undergone an MRI scan based upon medical judgment weighing the benefits and risks of the procedure. When exposure to an MRI’s magnetic field occurs, overconsumption can occur and the battery voltage will decrease to 2.80V. At this level, the device remaining longevity is 25% of the initial longevity.

Neither of the issues described above affects the therapeutic functions of the device. All sensing, pacing and shock delivery capabilities will remain functional.

How did this affect patients?

No permanent injury or death has occurred as a result of these issues.

As of June 16th, 2017, the company has received eighteen (18) reports of overconsumption associated with ESD exposure at implant (issue #1), out of the 9386 devices that can be affected by this issue (*i.e.* 0.19%). Specifically:

- The device associated with the first issue reported was explanted before it could be corrected by reset;
- Twelve (12) were corrected by reset within the 3 months after implant, resulting in less than 15% reduction in longevity; and
- Five (5) were corrected by reset in the 4 to 10 month time frame post-implant, resulting in a greater longevity reduction.

As of June 16th, 2017, the company has received four (4) reports of overconsumption and premature device replacement attributed to MRI scans (issue #2), out of the 9386 devices that can be affected by

³¹ It is recommended that a routine follow-up examination be done one month after discharge, and then every three months until the device nears the replacement date.

this issue (*i.e.* 0.04%). The overconsumption led to premature device replacement in the four (4) cases reported after the MRI scans. In one (1) of these four cases, the patient reported feeling a sensation of heat in the area of device.

Actions taken by the company to address these issues

1. Since May 18th, 2017, the company has stopped releasing Platinum devices with the electronic component that can potentially adversely react to either an ESD generated at implant or the MRI's magnetic field. Platinum devices with a new version of this electronic component have been made available.
2. The company is initiating a correction of the affected implanted devices and a removal of the non implanted affected devices.
3. To eliminate the risk of overconsumption caused by interaction with the MRI's magnetic field, the company developed a new software version³² that has been approved and will be deployed shortly. All implanted devices will be automatically upgraded upon interrogation by a programmer updated with the new software. Your company representative will inform you as soon as the new software is available and will assist you in upgrading your programmer.

Advise on action to be taken by the user

1. Identify and quarantine affected Platinum devices that are still in your inventory. To determine if a device is subject to this advisory and could potentially present with a risk of overconsumption, your company representative can assist you in the identification of these products as necessary³³.
2. Return Platinum devices that are subject to this advisory to the company by contacting your company representative or your local Customer Service and referencing this communication to initiate a return and credit of unused product. Your company representative can assist you in the return of these products as necessary.
3. In order to mitigate the potential risks associated with both triggering events (ESD at implant or MRI scan), the company recommends physicians follow-up the patients at the periodicity already stated in the implant manual³⁴, especially:
 - Before the patient is discharged and at each subsequent follow-up, it is advisable to check the battery status and the occurrence of system warnings;
 - It is recommended that a routine follow-up examination be done one month after discharge, and then every three months until the device nears the replacement date.
4. The company does not recommend anticipating patient visits, provided that the instructions for use are followed.
5. If the warning "[A3] Technical issue" is displayed, then this indicates that the device is affected by the overconsumption caused by an ESD at implant. Without delay, please contact your company representative who will organize the reset of the device. A second reset may be necessary in order to correct the estimation of the residual longevity displayed by the programmer. It will be organized at the next scheduled patient visit.

³² SmartView 2.56 released in July 2017 in Europe
SmartView 2.56J released in July 2017 in Japan
SmartView 2.56UG1 released in November 2017 in US
SmartView 2.56UG2 released in December 2018 in Canada

³³ The following sentence has been removed, as the mentioned website is not available anymore: To determine if a device is subject to this advisory and could potentially present with a risk of overconsumption, please go and check its serial number on the following website: www.livanova.com/platinum-fsn.

³⁴ For instance, Implant Manual reference U456C (section 8) in Europe.



WARNINGS: Please refer to the Online Help for more details.
[A3] Technical issue on 8/Jul/2016. Defibrillation system potentially ineffective. Contact Sorin.

6.1.7 Platinum – Risk of intermittent contact in the DF4 connectors

Original date of Field Safety Notice: March 2018

Field Safety Notice description

On a subset of Platinum ICDs or CRT-Ds DF4 models, a component of the DF4 connector was identified as potentially defective leading to intermittent loss of contact. As a consequence, high values of continuity measures on the defibrillation coils or noise on the right ventricular channel may be observed. This issue could also lead to absence of ventricular pacing therapy and/or inappropriate shock. Delivery of defibrillation shock is unaffected.

How did this affect patients?

No permanent injury or death has occurred as a result of these issues.

As of January 31st, 2018 the company has received six (6) reports on Platinum devices about this issue out of the 6947 Platinum devices equipped with a DF4 connector distributed over the same period of time (0.09%). All six events were detected within the first month after implantation.

- There were three (3) reports of high intermittent RV coil continuity, and
- Three (3) reports of right ventricular noise and/or inappropriate shock.

Five (5) devices out of six (6) were explanted.

Actions taken by the company to address these issues

The company is initiating a recall of non implanted Platinum devices that may present with a defective DF4 connector.

Advise on action to be taken by the user

1. Identify and quarantine affected Platinum devices that are in your inventory. Refer to Attachment 2 to determine if a device from your inventory is subject to this advisory. Your company representative will assist you in the identification of these products as necessary.
2. Return Platinum devices that are subject to this advisory to the company by contacting your company representative or your local Customer Service and referencing this communication to initiate a return and credit or replacement of unused product. Your company representative will assist you in the return of these products as necessary.
3. The company does not recommend anticipating patient visits, provided that the instructions for use are followed³⁵. Standard follow-up practices allow the detection of high values of continuity measures or right ventricular noise.

³⁵ It is recommended that a routine follow-up examination be done one month after discharge, and then every three months until the device nears the replacement date. For instance, refer to the Implant Manual reference:
- U902A for Europe, sections 5.12 and 8.1
- U904A for US, sections 14.12 and 17.1

6.1.8 Platinum – Loss of pacing and sensing following hardware failure, leading to absence of automatic detection of an arrhythmia requiring defibrillation shock therapy

Original date of Field Safety Notice: July 2018

Field Safety Notice description

On a subset of Platinum ICD and CRT-D devices, a specific hardware configuration was identified as potentially defective over time, leading to overconsumption, immediately followed by loss of pacing and sensing capabilities in all cavities. As a result of the loss of sensing capability, the device cannot identify an arrhythmia that would require a defibrillation shock therapy.

How did this affect patients?

No permanent injury or death has been reported as a result of this issue. As of June 30th, 2018, MicroPort CRM has received five (5) reports on Platinum devices about this issue out of the 1637 Platinum devices released for distribution that may be subject to the issue (0.31%). MicroPort CRM has not identified a specific time frame during which the problem is more likely to occur. Nevertheless, all five events were detected within the first year after implantation. In only one (1) case, the patient reported feeling weakness. All five devices were replaced.

Actions taken by MicroPort CRM to address these issues

1. Since June 26th, 2018, MicroPort CRM has stopped releasing Platinum devices having the potentially defective hardware configuration. Platinum devices with unaffected hardware configurations have been made available.
2. MicroPort CRM is initiating a removal of the non implanted Platinum devices that may present with this hardware failure and providing recommendations for managing implanted patients.

Advise on action to be taken by the user

1. Identify and quarantine affected Platinum devices that are still in your inventory. **Appendix 2** provides the list of the devices subject to this advisory that were shipped to your center. Your MicroPort CRM representative will assist you in the identification of these products as necessary. In addition, if you would like to determine if a device is subject to this advisory, please go and check its serial number on the following website: www.crm.microport.com/platinum-fsn-2018-001.
2. Return Platinum devices that are subject to this advisory to MicroPort CRM by contacting your MicroPort CRM representative or your local Customer Service and referencing this communication to initiate a return and credit or replacement of unused product. Your MicroPort CRM representative will assist you in the return of these products as necessary.

Patient management recommendation

1. Perform patient follow-up every three months. In order to mitigate the potential risks associated with the loss of the device pacing and sensing capabilities, MicroPort CRM recommends physicians follow-up the patients at the periodicity already stated in the implant manual³⁶ and in the international guidelines³⁷, especially:
 - a. Before the patient is discharged and at each subsequent follow-up, it is advisable to check the battery status and the occurrence of system warnings;

³⁶ For instance, Implant Manual reference U456C (section 8) in Europe and Australia, U459C (section 17) in the USA, UA069A (section 17) in Canada, available at www.microportmanuals.com


³⁷ HRS/EHRA Expert Consensus on the Monitoring of Cardiovascular Implantable Electronic Devices (CIEDs): Description of Techniques, Indications, Personnel, Frequency and Ethical Considerations - Bruce L. Wilkoff & al. – Europace 2008;10:707-25

- b. It is recommended that a routine follow-up examination be done one month after discharge, and then every three months until the device nears the replacement date.
2. MicroPort CRM does not recommend rescheduling patient visits, provided that the three-month follow-up periodicity is applied.
3. MicroPort CRM recommends physicians check for proper sensing and pacing during each follow-up.
4. If one or more of the items listed below is/are observed during follow-up, then hardware failure may have occurred. Without delay, please contact your MicroPort CRM representative. Refer to the **Appendix 1** showing some examples. There is no audible or vibratory alert on Platinum ICD and CRT-D devices.
 - a. The warning “Technical issue” indicates that overconsumption was detected. A steep decrease of the battery voltage may be visible on the battery curve.
 - b. Warnings on high lead impedances in all cavities.
 - c. Loss of sensing capability will result in flat EGMs and 100% pacing in the statistics.
5. Enroll patients in SmartView™ remote monitoring and verify that the “*RF for Remote Monitoring*” setting is programmed ON. System alert checks are automatically performed on a daily basis. Integrity alerts cannot be deactivated, such as the overconsumption alert and the battery depletion alert. Verify that the high lead impedance and continuity alerts are programmed ON. Centers will automatically receive notification of such alerts overnight. On the SmartView website, verify that the “Monitoring Interruption” notification is activated (in the “Clinic Notification Settings” tab), so that the center receives a notification in case of interruption in the communication between the server and the Platinum device for 14 consecutive days. For patients currently enrolled in SmartView™, remind them of the importance of using remote monitoring.
6. MicroPort CRM does not generally recommend physicians prophylactically replace the Platinum device. However, special consideration should be given in the following circumstances:
 - a. For pacing dependent patients or those with high ventricular arrhythmia burden the relative risk of device failure versus that associated with device replacement should be assessed on an individual patient basis.
 - b. In case of a surgical procedure involving the patient’s defibrillation system, already scheduled for other causes than the one related to the Platinum device (e.g. lead revision), MicroPort CRM recommends physicians prophylactically replace the Platinum device, if subject to this advisory, during the same procedure.

APPENDIX 1

Examples of observations resulting from the hardware failure subject to this advisory

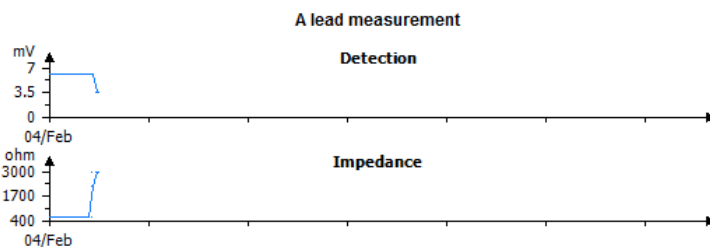
WARNINGS

 **WARNINGS: Please refer to the Online Help for more details.**
 [11] RV lead impedance > 3000 ohms, 22/Sep/2017. Defibrillation system potentially ineffective.
 [12] LV lead impedance > 3000 ohms, 22/Sep/2017.
 [13] SVC shock electrode continuity > 3000 Ohms 22/Sep/2017. Defibrillation system potentially ineffective.
 [14] RV shock electrode continuity > 3000 Ohms 22/Sep/2017. Defibrillation system potentially ineffective.
 [A40] Technical issue on 20/May/2017. Defibrillation system potentially ineffective. Contact Sorin.

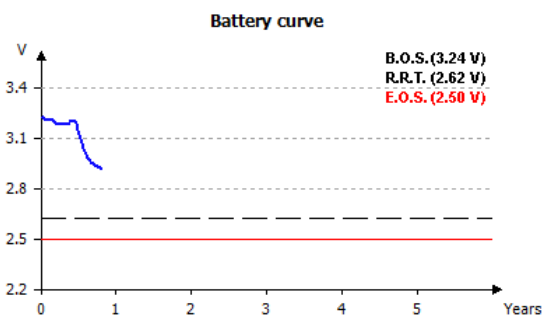
Warnings for high lead impedances and continuities
Warning for overconsumption

Leads			Threshold (V)	Impedance (ohm)
P/R Waves (mV)				
A	6.1 17/Feb/16	0.75 04/Feb/16	>3000	19/Feb/16
RV	15.4 17/Feb/16	0.50 04/Feb/16	>3000	19/Feb/16
LV		1.00 04/Feb/16	>3000	19/Feb/16
RV Coil Continuity		>3000 ohm		19/Feb/16

Warnings for high lead impedances and continuities



Atrial lead impedance curve showing a sudden increase of the impedance

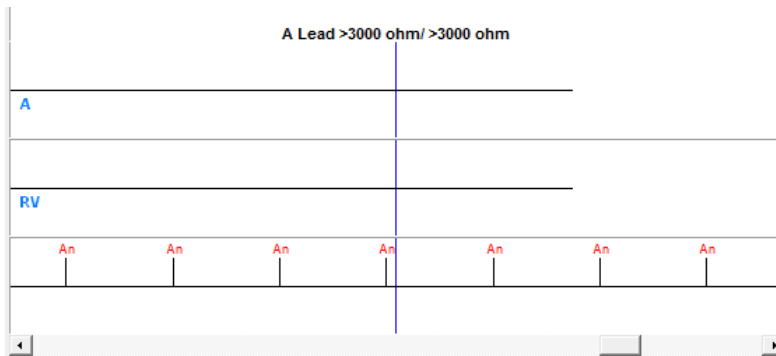


Time to RRT: 5 - 7 Years
 Last value measured : 2.91 V - 21/Sep/2017
 Last charge to 42J: 05/April/2017
 Energy beg./end: 0.1/42.2 J
 Charge time: 12.0 s
 Last shock: -
 Zone of delivery: -
 Energy stored/delivered: -/- J
 Duration: -
 Charge time: -
 Impedance: -
 Battery reforming date: -
 Total number of charges: 1
 Total time of RF transmission: 49min 23s

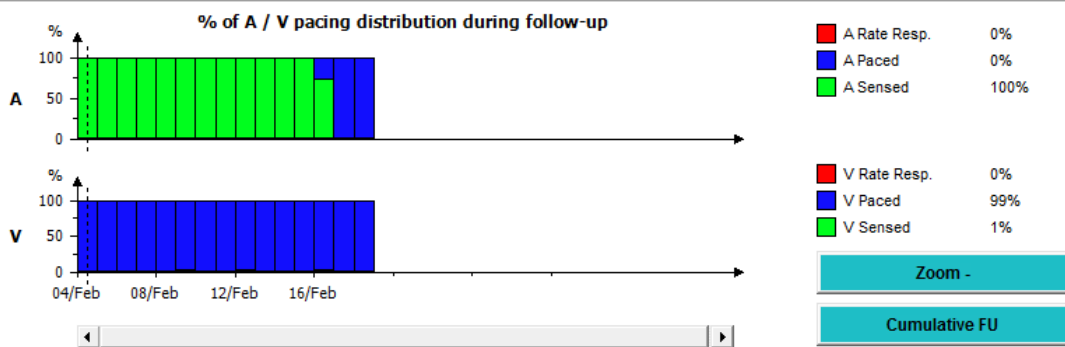
Battery curve showing a steep decrease of the battery voltage

6.1 Cardioverter defibrillators

[« Go back to Table of Contents](#)



Flat EGMs



Statistics showing 100% pacing

When the failure described in this Field Safety Notice occurs, the device will no longer pace or sense. Due to the absence of sensing, the algorithm will send a pacing command for 100% of the cardiac cycles. The pacing spikes are not delivered due to the hardware failure, but 100% pacing statistics will be shown.

6.1.9 Platinum – Release of a new software version to maintain therapies in implanted Platinum devices in case of occurrence of the hardware failure described in the Field Safety Notice issued in July 2018

Original date of Field Safety Notice: December 2018

Field Safety Notice description

On a subset of Platinum ICD and CRT-D devices, a specific hardware configuration was identified as potentially defective over time, leading to overconsumption, immediately followed by loss of pacing and sensing capabilities in all cavities. As a result of the loss of sensing capability, the device cannot identify an arrhythmia that would require a defibrillation shock therapy.

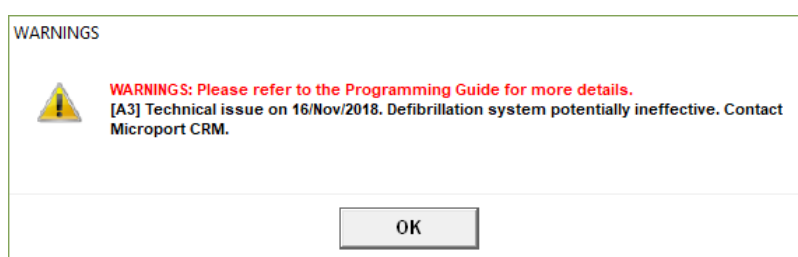
How did this affect patients?

No permanent injury or death has been reported as a result of this issue. As of December 14th, 2018, no new report has been received since the Field Safety Notice CRM-SAL-2018-001.

Actions taken by MicroPort CRM to address these issues

MicroPort CRM is releasing a new software version. Your MicroPort CRM representative will inform you as soon as the new programmer software version³⁸ is available and assist you in upgrading your programmer. All implanted devices interrogated with this new version will then be automatically upgraded. This software will ensure that pacing and sensing functionalities are preserved if a patient from your population is affected by the hardware failure. As sensing is preserved, the device will be able to identify and treat any tachyarrhythmia that would require a defibrillation shock therapy.

This new software is not able to eliminate the underlying hardware failure. The overconsumption resulting from the failure will not be interrupted. **The warning “Technical issue” will be raised, indicating that overconsumption has been detected. This alert will be sent remotely or observed during in-clinic follow-up. A minimum service period of 45 days after hardware failure is guaranteed.**



Advise on action to be taken by the user

If you would like to determine if a device is subject to this advisory, please go and check its serial number on the following website: www.crm.microport.com/platinum-fsn-2018-001.

Your MicroPort CRM representative will assist you in the identification of these products as necessary.

Patient management recommendation

1. Enroll patients in SmartView™ remote monitoring and verify that the “RF for Remote Monitoring” setting is programmed ON. Your MicroPort CRM representative will assist you in this process.

³⁸ SmartView 2.60 released in December 2018 in Europe
SmartView 2.60J released in October 2018 in Japan

2. Recommendations related to patient in-clinic or remote follow-up remain unchanged. Recommendations 1 to 3 of the Field Safety Notice CRM-SAL-2018-001 still apply:
 - i. Perform patient follow-up every three months.
 - ii. MicroPort CRM does not recommend rescheduling patient visits, provided that the three-month follow-up periodicity is applied.
 - iii. MicroPort CRM recommends physicians check for proper sensing and pacing during each follow-up.
3. Recommendations related to the software upgrade:
 - i. Upgrade your programmer with the updated software version. Your MicroPort CRM representative will inform you as soon as the new programmer software version is available and assist you in upgrading your programmer.
 - ii. Interrogate Platinum devices with the upgraded programmer during patient in-clinic follow-up. During the first interrogation, the updated software will be loaded in the Platinum devices. **MicroPort CRM recommends that this first interrogation with an upgraded programmer take place as soon as practically possible and not later than three months after your programmer update.**
 - iii. **Priority should be given to pacing dependent patients or those with high ventricular arrhythmia burden so that they receive the updated software sooner.**
4. Once the software update has been loaded, and provided that the patient is enrolled in SmartView™ remote monitoring, prophylactic device replacement is no longer recommended. If the patient is not enrolled in SmartView™ remote monitoring, the recommendation 6 of the Field Safety Notice CRM-SAL-2018-001 is still applicable: “MicroPort CRM does not generally recommend physicians prophylactically replace the Platinum device. However, special consideration should be given in the following circumstances:
 - i. For pacing dependent patients or those with high ventricular arrhythmia burden the relative risk of device failure versus that associated with device replacement should be assessed on an individual patient basis.
 - ii. In case of a surgical procedure involving the patient’s defibrillation system, already scheduled for other causes than the one related to the Platinum device (e.g. lead revision), MicroPort CRM recommends physicians prophylactically replace the Platinum device, if subject to this advisory, during the same procedure.”
5. In case a failure of the integrated circuit arises, the alert “Technical issue” is triggered. There is no audible or vibratory alert on Platinum ICD and CRT-D devices. Without delay, please contact your MicroPort CRM representative, who will confirm if device replacement needs to be scheduled.

6.2 Pacemakers

6.2.1 Programmer software version associated with Reply SR

Original date of Field Safety Notice: September 2007

Field Safety Notice description

A Field Safety Notice was issued for an anomaly in programmer software, Smartview version 2.06 or earlier, when reprogramming Reply SR single chamber cardiac pacemakers (distributed in Europe). The notification stated that when the chamber was set to “V” (pacemaker connected to a lead implanted in the ventricle), reprogramming of the pulse amplitude and pulse width was not effective, and they remained equal to the as-shipped values (3.5 V amplitude, 0.35 ms pulse width). When the chamber was set to “A” (pacemaker connected to a lead implanted in the atrium), each programmable parameter – including pulse amplitude and pulse width – could be reprogrammed as expected. This software anomaly affected Reply SR single chamber pacemakers only; other pacemaker models were not affected.

Patient recommendations

Revised programmer software (SmartView version 2.08 for Orchestra programmer³⁹) was distributed to correct this unexpected behavior. For some of the devices included in this Field Safety Notice (Reply SR single chamber models set to “V” chamber), and based upon the evaluation of specific criteria (e.g. pacemaker reprogrammed after implant or not, pacemaker dependency, pacing threshold results at implant), a prompt follow-up visit and device interrogation were recommended utilizing this revised programmer software to check the programmed settings and correct the pulse amplitude and pulse width, when needed.

³⁹ Released in October 2007 in Europe

6.2.2 Additional information on lead connections to Reply pacemakers

Original date of the Technical Note: September 2008

Technical Note description

A Technical Note was voluntarily issued to reinforce instructions to ensure proper lead connection with Reply pacemakers at implant. The issue of this Technical Note followed an increased incidence of complaints relating to the screwdriver and setscrew. None required surgical re-intervention, but some devices were returned.

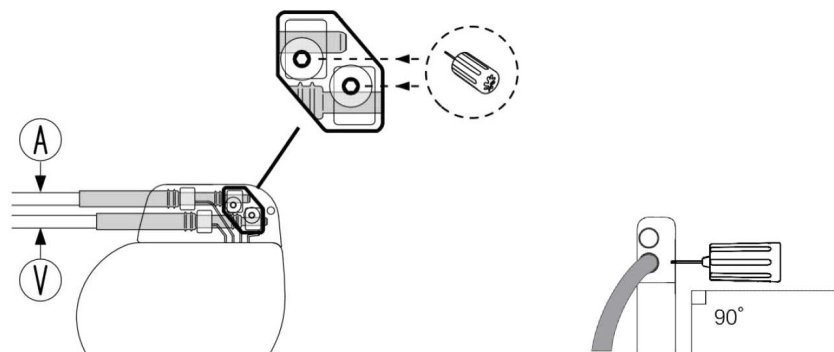
Analysis showed that the screwdriver was not fully inserted in the setscrew's hex cavity, which damaged the setscrew. To address this, Sorin CRM added an inspection step in manufacturing to eliminate any silicone adhesive inadvertently remaining in the setscrew's hex cavity (due to a gluing operation of the silicone setscrew cap during the manufacturing process), and provided a reminder and additional instructions to ensure the wrench is fully inserted.

A dedicated video was posted on Sorin CRM website in February 2009 to illustrate these instructions; it is available at

<http://www.crm.microport.com/wp-content/uploads/2019/06/Pacemaker-lead-connection.mp4>.

Below is the corresponding text describing the steps to connect the leads to the pacemaker:

Insert the lead into the port. Verify the full insertion. Insert the wrench through the screwdriver slot into the setscrew below. Very limited tilting of the wrench is a clear indication that it is fully inserted into the setscrew hex cavity. Turn clockwise until you hear a clicking sound. Pull on the lead to verify it is properly connected. Excessive tilting of the wrench is a clear indication of improper insertion. DO NOT TIGHTEN THE SCREW IN CASE OF EXCESSIVE TILTING. If this happens, gently adjust the wrench until it is completely engaged with the setscrew hex cavity and tilting is limited. You may now proceed as usual. The lead will be properly connected.



Refer to the user's manual furnished with the device for intended uses and relevant warnings, precautions, side effects, and contraindications.

Refer to the user's manual furnished with the device for complete instructions for use.

This Technical Note was classified by the FDA as a Recall class II in September 2009.

Patient recommendations

Not applicable. The Technical Note provided a reminder and additional instructions to ensure the wrench is fully inserted.

6.2.3 European programmer software version 2.24 and Reply / Esprit pacemakers

Original date of Field Safety Notice: April 2011

Field Safety Notice description

A Field Safety Notice was issued in relation to a programmer software anomaly in the European 2.24 programmer software version when interrogating Reply and Esprit pacemakers:

- Only devices manufactured between November 2008 and mid-October 2010 could be affected by the issue if they are interrogated with 2.24 version (refer to the note below about potentially affected devices);
- 24 hours after a first interrogation with 2.24 version, a magnet rate of 30 min^{-1} is displayed upon new device interrogation on the programmer screen; if a magnet is applied, the pacemaker reverts to magnet mode (asynchronous mode) with a magnet rate of 30 min^{-1} . The battery depletion curve is also incorrect. **The battery impedance and the residual longevity are not affected by the software anomaly;**
- In addition, if the initial interrogation is performed prior to implant, then an "End Of Life" warning is also displayed upon device interrogation;

The anomaly only relates to the pacing rate (30 min^{-1}) during magnet test and does not affect other functions of the device; once the magnet is removed, the device reverts to programmed settings.

This programmer software anomaly does not affect any other Sorin implantable devices.

Immediate action

Sorin CRM stopped installation of 2.24 software version. In case this version was already installed on a programmer, Sorin promptly installed a software version preventing new devices from being affected upon interrogation.

Patient recommendations

The notification recommended that physicians continue to use the battery impedance and residual longevity to determine time for device replacement.

A programmer software update addressing this anomaly (Smartview 2.28) was developed and made available by the end of July 2011. The erroneous magnet rate was automatically corrected upon interrogation with this programmer software.

Before this software update was made available, devices that had already been interrogated with 2.24 could be reset to normal operation with the previous programmer software version (a dedicated Technical Note was issued which described the steps to follow).

Depending on the circumstances (*e.g.* for pacemaker-dependent patients undergoing surgery during which the magnet could be applied to avoid pacing inhibition), physicians may consider scheduling a follow-up for devices that have already been interrogated with 2.24 to correct the magnet rate (with the procedure described in the Technical Note or with the 2.28 or higher revision).

Note

The potentially affected devices have the following eight-character serial number configuration:

Models	Serial number configuration (where x is any alphanumeric character)		
Reply DR	8xxZKxxx	9xxZKxxx	0xxZKxxx
Reply D	8xxZLxxx	9xxZLxxx	0xxZLxxx
Reply VDR	8xxZMxxx	9xxZMxxx	0xxZMxxx
Reply SR	8xxZNxxx	9xxZNxxx	0xxZNxxx
Esprit DR	8xxZPxxx	9xxZPxxx	0xxZPxxx
Esprit D	8xxZRxxx	9xxZRxxx	0xxZRxxx
Esprit SR	8xxZSxxx	9xxZSxxx	0xxZSxxx
Esprit S	8xxZTxxx	9xxZTxxx	0xxZTxxx

6.2.4 Overestimation of the residual longevity displayed by the programmer - Reply / Esprit / Facil pacemakers

Original date of Field Safety Notice: November 2013

Field Safety Notice description

As of October 15, 2013, Sorin CRM received eight (8) reports out of more than 300 000 REPLY, ESPRIT or FACIL pacemakers implanted worldwide (*i.e.* 0.0027%), in which the devices were found at ERI/RRT (Elective Replacement Indicator/Recommended Replacement Time) while the time to ERI indicated by the programmer during the previous follow-up was indicating an ERI at a later date.

These eight (8) devices were programmed with high pulse amplitude and width combined with a high percentage of paced events, which explains why they had already reached ERI. The longevity of these devices is conforming to specifications. No permanent injury or death has occurred as a result of the reported events. At the time of the follow-up, pacing functions of the device were maintained in each reported event.

In-depth investigation of these reported events revealed that:

- The calculated residual longevity (*i.e.* the remaining time until the ERI) was overestimated.
- Because of this incorrect information, the follow-up dates might not have been adjusted when nearing the ERI; the ERI or EOL (End of Life) could therefore be reached between two follow-up exams, or during the follow-up exam itself.
- The overall longevity of the devices is not affected and corresponds to what is stated in the instructions for use.

Sorin CRM actions to address the issue

Sorin CRM has taken corrective actions to address this issue. A new programmer software version was developed and made available by the end of November 2013 for Europe and Japan (Smartview 2.40 / Smartview 2.40J), and by the end of March 2014 in the US (Smartview 2.40UG1) to correct the Time to ERI and its presentation through the color-coded gauge.

Patient management recommendations

After consulting with Sorin CRM's independent Product Performance Monitoring Board, Sorin CRM recommends:

- To consider checking the battery impedance of the last follow-up exam. In case the battery impedance is greater than or equal to 3.5k Ω , a follow-up visit must be scheduled within a maximum of 6 months from the last follow-up visit.
- When pacemaker operation is checked by the simple application of a magnet, a magnet rate less than 95 min⁻¹ should trigger a follow-up exam in the pacemaker centre.

- As a general rule, a maximum of 6 month follow-up interval when the battery impedance becomes greater than or equal to $3.5k\Omega$. This recommendation should also be followed subsequent to the installation of the new programmer software version.

New recommendations have been issued. Please refer to section [6.2.5](#).

6.2.5 Improved residual longevity displayed by the programmer – Reply pacemakers

Original date of Field Safety Notice: September 2016

Field Safety Notice description

As of August 31, 2016, the company received thirty-one (31) reports (*i.e.* 0.006%) of overestimation of the displayed residual longevity during use of the current programmer software version⁴⁰. Pacing functions were maintained between follow-ups in all thirty-one (31) reported cases; the RRT⁴¹ was reached between follow-up exams in 14 of these 31 cases (0.003%). No permanent injury or death has occurred as a result of the reported events. In-depth investigation of these reported events revealed that the overall device longevity and battery capacity is unaffected, meeting device specifications. Analysis of these cases and real-time battery depletion tests determined that the root cause was due to greater than expected variability in battery discharge profiles.

The overall longevity of REPLY, ESPRIT, FACIL⁴², REPLY 200, REPLY 250⁴³, KORA 100, KORA 250 and REPLY CRT-P pacemakers is NOT impacted by this change and corresponds to what is stated in the instructions for use.

Company actions to address the issue

The company has taken corrective actions to address this issue. We will release a new programmer software version⁴⁴ to improve the Time to RRT. The new programmer software version displays a more accurate estimated residual longevity, corresponding to a typical battery discharge profile. In addition, when approaching the RRT, it provides a minimal residual longevity estimation to cover the variability in battery characteristics. Also, the residual longevity is re-calculated upon changes in programmed settings during a follow-up session.

Patient management recommendations

After consulting with the company CRM's independent Product Performance Monitoring Board, the company recommends:

⁴⁰ The following versions are concerned:

- SmartView 2.40 to 2.50 in European Community
- SmartView 2.40J to 2.50J in Japan
- SmartView 2.40UG1 (and 2.40UC1) to 2.50UG1 (and 2.50UC1) in US
- SmartView 2.42UG2 in Canada

⁴¹ RRT: Recommended Replacement Time. Formerly described as ERI or Elective Replacement Indicator.

⁴² FACIL pacemakers are only commercialized in Japan.

⁴³ Reply 250 is limited to the AUTOMAAT clinical study.

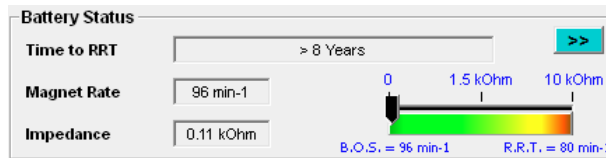
⁴⁴ SmartView 2.54 released in September 2016 in European Community
SmartView 2.54J released in September 2016 in Japan
SmartView 2.52UG1 and 2.52UC1 released in January 2017 in US
SmartView 2.54UG2 released in April 2017 in Canada

#	Recommendation	Applicable to the following patients	Applicable to the following models
1	<p><u>Pending the first pacemaker interrogation with the new programmer software:</u></p> <p>For pacemaker-dependent patients implanted with single or dual chamber pacemaker models, you should consider checking the battery impedance and the residual longevity displayed during the last follow-up exam. Based on these two values, the Annex 2 provides the new recommended follow-up interval.</p>	Pacemaker-dependent patients	All, except Reply CRT-P
2	<p><u>Once the programmer software is upgraded:</u></p> <p>When the minimal estimated residual longevity <u>displayed by the new programmer software version</u> is less than or equal to 12 months:</p> <ol style="list-style-type: none"> We recommend conducting patient follow-up visit at an interval that is between the minimal and the typical residual longevity displayed by the programmer, without exceeding 12 months (i.e. the annual standard follow-up). For pacemaker-dependent patients, we recommend conducting patient follow-up visit at an interval equal to the minimal residual longevity displayed by the programmer. <p>Refer to Annex 1.</p>	<p>2.a: Non pacemaker-dependent patients</p> <hr/> <p>2.b: Pacemaker-dependent patients</p>	All
3	<p>When the residual longevity indicators are not available through the programmer, a maximum of 6 month follow-up interval should be applied when the battery impedance becomes greater than or equal to 3.5 kΩ.</p> <p><i>This recommendation applies now, and remains applicable after the upgrade.</i></p>	All	All
4	<p>When pacemaker operation is checked by the simple application of a magnet: a magnet rate less than 95 min⁻¹ should trigger a follow-up exam in the pacemaker centre, and in any case the follow-up interval should not be greater than 6 months.</p> <p><i>This recommendation applies now, and remains applicable after the upgrade.</i></p>	All	All
5	<p>Annual standard follow-up.</p> <p><i>This recommendation applies now, and remains applicable after the upgrade.</i></p>	All	All
6	<p>The device should be replaced as soon as the RRT point is reached. The RRT is defined as follows:</p> <ul style="list-style-type: none"> 10kΩ (magnet rate of 80min⁻¹) for single and dual chamber pacemaker models 8.5kΩ (magnet rate of 80min⁻¹) for Reply CRT-P <p><i>This recommendation applies now, and remains applicable after the upgrade.</i></p>	All	<p>10kΩ for non CRT-P models</p> <p>8.5kΩ for Reply CRT-P</p>

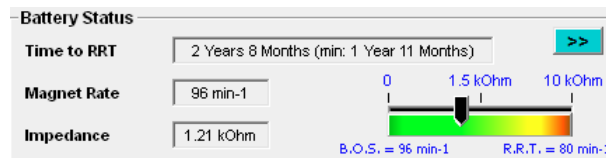
Annex 1

The new programmer software version displays a more accurate estimated residual longevity, corresponding to a typical battery discharge profile. In addition, when approaching the RRT, it provides a minimal residual longevity estimation to cover the variability in battery characteristics. Also, the residual longevity is re-calculated upon changes in programmed settings during a follow-up session. With the new programmer software version, the Time to RRT is displayed as follows:

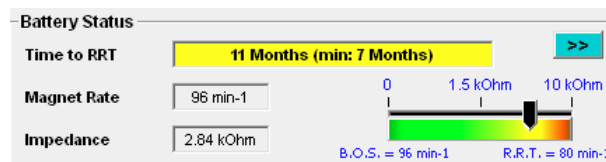
- If the typical estimated time to RRT is >3 years, the “typical time to RRT” is displayed and the corresponding text field background is grey.



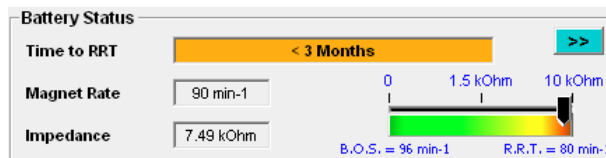
- If the typical and minimal estimated time to RRT are between 3 months and 3 years, the “typical time to RRT in years and months (Minimal time to RRT)” are displayed and:
 - the corresponding text field background is grey, if the minimal estimated time to RRT is >12 months;



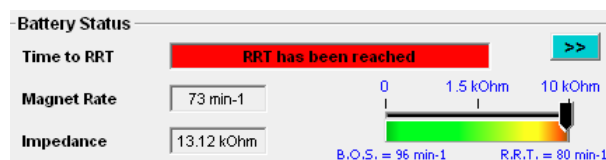
- The corresponding text field background is yellow, if the minimal estimated time to RRT is ≤12 months. A Warning will be displayed “In the current conditions of use, the minimum residual longevity ≤ 12 months.”;



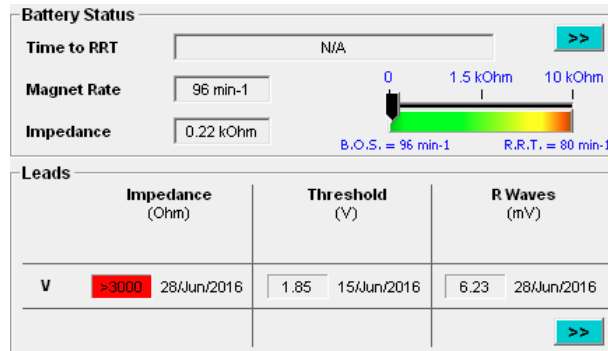
- If the minimal estimated time to RRT is <3 months, “< 3 months” is displayed and the corresponding text field background is orange. A Warning will be displayed: “In the current conditions of use, the minimum residual longevity ≤ 3 months.”



- If the RRT has been reached, “RRT has been reached” is displayed and the corresponding text field background is red.



- “NA” is displayed in the text field, and the corresponding text field background is grey:
 - If less than 5 minutes statistics are available (*i.e.* first interrogation at implant, device reset),
 - If lead impedance is abnormal (< 200 and $\geq 3000 \Omega$) in any of the programmed cavity.



Annex 2

The table in Annex 3 provides the new recommended follow-up interval for pacemaker-dependent patients implanted with single or dual chamber pacemaker models⁴⁵

- REPLY Models D, DR, VDR, SR
- ESPRIT Models D, DR, S, SR
- FACIL Model DR
- REPLY 200 Models DR, SR
- REPLY 250 Model DR⁴⁶
- KORA 100 Models DR, SR
- KORA 250 Models DR, SR

Pending the availability of the new programmer software version: for pacemaker-dependent patients implanted with single or dual chamber pacemaker models, you should consider checking the battery impedance and the residual longevity displayed during the last follow-up exam⁴⁷. Based on these two values, and provided that the settings were not reprogrammed during the last follow-up, the table in Annex 3 provides the new recommended follow-up interval (X months). A follow-up visit must be scheduled within a maximum of X months from the last follow-up visit. During the next follow-up:

- If the battery impedance is greater than or equal to 10 kOhms, the pacemaker should be replaced.
- If the battery impedance is inferior to 10 kOhms:
 - o If your programmer software is not upgraded yet, use the table overleaf to schedule the follow-up interval.
 - o If your programmer software is upgraded⁴⁸: When the minimal estimated residual longevity displayed by the new programmer software version is less than or equal to 12

⁴⁵ This recommendation does not apply to patients implanted with Reply CRT-P model.

⁴⁶ Reply 250 is limited to the AUTOMAAT clinical study.

⁴⁷ If the last follow-up exam was performed with a SmartView version before 2.40 (in Europe); 2.40J (in Japan); 2.40UG1 (in US); 2.42UG2 (in Canada), the Annex 3 cannot be used to schedule the follow-up interval. Contact your company representative.

⁴⁸ To one of the following versions:

- SmartView 2.54 version (or higher) in European Community
- SmartView 2.54J (or higher) in Japan
- SmartView 2.52UG1 and 2.52UC1 (or higher) in US
- SmartView 2.54UG2 (or higher) in Canada

months, we recommend conducting patient follow-up visit at an interval that is between the minimal and the typical residual longevities displayed by the programmer, without exceeding 12 months (i.e. the annual standard follow-up). For pacemaker-dependent patients, we recommend conducting patient follow-up visit at an interval equal to the minimal residual longevity displayed by the programmer.

Annex 3

Recommended follow-up interval (X months)	Battery impedance displayed at last follow-up (kOhms)												
	1.0 kΩ	1.5 kΩ	2.0 kΩ	2.5 kΩ	3.0 kΩ	3.5 kΩ	4.0 kΩ	4.5 kΩ	5.0 kΩ	5.5 kΩ	6.0 kΩ	6.5 kΩ	7.0 kΩ
Time to RRT ⁴⁹ displayed at last follow-up (months)	34 M	12 M	12 M	12 M	12 M	12 M	NA	NA	NA	NA	NA	NA	NA
	33 M	12 M	12 M	12 M	12 M	12 M	NA	NA	NA	NA	NA	NA	NA
	32 M	12 M	12 M	12 M	12 M	12 M	NA	NA	NA	NA	NA	NA	NA
	31 M	12 M	12 M	12 M	12 M	12 M	NA	NA	NA	NA	NA	NA	NA
	30 M	12 M	12 M	12 M	12 M	12 M	NA	NA	NA	NA	NA	NA	NA
	29 M	12 M	12 M	12 M	12 M	12 M	NA	NA	NA	NA	NA	NA	NA
	28 M	12 M	12 M	12 M	12 M	12 M	NA	NA	NA	NA	NA	NA	NA
	27 M	12 M	12 M	12 M	9 M	9 M	NA	NA	NA	NA	NA	NA	NA
	26 M	12 M	12 M	9 M	9 M	9 M	12 M	NA	NA	NA	NA	NA	NA
	25 M	12 M	12 M	9 M	9 M	9 M	9 M	NA	NA	NA	NA	NA	NA
	24 M	12 M	12 M	9 M	9 M	9 M	9 M	NA	NA	NA	NA	NA	NA
	23 M	12 M	9 M	9 M	9 M	9 M	9 M	NA	NA	NA	NA	NA	NA
	22 M	12 M	9 M	9 M	9 M	9 M	9 M	NA	NA	NA	NA	NA	NA
	21 M	12 M	9 M	9 M	6 M	9 M	9 M	NA	NA	NA	NA	NA	NA
	20 M	9 M	9 M	6 M	6 M	6 M	9 M	NA	NA	NA	NA	NA	NA
	19 M	9 M	9 M	6 M	6 M	6 M	6 M	9 M	NA	NA	NA	NA	NA
	18 M	9 M	9 M	6 M	6 M	6 M	6 M	9 M	NA	NA	NA	NA	NA
	17 M	9 M	6 M	6 M	6 M	6 M	6 M	6 M	NA	NA	NA	NA	NA
	16 M	9 M	6 M	6 M	6 M	6 M	6 M	6 M	NA	NA	NA	NA	NA
	15 M	6 M	6 M	6 M	6 M	6 M	6 M	6 M	NA	NA	NA	NA	NA
	14 M	6 M	6 M	6 M	3 M	3 M	6 M	6 M	6 M	NA	NA	NA	NA
	13 M	6 M	6 M	3 M	3 M	3 M	3 M	6 M	6 M	NA	NA	NA	NA
	12 M	6 M	3 M	3 M	3 M	3 M	3 M	6 M	6 M	NA	NA	NA	NA
	11 M	6 M	3 M	3 M	3 M	3 M	3 M	3 M	3 M	6 M	NA	NA	NA
	10 M	3 M	3 M	3 M	3 M	3 M	3 M	3 M	3 M	3 M	NA	NA	NA
	9 M	3 M	3 M	3 M	3 M	3 M	3 M	3 M	3 M	3 M	NA	NA	NA
	8 M	3 M	3 M	3 M	3 M	3 M	3 M	3 M	3 M	3 M	3 M	NA	NA
	7 M	3 M	3 M	ASAP	ASAP	ASAP	ASAP	3 M	3 M	3 M	3 M	NA	NA
	6 M	3 M	ASAP	ASAP	ASAP	ASAP	ASAP	ASAP	3 M	3 M	3 M	ASAP	NA
	5 M	ASAP	ASAP	ASAP	ASAP	ASAP	ASAP	ASAP	ASAP	ASAP	ASAP	ASAP	ASAP
	4 M	ASAP	ASAP	ASAP	ASAP	ASAP	ASAP	ASAP	ASAP	ASAP	ASAP	ASAP	ASAP

- This table should be used for pacemaker-dependent patients implanted with single or dual chamber pacemaker models: REPLY Models D, DR, VDR, SR; ESPRIT Models D, DR, S, SR; FACIL Model DR; REPLY 200 Models DR, SR; REPLY 250 Model DR; KORA 100 Models DR, SR; KORA 250 Models DR, SR;
- This table does not apply to patients implanted with Reply CRT-P model;
- If the last follow-up exam was performed with a SmartView version before 2.40 (in Europe); 2.40J (in Japan); 2.40UG1 (in US); 2.42UG2 (in Canada), this table cannot be used to schedule the follow-up interval. Contact your company representative.
- If some of the following settings were reprogrammed during the last follow-up, this table may not be applicable: pacing mode, pacing amplitude(s), pulse width(s), rate response, sensors, auto-threshold, basic rate. If the reprogramming tends to increase the current consumption (e.g. higher pacing amplitude, longer pulse width etc.), contact your company representative. If the reprogramming tends to decrease the current consumption, it is safe to use the above table.
- NA: Not Applicable. NA indicates that it is not possible that this combination (battery impedance; Time to RRT) was displayed during the last follow-up.
- ASAP: a follow-up should be scheduled without delay. We recommend that this anticipated follow-up take place within 1 month from the previous follow-up visit.

6.2.6 ENO, TEO, OTO and KORA 250: Risk of abnormally short device lifetime

Original date of Field Safety Notice: February 2023

⁴⁹ If the last follow-up exam was performed with a SmartView version before 2.40 (in Europe); 2.40J (in Japan); 2.40UG1 (in US); 2.42UG2 (in Canada), the Annex 3 cannot be used to schedule the follow-up interval. Contact your company representative.

Field Safety Notice description

This Field Safety Notice was issued in relation to six confirmed complaints associated to abnormal battery impedance increase, out of approximately 305959 devices MicroPort CRM ENO SR / ENO DR / TEO SR / TEO DR / OTO SR / OTO DR / KORA 250 SR / KORA 250 DR pacemakers distributed worldwide. The observed issue is an abnormal increase of the battery impedance during the first months following the pacemaker implantation that may indicate premature device depletion.

How does this affect patients?

No bodily injury or death has been reported as a result of the confirmed malfunction. Nevertheless, the abnormal battery impedance increase could induce a premature replacement of the device.

Patient management recommendations

MicroPort CRM provided the following recommendations which have been updated based on the PostMarket data and the investigations. Therefore, the new recommendations are applied to all patients, even those already reviewed through the initial Field Safety Notice as follows:

A device replacement should be considered, for all the impacted devices, depending on the patient's health conditions as follows:

- For patients at higher risk in case of premature end of service of the device (pacing dependent patients included):
 - We recommend a pacemaker replacement as soon as possible, whatever the battery status.
- For patients at lower risk:
 - If the battery impedance value is lower than 1k Ω , we recommend a pacemaker replacement within 2-3 months.
 - If the battery impedance value is greater than or equal to 1k Ω , we recommend a pacemaker replacement as soon as possible.

6.3 Leads

6.3.1 Isoline 2CR6 defibrillation leads - incorrect Use Before Date

Original date of Field Safety Notice: October 2011

Field Safety Notice description

This Field Safety Notice was issued in relation to 32 Isoline 2CR6 defibrillation leads that had been labeled with an incorrect and extended Use Before Date ("UBD"). A batch of Isoline leads had been labeled with an incorrect UBD that was greater than the maximum 36-month shelf-life specified for this product. As labeled, the shelf-life period had been incorrectly indicated as 43 months. Review of manufacturing records associated to this batch identified that the date printed on the labels was 5 May 2013, while the correct UBD of 21 September 2012 should have been indicated.

The in-depth investigation revealed that the error resulted from a labeling software anomaly. Corrective actions were implemented at the manufacturing level to avoid recurrence of such an anomaly.

Patient recommendations

The company pro-actively performed this Field Safety Notice in order to account for all of the affected leads:

- For leads that had already been implanted, the date of implant was requested; no other action was required relative to implanted leads, since such leads had been implanted prior to the correct UBD.
- For leads remaining in local inventory, instructions were given to return the leads to a Sorin representative.

6.3.2 Isoline defibrillation leads, models 2CR5, 2CR6 and 2CT6 - internal insulation breach

Original date of Field Safety Notice: January 2013

Field Safety Notice description

As of December 31, 2012, 30 cases of internal insulation breach under the RV or SVC defibrillation coil, out of 13500 units implanted worldwide (0.222%), had been confirmed by the analysis conducted on returned products. In each of the 30 identified cases, the internal insulation breach of the silicone lumen was observed under the RV and/or SVC defibrillation coil, *i.e.* where the microcables were not coated with ETFE⁵⁰, resulting in a contact between the conductors, thus leading to low pacing impedance and/or ventricular oversensing, and/or inappropriate therapy. It should be noted that in case of ventricular oversensing, pacing was inhibited.

These leads had been implanted for a mean duration of 1.4 years (from 2 months to 4.5 years). No early indicator that could have warned of a potential issue was identified in those cases. Visual inspection of each of the 30 returned products revealed presence of unusual torsion and/or compression. In depth investigation determined that the insulation abrasion by the microcable of the Isoline lead models under the RV or SVC defibrillation electrode may be attributed to particular and rare implant conditions that induce bending, compression and/or torsion on the lead, thus promoting internal abrasion of the silicone lumen by pushing the microcable against the lumen wall. However, such torsion and/or compression are barely detectable through X-ray imaging. The insulation breach itself is not visible through X-ray imaging because of its position under the defibrillation coil. No conductor

⁵⁰ Ethylene tetrafluoroethylene (fluorine based plastic)

externalization was observed and no conductor externalization was possible since the conductor wires are secured within the lead by the defibrillation coil itself.

No permanent serious injury or death was reported as a result of the confirmed malfunction.

Details about potentially affected leads

This information affects Isoline defibrillation leads, models 2CR5, 2CR6 and 2CT6⁵¹. The 2CR5 and 2CR6 models have a retractable screw fixation mechanism while the 2CT6 model has tined fixation.

Isoline leads are integrated bipolar leads with two defibrillation coils. The lead body contains three conductors, which are encased by a multi-lumen silicone tube: one pacing/sensing conductor and two defibrillation microcables. Both microcables are protected with an ETFE polymer coating, except under each defibrillation coil.

Patient management recommendations

Sorin CRM recommended to discontinue implantation of Isoline leads and provided the following recommendations for management of patients implanted with Isoline leads:

- Leads which are not implanted yet, shall not be used and should be returned to Sorin CRM.
- Prophylactic replacement or removal of any Isoline lead was not recommended in patients whose Isoline lead has not shown any electrical malfunction, considering the low occurrence rate of the issue. In such cases of absence of electrical malfunction evidence, standard follow-up intervals should be applied (3-month intervals, as recommended in the Sorin ICD labeling); reprogramming of VT/VF detection parameters could be evaluated (such as extending the persistence⁵²); however, this should be weighed against delaying appropriate therapy. At the next routine follow-up, patients should be informed to contact their physician should they experience shock therapy.
- Physicians were encouraged to regularly monitor their patients implanted with Isoline leads, as recommended in the HRS/EHRA expert consensus on the monitoring of Cardiovascular Implantable Electronic Devices⁵³, including battery voltage, pacing & sensing operation, lead impedances, arrhythmias detected by the device, etc. Careful review of recorded treated and non-treated episo-des was also recommended.
- In case of evidence of a lead issue, physicians were encouraged to consider replacing the lead, while weighing the risks and benefits of extracting the lead compared to capping it and leaving it in place. The decision to remove a lead should be taken on an individual basis, as described in HRS guidelines⁵⁴. Any event associated to a potentially defective Isoline lead should be reported to Sorin CRM, and any extracted lead should be returned to Sorin CRM for analysis.
- When the Isoline lead is connected to a remote monitoring enabled ICD or CRT-D device, physicians were obliged to consider appropriate alert parameter(s) programming. For the Paradym RF family, the following recommendations relative to programming of alerts were provided :
 - o RF communication to "ON"
 - o Alerts to "ON"

⁵¹ Since the commercial release in 2005, these leads had been manufactured in France or in Italy by "ELA Medical" or "Sorin CRM". Although the manufacturer name changed over time (from ELA Medical to Sorin CRM), the commercial name of the product remained "Isoline".

⁵² Refer to pulse generator IFUs, for non Sorin ICD's manufacturer

⁵³ HRS/EHRA Expert Consensus on the Monitoring of Cardiovascular Implantable Electronic Devices (CIEDs): Description of Techniques, Indications, Personnel, Frequency and Ethical Considerations - Bruce L. Wilkoff & al. – Europace 2008;10:707-25

⁵⁴ Transvenous Lead Extraction: Heart Rhythm Society Expert Consensus on Facilities, Training, Indications, and Patient Management - Bruce L. Wilkoff and al. Heart Rhythm July 2009; 6 :7 : 1085-1104

6.3 Leads

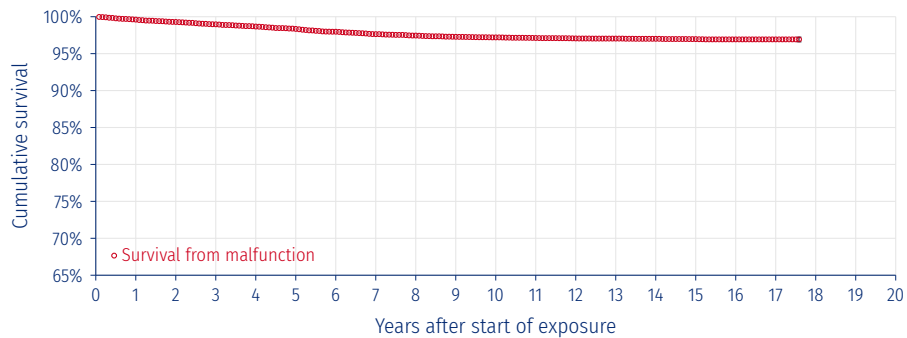
[« Go back to Table of Contents](#)

Type of Alerts	Parameter	Programmable value
Clinical Alerts	V oversensing	ON
Tachy Therapy Alerts	Shock delivered	All shocks
Leads Alerts	Abnormal RV lead impedance	ON Low Limit: 200 Ohm

- At the time of the device replacement, a remote enabled ICD or CRT-D should be considered.

Isoline 2CR5 - 2CR6 - 2CT6

Isoline 2CR5
Isoline 2CR6
Isoline 2CT6



Cutoff date	30-Jun-2025	Worldwide implants	13446	Worldwide malfunctions	351
Market release date	Dec-2005	Estimated active implants	10322	- Devices with compromised therapy	277
Analysis stopped at 211 months due to < 50 exposed devices				- Devices without compromised therapy	74

Cumulative survival from malfunction with 95% confidence interval, as a function of years after implant																				
Years after implant	1	2	3	4	5	6	7	8	9	10	11	12	13	14	15	16	17	18	19	20
Cumulative survival from malfunction in %	99.61	99.29	98.97	98.67	98.35	97.97	97.64	97.45	97.28	97.2	97.12	97.06	97.04	97.01	96.97	96.93	96.93			
Upper confidence interval (+) in %	0.09	0.13	0.16	0.19	0.21	0.24	0.26	0.27	0.28	0.29	0.29	0.29	0.29	0.3	0.3	0.3	0.3			
Lower confidence interval (-) in %	0.12	0.16	0.2	0.22	0.24	0.27	0.29	0.3	0.31	0.32	0.32	0.32	0.33	0.33	0.33	0.33	0.33			

Lead malfunctions	Lead malfunctions		Lead complications		Acute lead complications	Chronic lead complications
	Without compromised therapy	With compromised therapy	Without compromised therapy	With compromised therapy		
Conductor Fracture	0	10	Abnormal Defibrillation Impedance		1	24
Crimps, Welds, and Bonds	0	1	Abnormal Pacing Impedance		0	12
Insulation Breach	1	74	Cardiac Perforation		0	1
Other	0	0	Conductor Fracture		0	5
All lead malfunctions	1	85	Extracardiac Stimulation		0	0
			Failure to Capture		2	15
			Failure to Sense (undersensing)		1	2
			Insulation Breach		0	3
			Lead Dislodgement		7	5
			Other		0	0
			Oversensing		5	200
			All lead complications		16	267

Note: the above survival curve only accounts for Lead malfunctions and Chronic lead complications; it does not include Acute lead complications, in accordance with the international standard ISO 5841-2.

6.3.3 SonRtip endocardial pacing leads - Lead handling

Original date of Field Safety Notice: February 2012

Field Safety Notice description

This Field Safety Notice was issued as a preventative action to ensure the safe and effective use of the SonRtip endocardial pacing lead with contractility sensor. This lead is an active fixation atrial lead with a fixed helix. This fixed helix is protected by a PEG coating (sugar coating) to prevent damage while advancing the lead through the patient’s venous anatomy.

As part of Sorin CRM’s post-market surveillance system, two reports were received where part or all of the fixation helix of the SonRtip lead remained in the myocardium after the lead had been removed. No permanent injury or death occurred as a result of these issues. The investigation of both reports tends to demonstrate that an excessive number of turns was applied to the lead during fixation.

The SonRtip lead does not include an extendable-retractable fixation mechanism, usually associated with a large number of turns during its fixation. On the contrary, the SonRtip lead has a fixed helix. Its fixation in the myocardium is achieved by applying 4 (maximum 6) clockwise turns to the lead. Excessive turns may cause damage to the fixation helix and/or to the lead body.

Recommendations

Sorin CRM pro-actively communicated to physicians involved in SonRtip lead implantations about the importance of following the instructions for use, and specifically, communicated the number of turns to be applied to fixate the helix in the myocardium. Furthermore, it was advised that all recommendations and warnings included in the Implant Manual be followed and respected.

6.3.4 XFine passive pacing leads - Risk of Minute Ventilation artefact oversensing

Original date of Field Safety Notice: August 2022

Field Safety Notice description

This Field Safety Notice was issued regarding a subset of XFine leads (models XFine TX25D, XFine TX26D, XFine JX24D; XFine JX25D) that may be at risk of high polarization and could lead to Minute Ventilation (MV) oversensing under very specific programming conditions when connected to ALIZEA or BOREA pacemakers (models ALIZEA DR 1600, ALIZEA SR model 1300, BOREA DR model 1500, BOREA SR model 1200).

As of July 25th, 2022, MicroPort CRM has confirmed 7 complaints on MV oversensing out of approximately 22 000 MicroPort CRM XFine leads distributed worldwide. Extensive analysis performed has revealed that the involved XFine leads suffered from abnormal high polarization at the lead tip. High polarization leads may produce sensing artefacts with MV, potentially leading to oversensing when connected with ALIZEA / BOREA pacemakers.

- In the case of a single chamber device connected to a high polarization lead, MV oversensing may (depending on the programmed sensitivity) lead to inappropriate inhibition of pacing.
- In the case of a dual chamber device connected to a high polarization lead implanted in the atrium, MV oversensing may (depending on the programmed sensitivity) lead to in the atrium inappropriate Mode Switching.

Recommendations

MicroPort CRM provided the following recommendations:

- **Potentially impacted XFine leads that are not implanted yet, shall not be used in combination** of ALIZEA or BOREA pacemakers.
- **For patients implanted with potentially impacted XFine leads connected to ALIZEA or BOREA pacemakers:**
 1. For pacemaker dependent patients implanted with an SR system, we recommend a prompt pacemaker dependent patients implanted with an SR system in-clinic patient follow-up to DISABLE MV. If rate response is required choose “Sensor = G”.
 2. For non-pacemaker dependent patients implanted with an SR system:
Check remotely or during in clinic patient follow-up for the presence of inappropriate pacing inhibition (oversensing of MV artefacts). If there is evidence of MV oversensing we recommend an in-clinic patient follow-up to:
 - Consider reprogramming the sensitivity :
 - If the “Autosensing” value is set as “Auto”, first change the Autosensing value to “Monitor”;

- Then change the sensitivity to a higher (less sensitive) value and keep the “Autosensing” value set to “Monitor”.
 - Alternatively, you may consider switching OFF the MV sensor. In the latter case, if rate response is required choose “Sensor = G”.
3. For DR patients with a potentially impacted XFine lead implanted in the atrium: If MV configuration is activated and set to “A Bipolar” (either for rate response and/or for Sleep Apnea Monitoring), check for the eventual presence of inappropriate Mode Switching either through remote follow-up or during an in-clinic follow-up. In case there is evidence of MV oversensing we recommend an in-clinic patient follow-up to:
- Consider reprogramming the atrial “Sensitivity”:
 - If the atrial “Autosensing” value is set as “Auto”, first change the atrial “Autosensing” value to “Monitor”;
 - Then change the atrial “Sensitivity” to a higher (less sensitive) value and keep the atrial “Autosensing” value set to “Monitor”.
 - Alternatively, you may consider to switch OFF the MV sensor. In the latter case, if rate response is required choose “Sensor = G”
- **In the case of a required pacemaker replacement with ALIZEA / BOREA devices with potentially impacted XFine leads, same recommendations apply.**

Update of the Field Safety Notice, sent in April 2024

MicroPort CRM has obtained the regulatory approval of a new software version to provide additional solutions on ALIZEA / BOREA pacemakers to facilitate the management of the patients who are implanted with XFine leads listed in the Field Safety Notice CRM-SAL-2022-001 released in August 2022.

As of January 25th, 2024, MicroPort CRM has received 10 complaints from HealthCare Professionals on MV oversensing out of approximately 22 000 MicroPort CRM XFine leads distributed worldwide. Extensive analysis performed has revealed that the involved XFine leads suffered from abnormal high polarization at the lead tip. No permanent serious injury or death has been reported.

The risk of Minute Ventilation artefact oversensing is associated with a limited number of XFine leads manufactured before November 2021. Manufacturing changes have been implemented, eliminating the risk of production of high polarization leads.

How does the new software improve the management of the patients affected by the issue?

In the presence of oversensing of MV artefacts:

- the MV oversensing alert is displayed in the programmer and is sent through the remote monitoring system when available;
- the MV sensor will be switched OFF if MV oversensing occurred in the ventricle (the new software does not influence usage of the G sensor).

Patient management recommendations

MicroPort CRM provides the following recommendation:

Your programmer shall be upgraded with the new programmer software version SmartView version 3.16 (and higher).

All ALIZEA and BOREA devices interrogated with this new version will then be automatically upgraded during the next scheduled in-clinic follow-up. Your MicroPort CRM representative will assist you in upgrading your programmer.

As long as ALIZEA and BOREA devices have not been interrogated with this new programmer software version, previous recommendations listed in the CRM-SAL-2022-001 communication apply (cf. Addendum #1 of the field safety notice).

7 Retired Products

Models that are listed below have reached the 20 year mark and are no longer distributed. As a result, these models have been removed from the current PPR. The table below lists all the retired products and the corresponding PPR where they were last reported.

Models	Last PPR Reported
Alto 2 MSP 627	2nd Edition 2023
Rhapsody S 2130, Rhapsody SR 2210, Rhapsody D 2410, Rhapsody DR 2510, Rhapsody+ DR 2530, Sole VDR, Symphony D 2450, Symphony VDR 2350, Neway D, Neway SR, Neway VDR	1st Edition 2023
Neway DR, Talent 3 VDR 263, Sole SR, Symphony SR 2250, Alto 2 VR 625, Alto 2 DR 624, Talent 3 DR 253, Talent 3 MSP 353, Talent MSP AF 343, Talent MSP 313	2nd Edition 2022
Alto MSP 617, Situs OTW UW28D, Alto VR 615, Sole DR, Symphony DR 2550	1st Edition 2022
Stelix II BRF24D, Stelix II BRF25D, Stelix II BRF26D, Talent II SR 133, Alto DR 614	Nov 2021
Elect DR, Elect DRM, Elect SR, Elect SRC, Elect VDR, Talent AF 243, Stelid II BRF24D, Stelid II BRF25D, Elect D	May 2021
Situs LV UL28D, Stelid II UTF26D, Hepta 4B, Diapason, Diapason C, Elect XS, Elect XS C, Elect XS Plus, Elect XS Plus C, Situs LV UC28D, Swift 1CT 4041	May 2020
MiniBest, Talent II DR 233	Nov 2020
Stelid II BTF25D, Stelid II BTF26D	Nov 2019
Stelix BR45D, Stelix BR46D, Brio D 220	May 2019
Brio SR 112, Talent SR 113, Talent D 210, Brio DR 212, Brio DR 222	May 2018
Stelid BS45D, Stelid BS46D, Talent DR 213, S 200 AB, S 80 JB, S 80 TB, S 80 UTS, Stelid BT45D	Nov 2017



QUALITY ASSURANCE

SORIN CRM SAS
4 AVENUE RÉAUMUR
92140 CLAMART
FRANCE

www.crm.microport.com

© MICROPORT CRM S.R.L.